

RESEARCH ARTICLE

Open Access



Identification of transcription factors interacting with a 1274 bp promoter of MaPIP1;1 which confers high-level gene expression and drought stress Inducibility in transgenic *Arabidopsis thaliana*

Yi Xu¹, Zhiqiang Jin², Biyu Xu², Jingyang Li¹, Yujia Li¹, Xiaoyi Wang¹, Anbang Wang¹, Wei Hu², Dongmei Huang¹, Qing Wei¹, Zhuye Xu³ and Shun Song^{1*}

Abstract

Background: Drought stress can severely affect plant growth and crop yield. The cloning and identification of drought-inducible promoters would be of value for genetically-based strategies to improve resistance of crops to drought.

Results: Previous studies showed that the MaPIP1;1 gene encoding an aquaporin is involved in the plant drought stress response. In this study, the promoter pMaPIP1;1, which lies 1362 bp upstream of the MaPIP1;1 transcriptional initiation site, was isolated from the banana genome. And the transcription start site(A) is 47 bp before the ATG. To functionally validate the promoter, various lengths of pMaPIP1;1 were deleted and fused to GUS to generate pMaPIP1;1::GUS fusion constructs that were then transformed into *Arabidopsis* to generate four transformants termed M-P1, M-P2, M-P3 and M-P4. Mannitol treatment was used to simulate drought conditions. All four transformants reacted well to mannitol treatment. M-P2 (– 1274 bp to – 1) showed the highest transcriptional activity among all transgenic *Arabidopsis* tissues, indicating that M-P2 was the core region of pMaPIP1;1. This region of the promoter also confers high levels of gene expression in response to mannitol treatment. Using M-P2 as a yeast one-hybrid bait, 23 different transcription factors or genes that interacted with MaPIP1;1 were screened. In an dual luciferase assay for complementarity verification, the transcription factor MADS3 positively regulated MaPIP1;1 transcription when combined with the banana promoter. qRT-PCR showed that MADS3 expression was similar in banana leaves and roots under drought stress. In banana plants grown in 45% soil moisture to mimic drought stress, MaPIP1;1 expression was maximized, which further demonstrated that the MADS3 transcription factor can synergize with MaPIP1;1.

(Continued on next page)

* Correspondence: 13976120411@163.com

¹Key Laboratory of Genetic Improvement of Bananas, Haikou Experimental Station, Chinese Academy of Tropical Agricultural Sciences, Haikou, China
Full list of author information is available at the end of the article



© The Author(s). 2020 **Open Access** This article is licensed under a Creative Commons Attribution 4.0 International License, which permits use, sharing, adaptation, distribution and reproduction in any medium or format, as long as you give appropriate credit to the original author(s) and the source, provide a link to the Creative Commons licence, and indicate if changes were made. The images or other third party material in this article are included in the article's Creative Commons licence, unless indicated otherwise in a credit line to the material. If material is not included in the article's Creative Commons licence and your intended use is not permitted by statutory regulation or exceeds the permitted use, you will need to obtain permission directly from the copyright holder. To view a copy of this licence, visit <http://creativecommons.org/licenses/by/4.0/>. The Creative Commons Public Domain Dedication waiver (<http://creativecommons.org/publicdomain/zero/1.0/>) applies to the data made available in this article, unless otherwise stated in a credit line to the data.

(Continued from previous page)

Conclusions: Together our results revealed that MaPIP1;1 mediates molecular mechanisms associated with drought responses in banana, and will expand our understanding of how AQP gene expression is regulated. The findings lay a foundation for genetic improvement of banana drought resistance.

Keywords: Aquaporin, Promoter, Drought stress, 5' deletion, Banana, Transcription factor

Background

Water is essential for plant growth and development [1]. Abiotic stress such as drought can affect plant growth, leading to major losses in plant production worldwide [2], and is a growing problem in agriculture [3–6]. All forms of water transport including drought adjustment, single cell expansion and long distance transport require movement of water through the cell membrane [7]. Plant aquaporins (AQPs) allow water influx and efflux to enhance water permeability in vacuolar and plasma membranes [8, 9]. AQPs play an important role in the physiology of water balance and promote efficient water use [10–14]. Water homeostasis is fundamental for cell survival. Transport of water across cellular membranes is governed by AQPs—tetrameric integral membrane channels that are highly conserved throughout the eukaryotic kingdoms [15]. In eukaryotes, it allows water flow across cellular membranes to be tightly regulated in response to various external and internal signals, thereby maintaining the desired water balance of the organism [16]. Fast regulation can be achieved by two means—either by altering the water permeability rate through the pore itself (gating) or by rapidly changing the abundance of AQP molecules in the plasma membrane by shuttling the protein between the plasma membrane and intracellular vesicles, so-called trafficking [17].

AQPs are transmembrane proteins, which form channels in intracellular and plasma membranes to facilitate rapid movement of water in either direction [18]. In order to transport water, some major intrinsic protein (MIP) family members can also transport glycerol, CO₂, urea, ammonia, hydrogen peroxide, boron, silicon, arsenite, antimonite, lactic acid [19, 20] and O₂ [21].

The large and highly diverse family of plant AQPs can be divided into 8 sub-families: plasma membrane intrinsic proteins (PIPs), tonoplast intrinsic proteins (TIPs), nodulin 26-like intrinsic proteins (NIPs), small basic intrinsic proteins (SIPs), GlpF-like intrinsic proteins (GIPs), hybrid intrinsic proteins (HIPs), uncategorized members designated X intrinsic proteins (XIPs), and large intrinsic proteins (LIPs) [22, 23]. Together these sub-families are involved in plant growth and development processes such as seed germination and fruit ripening, as well as cell elongation [24]. Moreover, AQPs play a central role in maintaining water homeostasis in plant responses to environmental stress [18, 25]. In

recent years, AQPs have gained increasing interest for studies to understand how plants respond to abiotic stress. Many experimental results indicate that plants regulate AQP activity to respond to various abiotic stresses such as cold damage, salt damage, mechanical damage, drought stress, and heavy metal stress. In particular, AQPs play crucial roles in the response of plants to drought stress as evidenced by studies showing that overexpression of some AQP family genes in plants increases the tolerance of transgenic plants to drought stress [24–27]. For example, TaAQP7 overexpression increases tolerance of transgenic tobacco to drought stress [27]. Transformation of Arabidopsis with wheat TaTIP2;2 increased the tolerance of the resulting transgenic plants to drought stress [28]. In bananas, transgenic AQP genes can also improve drought resistance. Banana plants overexpressing MusaPIP1;2 showed significantly enhanced drought resistance compared to control plants [29]. In a study by Sreedharan, transgenic banana plants transformed with MusaPIP1;2 had more robust recovery after rehydration following drought treatment relative to wild type plants. Comparison of physiological and biochemical indices of transgenic and wild type plants showed that MusaPIP1;2-transformed plants had increased amounts of malondialdehyde with decreased proline and relative water content, indicating that the transgenic plants had enhanced ability to induce drought adjustments that translated to better drought resistance. Similarly, Arabidopsis transgenic for MaPIP1;1 also showed improved plant drought resistance [30].

Despite these findings, the molecular mechanisms that govern drought tolerance remain unclear. Abiotic stresses such as drought significantly affect plant growth and development as well as metabolism [31, 32]. Plants have multiple pathways to adapt rapidly to multiple stresses that promote survival under drought stress. A series of functional proteins are important for these response mechanisms such as molecular chaperones, osmoregulatory proteins, channel proteins, transport proteins, protective proteins and detoxification proteins. The expression of these functional proteins is controlled by specific transcription factors that interact with cis-acting elements to induce expression of specific genes in response to drought stress. Gene expression is quantitatively regulated by specific promoters that can contain multiple cis-regulatory elements [33]. Interactions

between cis-elements and transcription factors (TFs) have a key role in activating or suppressing expression of target genes by coordinated regulation of transcription [34, 35]. At present, few promoters that can be used for genetic improvement of crop plants have been described. The most common type of promoter in plants is the 35S promoter CaMV35S, which can drive high levels of gene expression in dicots, whereas the maize ubiquitin promoter drives gene expression in monocots. These promoters are capable of driving high levels of transgene expression in markers or monocots in almost all tissues and developmental stages [36–38]. Inducible or tissue-specific promoters modulate target gene expression under particular conditions or in certain tissues. To date, some tissue-specific and stress-inducible promoters have been reported for plants. For example, the rd29A and rd29B promoters in *Arabidopsis* respond to high salinity and drought [39]. In wheat, the Dreb2 promoter responds to drought stress [40]. The BjSOS2 gene promoter from mustard plant functions in response to high salt, drought and abiotic stresses as well as other forms of stress [5]. The durum wheat gene TdPIP2;1 and its promoter region are in response to abiotic stress in rice [41].

In this study, the promoter for the MaPIP1;1 gene was cloned, we divided the promoter into four parts, M-P1-M-P4, and transformed it into *Arabidopsis thaliana*. GUS staining and GUS inactivity assay showed that M-P2 is the core region of the promoter. A yeast one-hybrid method was used to identify transcription factors that directly regulate the MaPIP1;1 promoter, and molecular mechanisms by which target transcription factors modulate MaPIP1;1 expression. According to the cis-acting element, a 5' deletion mutant of the promoter was used to determine the core region, and as bait in a yeast single-hybrid assay to identify 23 different transcription factors or genes that interact with MaPIP1;1. The transcription factor MADS3 was selected based on its binding results in an dual luciferase assay. Under 45% soil moisture to induce drought stress, MaPIP1;1 expression was maximized, thus demonstrating that MADS3 transcription factor cooperated with MaPIP1;1. Taken together, the results of this study revealed that MaPIP1;1 mediates the molecular regulation mechanism of drought stress responses in bananas, and will expand our understanding of how AQP gene expression is regulated in bananas exposed to drought stress. The findings lay a foundation for design of genetic modifications to improve banana drought resistance.

Results

Identification of MaPIP1;1 promoter and cis-acting element analysis

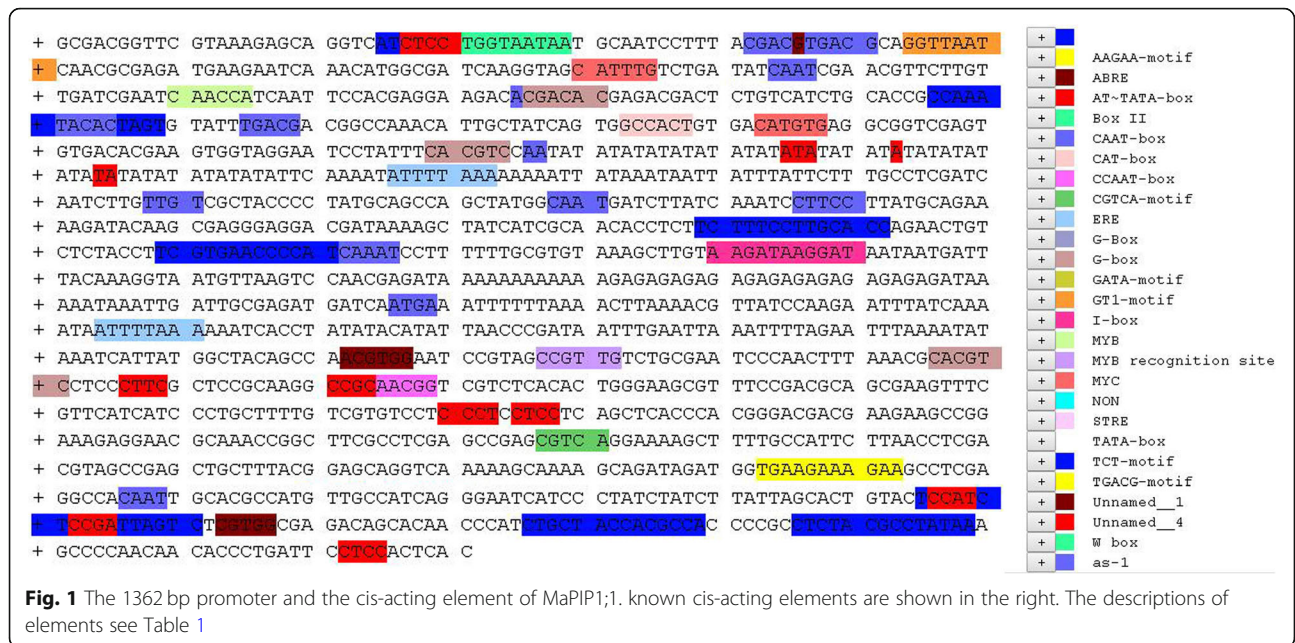
The MaPIP1;1 promoter sequence was obtained from the banana A genome website (<http://banana-genome.cirad.fr>) and a specific primer was designed to amplify a 1362 bp fragment surrounding the promoter (Table 1), which is upstream of the MaPIP1;1 transcriptional initiation site. And the transcription start site(A) is 47 bp before the ATG. Analysis of the promoter sequence for putative cis-acting elements using PlantCARE and PLACE databases showed that this fragment contained multiple TATA-box and CAAT-box core cis-acting elements, an abscisic acid responsive element (ABRE), MYB element (CAACCA), two types of MYC elements (CATGTG and CATTTG), an ERE element (ATTT-TAAA), MYB recognition site (CCGTTG), an AAGAA motif (TGAAGAAAGAA), a MYBHv1 binding site (CCAAT box), two types of MeJA (methyl jasmonate) responsive elements (TGACG-motif and CGTCA-motif), four types of light responsive elements (Box II, G-box, GT1-motif, I-BOX), a meristem responsive element (CAT-box), CCAAT box (CAACGG), MYB recognition site (CCGTTG), and an unknown element (CGTGA) (Fig. 1). Although MaPIP1;1 was induced by mannitol treatment, the pMaPIP1;1 sequence lacked known drought stress-inducible cis-acting elements.

Activity of MaPIP1;1 promoter deletion mutants in transgenic *Arabidopsis thaliana*

To characterize the MaPIP1;1 promoter containing sequences that are critical for drought stress responses, four fragments containing segments of the promoter region, termed M-P1, M-P2, M-P3, M-P4 that were 1362 bp, 1274 bp, 813 bp, 223 bp, respectively, were replaced 35S promoter of the pCAMBIA 1304 vector separately transformed into *Arabidopsis thaliana*. At least three independent T3 transgenic *Arabidopsis* lines were established for each deleted promoter construct to determine the promoter activity. GUS enzyme activity assays showed that M-P1 and M-P2 had higher activity than did M-P3 and M-P4. The GUS activity of M-P2 was up to 60 pmol 4MU/ μ g protein/min, which was 0.57-fold higher than the control, and 1.88 and 2.22 fold higher than that for the M-P3 and M-P4 fragments, respectively (Fig. 2c). And the GUS staining were consistent with the GUS enzyme activity, showed that M-P1-M-P4 could all drive GUS expression, but their promoter activities differed in transgenic *Arabidopsis thaliana*, we can clearly observe that M-P2 has the deepest root staining (Fig. 2a). These results indicate that M-P2 (– 1274 to – 1) is the core region of the MaPIP1;1 promoter, which contains many core region components as well as a CAAT-box and TATA-box.

Table 1 Known cis-acting elements in the pMaPIP1;1 using the PlantCARE and PLACE databases

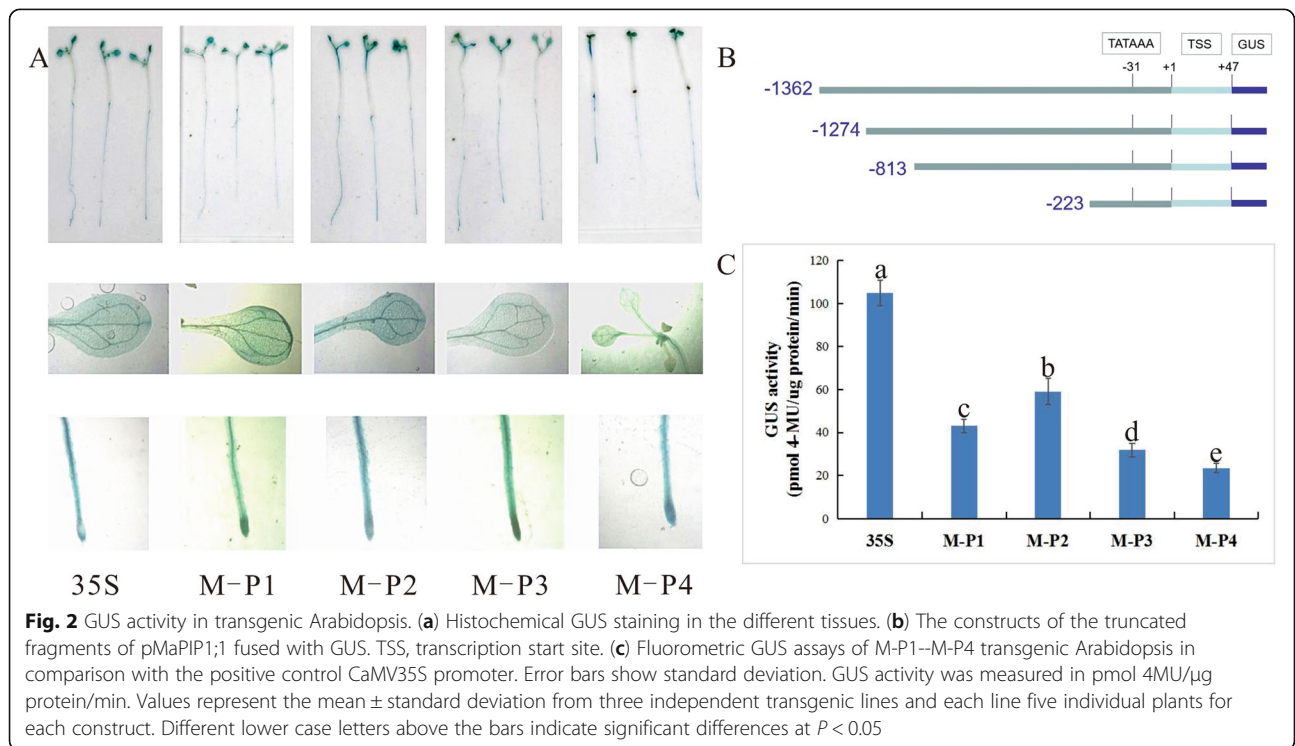
No	TFBs ^a	Function of the motif	Organism	Sequence	Matrix score	Position
1	AAGAA-motif	LRE	Avena sativa	GAAAGAA/ gGTAAAGAA A	10/7	1172,1178
2	ABRE	Abscisic acid responsiveness	Arabidopsis thaliana	ACGTG	5	55,863
3	AT~TATA-box	LRE	Arabidopsis thaliana	TATATA	6	319,343,331,355,327,353,339,363,323,347,335,359,329,351,341,321,345,333,325,337,357,349,361
4	Box II	light responsive element	Solanum tuberosum	TGGTAATAA	9	32
5	CAAT-box	Core promoter	Nicotiana glutinosa/Arabidopsis thaliana/Pisum sativum	CAAT	5/4	43,459,315,316,125,583,1197,208,725,421,471,158
6	CAT-box	meristem expression	Arabidopsis thaliana	GCCACT	6	254
7	CCAAT-box	MYBHv1 binding site	Hordeum vulgare	CAACGG	6	935
8	CGTCA-motif	MeJA-responsiveness	Hordeum vulgare	CGTCA	5	1088
9	ERE		Nicotiana glutinosa	ATTTTAAA	8	377, 775
11	GT1-motif	light responsive element	Avena sativa	GGTTAAT	7	65
12	I-box	light responsive element	Triticum aestivum/ Gossypium hirsutum	AAGATAAGG CT/AGATAAG G	10/8	611,612
13	MYB	SRE ^d	Arabidopsis thaliana	CAACCA	6	151
14	MYB recognition site	SRE ^d	Arabidopsis thaliana	CCGTTG	6	878
15	MYC	SRE ^d	Arabidopsis thaliana	CATTG/CAT GTG	6	111,264
16	TATA-box	Core promoter element	Brassica napus/ Arabidopsis thaliana	ATATAT/TATA TA/taTATAA Atc/ATTATA	6	318,326,323,320,328,324,332,319,327,322,321,325,330,329,333,334,335,336,343,344,345,346,347,348,349,350,351,352,353,354,355,356,357,358,359,363,364,365,389,391,837,838
17	TGACG-motif	MeJA-responsiveness	Hordeum vulgare	TGACG	5	58,226
18	Unnamed__1	unknown	Zea mays	CGTGG	5	864,1274
19	Unnamed__4	unknown	Petroselinum hortense	CTCC	4	28,1016,1009,1353,913,1255,1013,1261,922
20	as-1	LRE	Arabidopsis thaliana	TGACG	5	58,226



Drought stress responses mediated by four deletion mutants of the MaPIP1;1 promoter in transgenic Arabidopsis thaliana

To further investigate the regulatory mechanism of MaPIP1;1-mediated response to drought stress, transgenic 15 day-old *Arabidopsis thaliana* seedlings transformed with the deletion mutants or CaMV35S

promoter as a control were treated with 100 mM, 200 mM or 300 mM mannitol. The GUS enzyme activity was more accurately determine the difference in GUS expression between the fragments under drought stress. Compared with the control, the GUS enzyme activity of each fragment in M-P1-M-P4 increased with increasing concentrations of mannitol. Plants transgenic for M-P2



(-1274 to -1) showed higher enzymatic activity. At 300 mM mannitol, the GUS enzyme activity for M-P2 was 89 pmol 4MU/μg protein/min, the control is 1.48-fold higher than that. This result indicates that functional elements related to drought stress may be contained between M-P2 and M-P3. The enzymatic activity in CaMV35S transgenic *Arabidopsis thaliana* was stable at each treatment concentration. The ratio of M-P2 and CaMV35S at 300 mM mannitol was higher than that at 0 mM mannitol, suggesting that M-P2 (-1274 to -1) can drive high levels of gene expression and drought stress induction (Fig. 3b, d, f). The GUS staining due to the promoter was detected separately from the leaves and roots. Under different concentrations of mannitol, GUS staining in the leaves of transgenic plants was either absent or faint in plants carrying M-P1-M-P4, but was present in the CaMV35S control plant leaves. In roots of the transgenic plants, the apical region was darker. Similar to the GUS enzyme activity results, the transgenic *Arabidopsis thaliana* carrying M-P2, encoding the segment between -1274 and -1, had the most intense staining, whereas that for M-P3 (-813 to -1) was lighter and the other fragments had similar staining intensity (Fig. 3a, c, e).

Proteins bound to the drought-responsive promoter region

A yeast one-hybrid method was next used to verify that M-P2 contained the core region of MaPIP1;1 promoter and to characterize the molecular mechanism of MaPIP1;1 regulation in drought stress. M-P2 was used as the bait segment to construct the bait vector, and a drought-treated banana cDNA single-hybrid library in yeast was screened to identify proteins that interact with core region sequences.

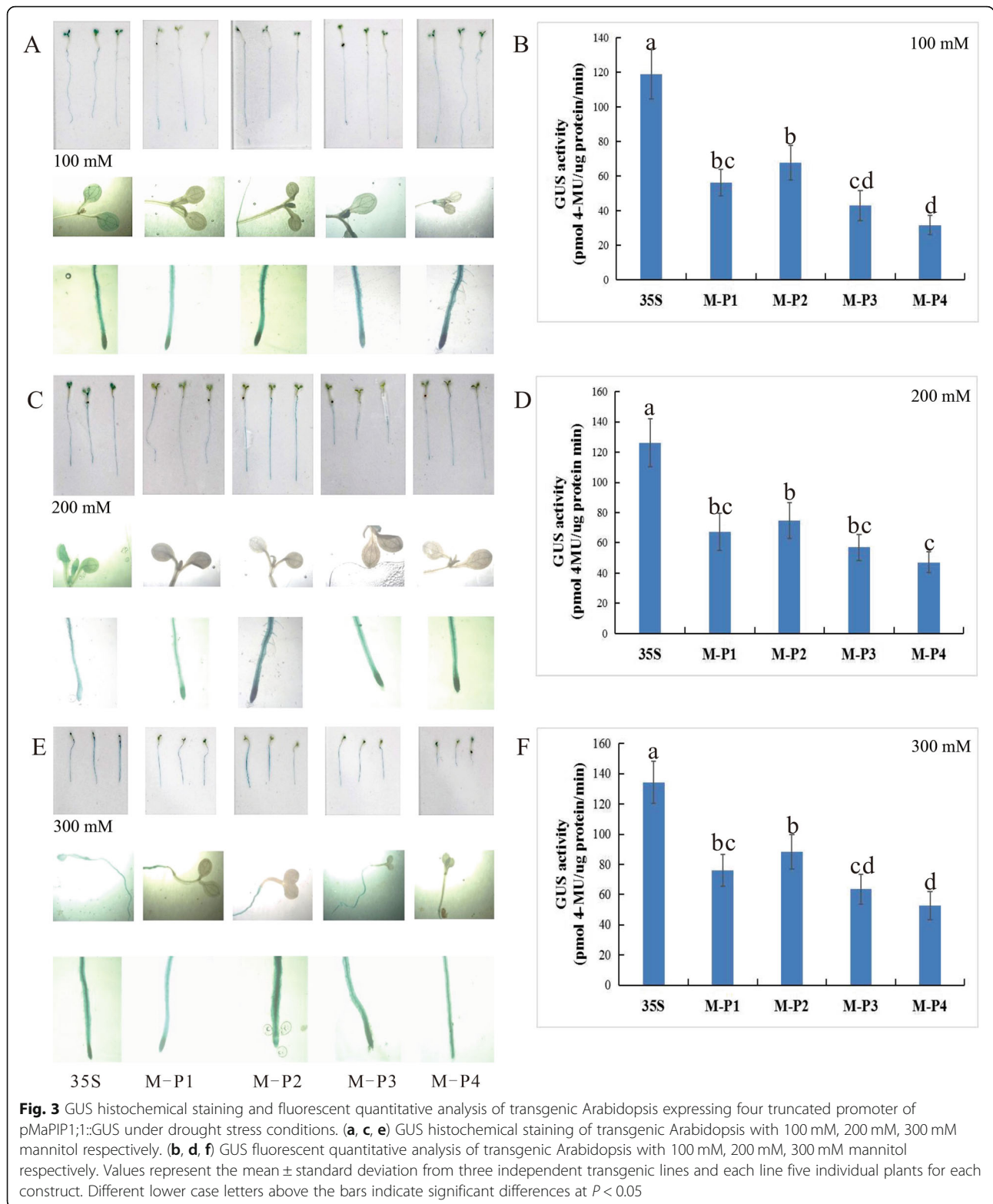
The colonies were further tested on screening plates with 3-Amino-1,2,4-Triazol (3AT). The total number of transformants is 7.46×10^5 . A total of 29 colonies could activate the HIS3 reporter gene to varying degrees, and were subjected to DNA sequencing and BLAST alignment analysis to obtain 23 different proteins that interacted with the MaPIP1;1 promoter sequence. All 23 positive clones activated the HIS3 reporter gene (Fig. 4D) and carried genes for beta-amylase (BMY), acidic chitinase, pectate lyase 2 (PL2), neutral ceramidase, glucan endo-1,3-beta-glucosidase, V-type proton ATPase subunit d2, germin-like protein, KH domain-containing protein, heat shock cognate 70 kDa protein, 3'-N-debenzoyl-2'-deoxytaxol N-benzoyltransferase, tubulin alpha-3 chain, alpha-1,4 glucan phosphorylase L isozyme, pyrrolidone-carboxylate peptidase, ADP-ribosylation factor, pyruvate kinase, levodione reductase and MADS box protein (MADS3).

qRT-PCR detection of binding proteins induced under drought stress

The expression patterns of the 23 binding proteins in the leaves and roots of five-leaf and one-hearted banana seedlings under various drought stress conditions were screened by qRT-PCR (Fig. 5). In the leaves, the expression levels of six genes, MaBMY, MaCAC, MaATP, MaPGP, MaADP1, and MaMADS3, show increased and then decreased. The expression levels of ten genes, MaX3, MaPL2, MaX2, MaHSC, MaDBF, MaGPL, MaPLP, MaCI, MaUN1089, MaPRS show increased. And the expression levels of three genes, MaGEG, MaTAC, MaX1 was decreased, the expressions of MaKH and MaMIT have not changed significantly. In the root system, the expression of MaPL2, MaATP, MaPGP, MaPCP, MaADP1, MaMADS3, MaGEG, MaKH show increased and then decreased. The expression of MaBMY, MaCAC, MaDBF, MaGPL, MaCI, MaPRS, MaMI show increased. And the expression of MaX3, MaLR, MaUN1089, MaTAC show decreased, MaX2, MaHSC, MaX1 show no obvious trends in terms of expression. We focused on one of these proteins, the transcription factor MADS3, for its effects on gene expression patterns in leaves and roots of banana plants exposed to drought stress. The expression pattern of MaMADS3 under banana drought treatment is consistent with the expression pattern of MaPIP1;1. MADS3 expression was induced by drought stress. In leaves of banana plants exposed to drought stress in the form of 45% soil moisture, the MADS3 gene showed the highest expression, 369, in the leaves. In roots, MADS3 gene expression under the same conditions was similar to that seen for leaves and was 532. This result further demonstrates that the MADS3 transcription factor can cooperate with the MaPIP1;1 gene in response to drought stress in banana plants.

Activation of the MaPIP1;1 promoter by MaMADS3

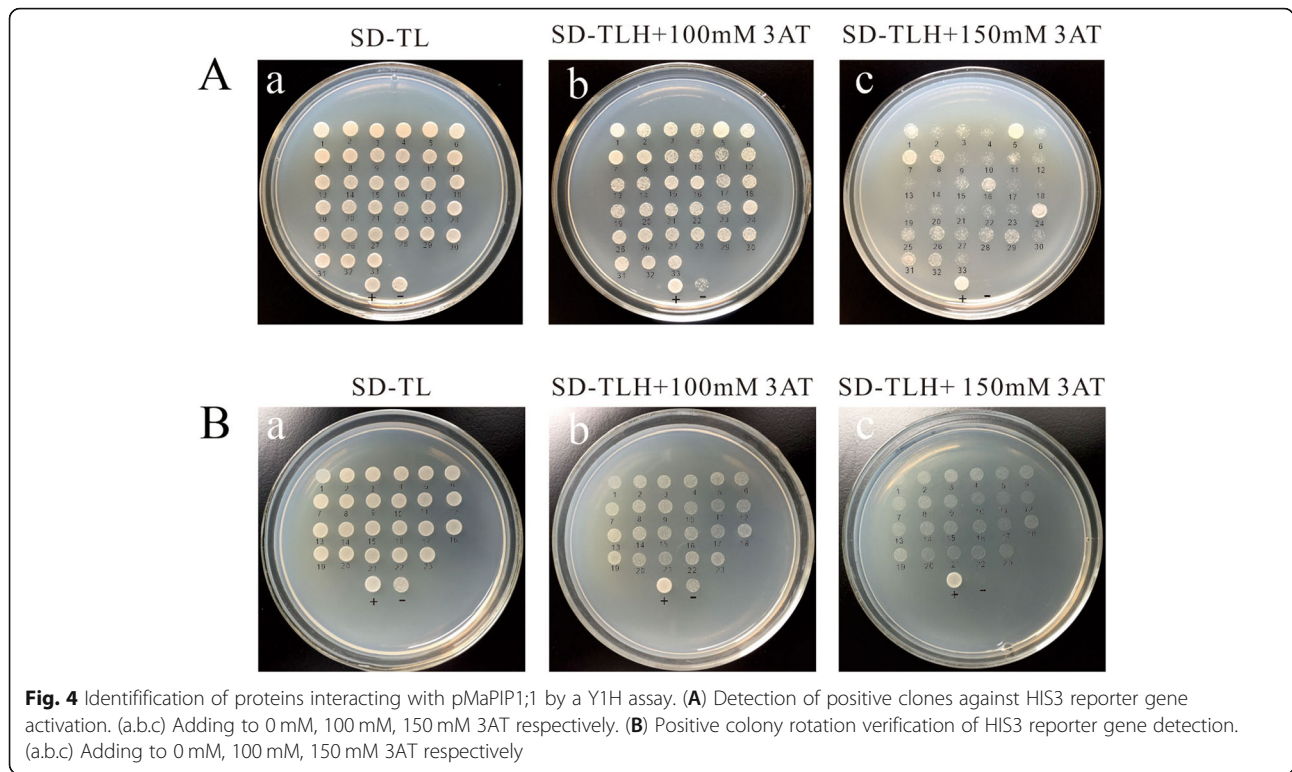
To further demonstrate that MADS3 binds to the MaPIP1;1 promoter region, a dual luciferase assay was performed. The MaPIP1;1 promoter M-P2 fragment was cloned into a reporter vector pGreen II 0800 vector termed pMaPIP1;1::LUC, and the full-length ORF for MADS3 was cloned into the effector vector pCAMBIA 1301 vector to generate 35S::MADS3 (Fig. 6). These two constructs were transformed into GV3101 *Agrobacterium*, which were infiltrated to the far side of tobacco leaves for expression. The relative luciferase activity of pMaPIP1;1::LUC was lower than that of 35S::MADS3-pMaPIP1;1::LUC, suggesting that MADS3 can positively regulate MaPIP1;1 transcription in banana.



Discussion

Abiotic stresses such as drought have caused significant losses in plant production worldwide [1]. Water is essential for plant production [2] and all processes involving

water transport including drought adjustment, single cell expansion and long distance transport, require movement of water through cell membranes [3]. AQP's enhance water permeability in plant vacuoles and plasma

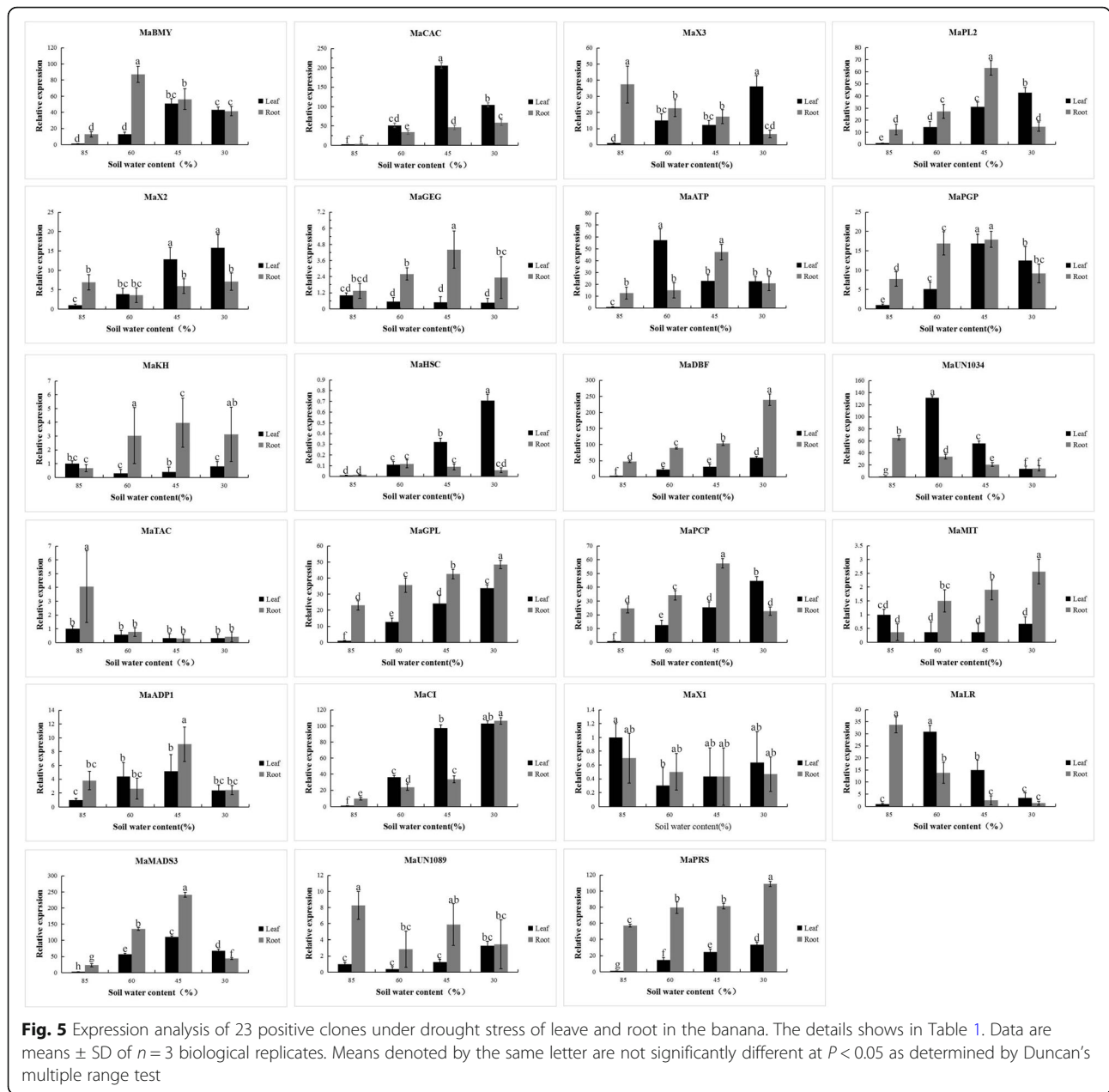


membranes [4] and play important roles in the physiology of water balance and efficient water use [5–10]. Plants have numerous aquaporin homologs. The abundance and activity of AQPs in the plasma membrane is regulated in order to control water fluxes within the cells and in and out of the cells [15]. PIP proteins belonging to the AQP family function in water transport across the plasma membrane in multiple plant species [6–8]. Many PIP family proteins are involved in abiotic stress responses [13]. Results from this study demonstrated that MaPIP1;1 can improve plant drought resistance of transgenic Arabidopsis [22].

We characterized the MaPIP1;1 promoter to understand its function in response to drought stress. Analysis of four MaPIP1;1 deletion mutants, M-P1-M-P4, under drought stress conditions revealed that M-P2 carrying the sequence –1274 to –1 upstream of the transcription initiation site ATG is a key region of the MaPIP1;1 promoter that mediates the response to drought stress. Transient measurements of GUS enzyme activity in *Arabidopsis thaliana* also showed that M-P2 was sufficient to respond to drought stress. PLACE and PlantCARE applications indicated the presence of multiple TATA-boxes and one CAAT-box in the MaPIP1;1 promoter. The TATA box is a core promoter element for gene expression at the transcription initiation site. The CAAT-box is a common cis-acting element in promoters that have enhancer activity. However, no response elements related to drought stress were found in the MaPIP1;1

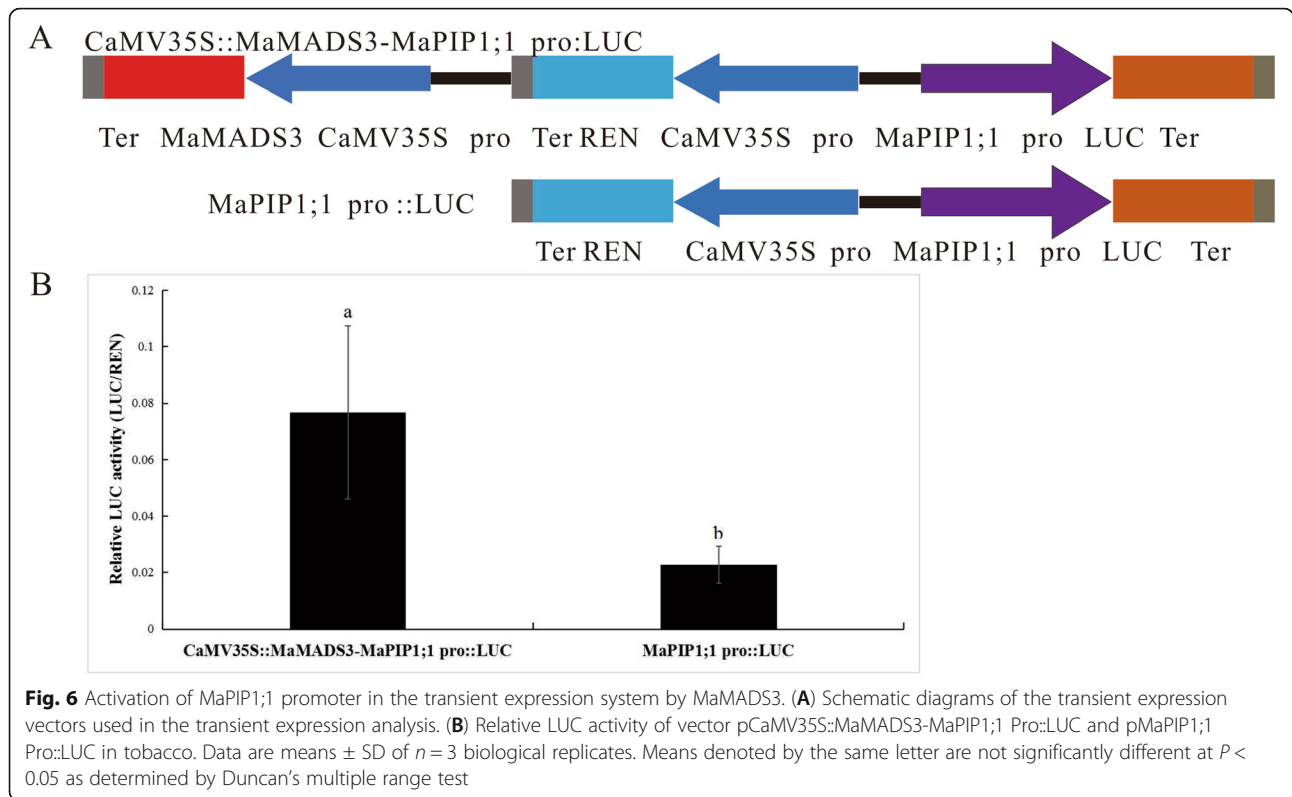
promoter. We have found the ABRE which is acis-acting element of abscisic acid (ABA). The studies have reported that ABA is an important plant hormone involved in many important biological processes and reactions, including abiotic stresses [41, 42], so we speculate that MADS3 may regulate the expression of this gene by binding to the ABRE element on the MaPIP1;1 promoter. Or maybe the M-P2 region may contain as yet unknown cis-acting elements that are critical for MaPIP1;1-mediated responses to drought stress. Nonetheless, the identification of cis-acting elements and interacting proteins in this promoter region highlight a potential important role for MaPIP1;1 in responses to drought stress.

Promoters are important for initiating gene transcription and regulate gene expression in both a temporal and spatial sense. Genetic modifications that target genes and their promoters can be used to enhance crop performance [43]. However, overexpression of transgenes can hamper plant growth and development, by imparting inefficient energy metabolism or morphological and/or physiological dysfunction [27–43]. Thus, inducible promoters that selectively drive expression of target genes under specific environmental conditions can be used to avoid negative effects of excess expression that can occur with the use of constitutive promoters [44–47]. From Fig. 2 we can see that, apart from the control 35S promoter, M-P2 is the darkest of the four fragments and has the highest GUS enzyme activity.



This indicates that the promoter fragment can better respond to drought stress. And previous experiments showed that the MaPIP1; 1 gene can resist drought stress [30]. This further verified that the fragment can promote to the MaPIP1; 1 gene, and better resist drought stress. Some plants have stronger resistance to stress when transduced with stress-inducible promoters. For example, the truncated 219-bp fragment (D8) of the maize promoter ZmGAPP can confer high levels of gene expression under high saline conditions or in the presence of drought stress in transgenic tobacco [48]. Here we used deletion mutants to identify a 1274 bp (M-P2) segment as the core fragment of the MaPIP1;1 promoter

that had the highest transcriptional activity among the mutants. In *Arabidopsis thaliana* transgenic for the M-P1-M-P4 constructs, the promoters had between 57 and 84% higher activity relative to the control CaMV35S promoter under normal and drought stress conditions, respectively. Compared with CaMV35S, M-P2 may enhance MaPIP1;1 expression in transgenic plants exposed to stress conditions. The promoter fragment of MaPIP1; 1 from banana (monocot) will be useful for drought-resistance breeding in *Arabidopsis thaliana* (dicot). The transcriptional activity and expression pattern of promoters derived from different sources may also have obvious difference in dicot and monocot. In monocots,



ubiquitin promoters are generally more capable of driving transgene expression than the CaMV35S [49–54]. Some ubiquitin promoter derived from monocots fails to direct transgene expression in dicot. The CaMV35S promoter showed more than 10% the transcriptional activity of Ubi1in tobacco protoplasts [51]. However, some promoters display strong transcriptional activity generally in both dicots and monocots. For example, a 0.3 kb AtTCTP promoter shows high transcriptional activity in Arabidopsis (dicot) and creeping bentgrass (monocot) [55]. Further characterization of transcriptional activity and expression patterns of MaPIP1;1 promoter in banana and evaluation of its application prospect in genetic improvement of monocot crops will also be meaningful.

We also used a heterologous banana-derived promoter to regulate GUS expression in Arabidopsis to confirm that M-P2 conferred high levels of expression in transgenic Arabidopsis. Staining for the reporter GUS in transgenic *Arabidopsis thaliana* under drought stress treatment mainly concentrated in the root system (Fig. 4A,C,E), which indicated that the MaPIP1;1 promoter may have root-specific promoter elements, although additional characterization is needed to confirm this possibility. Together these results lay the foundation for future applications of this promoter to direct expression of genes in root tissues.

Although many studies showed that AQP gene expression is affected by abiotic stress, there are no reports

concerning transcription factors that regulate AQP expression in plants. Here we performed yeast one-hybrid (Y1H) screening and identified 23 proteins that could act as upstream regulators of MaPIP1;1 expression. qRT-PCR showed that the expression pattern of each gene is not exactly the same. Although it can be seen from the figure that some genes are up-regulated under drought stress. However, these genes are not all in response to drought stress both in the leaves and roots. And it is also mentioned that in our previously published paper [30], MaPIP1;1 was induced in both leaves and roots. The highest expression of MaPIP1;1 was when the soil moisture content is 45%. Therefore, we selected the MADS3 gene consistent with its expression pattern for further research.

The MADS-BOX is associated with responses of plants to stress conditions. Expression of the rice OsMADS31 gene is down-regulated under high salt conditions and can respond to high salt stress during rice germination [56]. LcMADS1 and LcMADS2 expression in Mianyang grass is significantly induced by cold-induced injury, whereas LcMADS9 expression is up-regulated by NaCl [57]. In canola, 13 BrMADS genes responded to cold stress in qPCR expression analysis. Moreover, 19 BrMADS genes responded to drought and salt stress [58]. Here we showed that MaMADS3 binds the MaPIP1;1 promoter to regulate gene expression. However, whether MaMADS3 regulates MaPIP1;1 gene

expression in vivo in banana remains unclear. Further studies on the relationship between MaMADS3 and MaPIP1;1 in banana are thus necessary to fully elucidate the complex regulatory mechanism of MaPIP1;1 expression in response to drought stress.

Conclusions

In summary, the 1362 bp upstream of the MaPIP1;1 translation initiation site, was isolated from the banana genome. Four segments named M-P1, M-P2, M-P3 and M-P4 have been transformed to *Arabidopsis*, respectively and reacted well to drought treatment. M-P2 (–1274 bp to –1) showed the highest transcriptional activity among all transgenic *Arabidopsis* tissues, indicating that M-P2 contains the core region of pMaPIP1;1. Using M-P2 as a yeast one-hybrid bait, 23 different transcription factors or genes that interacted with MaPIP1;1 were screened. And the transcription factor MADS3 positively regulated MaPIP1;1 transcription which was further using an dual luciferase assay in vitro interaction detection. The results indicate that MaPIP1;1 mediates the molecular mechanisms associated with banana drought response and will enhance our understanding of AQP gene expression regulation patterns.

Methods

Isolation of MaPIP1;1 promoter sequence

The ATG start codon of MaPIP1;1 was obtained from the Banana A genome website (<http://banana-genome.cirad.fr/>) based on banana genome sequencing (Nature, 2012, 488: 213–217). The sequence was amplified from banana genomic DNA by screening primers for pMaPIP1;1 (Table 1) and confirmed by sequencing. Finally, a 1362 bp fragment upstream of the transcriptional start site (TSS) of MaPIP1;1 was obtained by polymerase chain reaction (PCR) amplification using the PZ1 primer (Table 1) and was considered to be the full-length promoter.

Bioinformatic analysis of the promoter sequence

The 1362 bp MaPIP1;1 promoter cis-acting element was analyzed using PLACE (<http://www.dna.affrc.go.jp/PLACE/signalup.html>) and PlantCARE (<http://bioinformatics.psb.ugent.be/>

[/webtools/plantcare/html](#)). The analysis and location of the active components are shown.

Construction of promoter: GUS fusion plasmids

Four differently-sized 5'-terminal deletion fragments (M-P1 - M-P4) (–1362, –1334, –813, –223 to –1 bp) were amplified with corresponding primers (Table 1) and the PCR products were cloned into the pCAMBIA 1304 vector (Cambia, Australia) digested with BamHI/EcoRI. The construct was verified by restriction

digestion analysis and sequencing. The resulting constructs were used for stable transformation of *Arabidopsis thaliana* (Colombia), which was obtained from the BiyuXu lab of CATAS. And YiXu has undertooked the formal identification. The pCAMBIA1304 vector containing the CaMV35S promoter was used as a positive control.

Arabidopsis thaliana culture and genetic transformation

The pCAMBIA1304 vector and the vector carrying M-P1-M-P4 promoters were transformed into *Agrobacterium*, which was cultured for 10 h with shaking at 28 °C in YEB medium containing Kan and Rif antibiotics and added to an *Arabidopsis* transgenic infiltration solution (1/2 MS, 50 g/L). *Arabidopsis thaliana* in sucrose was inverted and inoculated into bacterial liquid, and transformed using the inflorescence dip method. Dried seeds were soaked in 75% ethanol + 0.02% Triton X-100 solution for 10 min. The ethanol was removed, the seeds were washed 2–3 times and blown onto sterile filter paper to facilitate air drying before spreading on selection medium (1/2MS, 1.5% Sucrose, 0.7% Agra, 25 µg/mL hygromycin B). After incubating for 3 days in the dark at 4 °C, the seeds were transferred to the culture room and grown at 23 °C. Ten days later, seedlings showing normal growth were transplanted. In the flower buds, the proportion of seedlings and lethal seedlings that can grow normally in the T1 generation were calculated. Seeds from the T2 generation with a ratio of 3:1 were transplanted into culture medium, and after a week of acclimatization, were watered with an appropriate amount of 1/2TM *Arabidopsis* nutrient solution every 5 days. When the seeds had germinated, the T2 generation were harvested for subsequent experimental analyses.

Drought treatments

Drought stress analyses were performed on *Arabidopsis* seedlings. For drought stress analyses, 4 day-old seedlings CaMV35S promoter transgenic plants and the M-P1-M-P4 transgenic plans were transferred to MS medium supplemented with 100–300 mM mannitol for 15 days. GUS staining, GUS enzyme activity assays and photographing were performed separately.

For drought stress determination in banana plants, the soil water content was measured according to previously described procedures (TZS-1, TOP, Zhejiang, China) and water was removed from banana seedlings grown in soil. The soil moisture content associated with different stress levels was outlined by Hsiao (1973) [59]. Samples were taken at the indicated time.

Histochemical and fluorometric determination of GUS enzyme activity

Fresh samples (small plants) were placed in X-Gluc solution (GBT, St. Louis, USA) [60] for histochemical. The tissues were placed in GUS staining solution containing 50 mM sodium phosphate (pH 7.0), 0.5 mM potassium ferricyanide, 0.5 mM potassium ferrocyanide, 10 mM EDTA, 0.1% Triton X-100 and 1 mM X-Gluc, then D1-D3 and D4-D9 fragments incubated at 37 °C for 24 h. Fluorometric determination of GUS enzyme activity using 4-methylumbelliferyl glucuronide.

Isolation and its quantitative analysis (qPCR) of total RNA

Total RNA was extracted from drought-treated five-leaf and one-hearted banana seedlings. The RNA (1 µg) was used to prepare cDNA using the Superscript III reverse transcriptase system. cDNA with an oligo (dT) primer according to the instruction of the PrimeScript first-strand cDNA synthesis kit (Takara) The cDNA was diluted 6-fold and 1.5 µL was used as a template in each reaction. Expression analysis was performed using RT-qPCR as described above. The resulting data were normalized with ACTIN2 and the fold-change in expression levels was calculated relative to the respective controls.

Statistical analysis

Statistical software SAS 9.2 was used to perform t-tests, analysis of variance and chi-square tests to determine significant differences between the means ($P < 0.05$). Each experiment included three replicates.

Yeast one-hybrid (Y1H) screening

Y1H screens were carried out using the Matchmaker Gold One hybrid library screening system (Clontech, Cat. No. 630304). The bait sequence was cloned into the pAbAi pHIS2 vector, conferring resistance to 3AT (a cyclic depsipeptide antibiotic used as a yeast selection marker). The resulting pHIS2-Bait construct was then linearized and integrated into the genome of Y1HGold yeast by homologous recombination to generate a bait-specific reporter strain. The minimum inhibitory concentration of 3AT of the bait-specific reporter strain was determined. Competent cells were prepared using Y187 yeast transformants containing the bait plasmid as recipients. The library plasmid pGADT7 was transferred into it and screened on selection medium SD-Trp-Leu and SD-Trp-Leu-His + 50 mM 3AT. The positive colonies grown on selection medium SD-Trp-Leu were diluted with sterile water and spotted onto SD-Trp-Leu, SD-Trp-Leu-His + 100 mM 3AT and SD-Trp-Leu-His + 150 mM 3AT-deficient plates, were grown on 30 °C for 3–4 days. And then the screening of positive clones were for plasmid extraction and sequencing.

Dual luciferase assays

Dual luciferase assays were carried out as described by [61]. In this study, LUC and REN were derived from pGreen II 0800-LUC. The MaPIP1;1 promoter obtained by PCR was ligated to LUC digested with SpeI to generate MaPIP1;1 pro::LUC. MaMADS3 CDS was fused to the CaMV35 promoter following Sall digestion and ligated to MaPIP1;1 pro::LUC to generate CaMV35S::MaMADS3-MaPIP1;1 pro::LUC. Both constructs were introduced into the *A. tumefaciens* strain BLA4404. When the OD600 reached 0.6–1.0, the culture was infiltrated to the far side of tobacco leaves. Total protein was extracted from the infected area after 3 days of culture. Fluorescence values for LUC and REN were measured with the Dual Luciferase Reporter Assay System according to the manufacturer's instructions (Promega, United States). The value of LUC was normalized to that of REN. Due to the sensitivity of the experiment, 16 replicates were used per experiment and 8–10 replicates were retained for analysis.

Supplementary information

Supplementary information accompanies this paper at <https://doi.org/10.1186/s12870-020-02472-7>.

Additional file 1 Table S1. Polymerase chain reaction (PCR) primers of the promoter used in the present study.

Additional file 2 Table S2. Self-activation testing (A) Self-activation testing of the bait. (a,b,c) Inhibition of bait carrier self-activation add to 0 mM, 25 mM, 50 mM 3AT respectively. d,e,f, Positive control, pGAD53m + p53HIS. (g,h,i) Negative control, pGAD53m + pHIS2. (B) The library screening efficiency. (a,b,c) The dilution of 10, 100, 1000 multiples respectively

Additional file 3 Table S3. The 23 protein binding with MaPIP1;1.

Abbreviations

AbA: Aureobasidin A; MeJA: methyl jasmonate; AQP: Aquaporins; ABA: abscisic acid

Acknowledgements

Not applicable.

Authors' contributions

SS and JL conceived the study. YX designed the experiments and wrote the manuscript. ZJ, BX, YL, AW, WH, DH, QW, ZX performed the experiments and carried out the analysis. All authors read and approved the final manuscript. All authors have read and approved the manuscript.

Funding

This work was supported by Central Public-interest Scientific Institution Basal Research Fund for Chinese Academy of Tropical Agricultural Sciences (No. 1630092020002), The National Natural Science Foundation of China (31501371), The Earmarked Fund For China Agriculture Research System (CARS-31-02, 03). The funders had no role in the experimental design, data collection and analysis or writing the manuscript.

Availability of data and materials

All data generated or analysed during this study are included in this published article and its supplementary information files.

Ethics approval and consent to participate

Not applicable.

Consent for publication

Not applicable.

Competing interests

The authors declare that they have no competing interests.

Author details

¹Key Laboratory of Genetic Improvement of Bananas, Haikou Experimental Station, Chinese Academy of Tropical Agricultural Sciences, Haikou, China.

²Key Laboratory of Tropical Crop Biotechnology, Institute of Tropical Bioscience and Biotechnology, Chinese Academy of Tropical Agricultural Sciences, Haikou, China. ³Hainan University, Haikou, China.

Received: 28 February 2020 Accepted: 26 May 2020

Published online: 16 June 2020

References

- Mueller, N.D., Gerber, J.S., Johnston, M., Ray, D.K., Ramankutty, N., Foley, J.A. Closing yield gaps through nutrient and water management. *Nature*. 2012, 490, 254–257.
- Boyer, J.S. Plant productivity and environment. *Science*. 1982, 218, 443–448.
- Agarwal, P.K., Shukla, P.S., Gupta, K., Jha, B. Bioengineering for salinity tolerance in plants: state of the art. *Mol Biotechnol* 2013, 54, 102–123.
- Golldack, D., Li, C., Mohan, H., Probst, N. Tolerance to drought and salt stress in plants: unraveling the signaling networks. *Front Plant Sci* 2014, 5, 151.
- Kaur, C., Kumar, G., Kaur, S., Ansari, M.W., Pareek, A., Sopory, S.K., et al. Molecular cloning and characterization of salt overly sensitive gene promoter from Brassica juncea (BJSOS2). *Mol Biol Rep* 2015, 42, 1139–1148.
- Corey, L., Pedram, R., Navin, R., Influence of extreme weather disasters on global crop production. *Nature*. 2016, 529, 84–87.
- Stuedle, E., Schulze, E. The regulation of plant water at the cell, tissue, and organ level: role of active processes and of compartmentation, in: E.D. Schulze (Eds.), Flux control in biological systems: from enzymes to populations and ecosystems, Academic Press, San Diego. 1994, pp. 237–299.
- Zhao, C.X., Shao, H.B., Chu, L.Y. Aquaporin structure-function relationships: water flow through plant living cells. *Colloid Surf. B-Biointerfaces*. 2008, 62, 163–172.
- Maurel, C. Aquaporins and water permeability of plant membranes. *Annu. Rev Plant Physiol Plant Mol Biol* 1997, 48, 399–429.
- Siefritz, F., Tyree, M.T., Lovisolo, C., Schubert, A., Kaldenhoff, R. PIP1 plasma membrane aquaporins in tobacco: from cellular effects to function in plants. *Plant Cell* 2002, 14, 869–876.
- Tyerman, S.D., Niemietz, C., Bramley, H. Plant aquaporins: multifunctional water and solute channels with expanding roles. *Plant Cell Environ* 2002, 25, 173–194.
- Martre, P., Morillon, R., Barriue, F., North, G.B., Nobel, P.S., Chrispeels, M.J. Plasma membrane aquaporins play a significant role during recovery from water deficit. *Plant Physiol* 2002, 130, 2101–2110.
- Maurel, C. Plant aquaporins: novel functions and regulation properties. *FEBS Lett* 2007, 581, 2227–2236.
- Aharon, R., Shahak, Y., Winer, S., Bendov, R., Kapulnik, Y., Galili, G. Overexpression of a plasma membrane aquaporin in transgenic tobacco improves plant vigor under favorable growth conditions but not under drought or salt stress. *Plant Cell* 2003, 15, 439–447.
- Veronika, N., and Susanna T. H. Phosphorylation-Dependent Regulation of Mammalian Aquaporins. *Cells* 2019, 8, 82.
- Conner AC, Bill RM, Conner MT. An emerging consensus on aquaporin translocation as a Regulatory Mechanism. *Mol Membr Biol*. 2013;30:101–12.
- Kreida S, Susanna TH. Structural insights into aquaporin selectivity and regulation. *Curr Opin Struct Biol*. 2015;33:126–34.
- Maurel, C. Plant aquaporins: novel functions and regulation properties. *FEBS Lett* 2007, 581, 2227–2236.
- Bramley, H., Turner, D.W., Tyerman, S.D., Turner, N.C. Water flow in the roots of crop species: the influence of root structure, aquaporin activity, and water logging. *Adv Agron* 2007, 96, 133–196.
- Gomes, D., Agasse, A., Thiébaud, P., Delrot, S., Geros, H., Chaumon, F. Aquaporins are multifunctional water and solute transporters highly divergent in living organisms. *Biochim Biophys Acta* 2009, 1788, 1213–1228.
- Zwiazek, J.J., Tan, X., Xu, H., Navarro-Ródenas, A., Morte, A. Functional significance of oxygen transport through aquaporins. *Sci Rep* 2017, 17, 40411.
- Xu, Y., Hu, W., Liu, J.H., Song, S., Hou, X.W., Jia, C.H., Li, J.Y., Miao, H.X., Wang, Z., Tie, W.W., Xu, B.Y., Jin, Z.H. An aquaporin gene MaPIP2-7 is involved in tolerance to drought, cold and salt stresses in transgenic banana (*Musa acuminata* L.). *Plant Physiology and Biochemistry*. 2020, 147, 66–76.
- Athar, H., Rabbia, T., Ghulam, Mustafa, Muhammed, F., Imran, A., Shahid, M. Comparative phylogenetic analysis of aquaporins provides insight into the gene family expansion and evolution in plants and their role in drought tolerant and susceptible chickpea cultivars. *Genomics*. 2020, 112, 263–275.
- Gao, Z., He, X., Zhao, B., et al. Overexpressing a putative aquaporin gene from wheat, TaNIP, enhances salt tolerance in transgenic Arabidopsis. *Plant Cell Physiol*. 2010, 51, 767–775.
- Kapilan, R., Vazir, M., Zwiazek, J.J. Regulation of aquaporins in plants under stress. *Biol Res* 2018, 51, 4.
- Hu, W., Yuan, Q., Wang, Y., et al. Overexpression of a wheat aquaporin gene, TaAQP8, enhances salt stress tolerance in transgenic tobacco. *Plant Cell Physiol* 2012, 53, 2127–2141.
- Zhou, S., Hu, W., Deng, X. Overexpression of the wheat aquaporin gene, TaAQP7, enhances drought tolerance in transgenic tobacco. *PLoS One*. 2012, 7, 12: e52439.
- Xu, C.H., Wang, M., Zhou, L., et al. Heterologous Expression of the Wheat Aquaporin Gene TaTIP2;2 Compromises the Abiotic Stress Tolerance of *Arabidopsis thaliana*. *PLoS One*. 2013, 8, 11: e79618.
- Sreedharan, S., Shekhawat, U.K., Ganapathi, T.R. Transgenic banana plants overexpressing a native plasma membrane aquaporin MusaPIP1;2 display high tolerance levels to different abiotic stresses. *Plant Biotechnol J* 2013, 11, 942–952.
- Xu, Y., Hu, W., Liu, J.H., Zhang, J.B., Jia, C.H., Miao, H.X., Xu, B.Y., Jin, Z.H. A banana aquaporin gene, MaPIP1;1, is involved in tolerance to drought and salt stresses. *BMC Plant Biology*. 2014, 14, 59.
- Ahmad, P., Prasad, M.N.V. Abiotic Stress Responses in Plants: Metabolism, Productivity and Sustainability. *Springer New York Dordrecht Heidelberg London*. 2012a, 473p.
- Ahmad, P., Prasad, M.N.V. Environmental Adaptations and Stress Tolerance in of Plants in the Era of Climate Change. *Springer New York Dordrecht Heidelberg London*. 2012b, 715p.
- Mitsuhashi, J., Ugaki, M., Hirochika, H., Ohshima, M., Murakami, T., Gotoh, Y., et al. Efficient promoter cassettes for enhanced expression of foreign genes in dicotyledonous and monocotyledonous plants. *Plant Cell Physiol*. 1996, 37, 49–59.
- Ptashne, M. Regulation of transcription: from lambda to eukaryotes. *Trends Biochem Sci* 2005, 30, 275–279.
- Wehner, N., Weiste, C., and Droge-Laser, W. Molecular screening tools to study Arabidopsis transcription factors. *Front. Plant Sci*. 2011, 2, 68.
- Sinha, N.R., Williams, R.E., and Hake, S. Overexpression of the maize homeo box gene, KNOTTED-1, causes a switch from determinate to indeterminate cell fates. *Gene Dev*. 1993, 7, 787–795.
- Cheon, B.Y., Kim, H.J., Oh, K.H., Bahn, S.C., Ahn, J.H., Choi, J.W., et al. Over expression of human erythropoietin (EPO) affects plant morphologies: retarded vegetative growth in tobacco and male sterility in tobacco and Arabidopsis. *Transgenic Res*. 2004, 13, 541–549.
- Zhao, J., Ren, W., Zhi, D., Wang, L., and Xia, G. Arabidopsis DREB1A/CBF3 bestows transgenic tall fescue increased tolerance to drought stress. *Plant Cell Rep*. 2007, 26, 1521–1528.
- Shinozaki, Y., and Shinozaki, K. Characterization of the expression of a desiccation-responsive 29 gene of Arabidopsis thaliana and analysis of its promoter in transgenic plants. *Mol. Gen. Genet*. 1993, 236, 331–340.
- Tavakoli, E., Sardaro, M.L., Shariati, J.V., Rossini, L., and Porceddu, E. Promoter analysis and expression profile of in response to drought stress in wheat ancestors. *Gene*. 2014, 549, 24–32.
- Malika, A., Delphine, M., Denis, F., Jean-Luc, V., Aurore, V., Emmanuel, G., Khaled, M. Functional analysis of the durum wheat gene TdPIP2;1 and its promoter region in response to abiotic stress in rice. *Plant Physiology and Biochemistry*. 2014, 79, 98–108.
- Zhang, H., Hou, J., Jiang, P., Qi, S., Xu, C., He, Q., Ding, Z., Wang, Z., Zhang, K., Li, K. Identification of a 467 bp promoter of maize phosphatidylinositol synthase gene (ZmPIS) which confers high-level gene expression and salinity or osmotic stress inducibility in transgenic tobacco. *Front Plant Sci* 2016, 7.
- Potenza, L., Cucchiari, L., Piatti, E., Angelini, U., Dacha, M. Effects of high static magnetic field exposure on different DNAs. *Bioelectromagnetics*. 2004, 25, 352–355.
- Busk, P.K., Pagès, M. Regulation of abscisic acid-induced transcription. *Plant Mol Biol* 1998, 37(3):425–435.

45. Hsieh, T.H., Lee, J.T., Charng, Y.Y., Chan, M.T. Tomato plants ectopically expressing Arabidopsis CBF1 show enhanced resistance to water deficit stress. *Plant Physiol* 2002, 130: 618–626.
46. Hou, J., Jiang, P., Qi, S., Zhang, K., He, Q., Xu, C. et al. Isolation and Functional Validation of Salinity and Osmotic Stress Inducible Promoter from the Maize Type-II H⁺ -Pyrophosphatase Gene by Deletion Analysis in Transgenic Tobacco Plants. *PLoS ONE*. 2016, 11,4: e0154041.
47. Zavallo, D., Bilbao, M.L., Hopp, H.E., Heinz, R. Isolation and functional characterization of two novel seed specific promoters from sunflower (*Helianthus annuus* L.). *Plant Cell Rep.* 2010, 29, 239–248.
48. Lee, J.T., Prasad, V., Yang, P.T., Wu, J.F., David Ho, T.H., Charng, Y.Y., et al. Expression of Arabidopsis CBF1 regulated by an ABA/stress inducible promoter in transgenic tomato confers stress tolerance without affecting yield. *Plant cell environment*. 2003, 26: 1181–1190.
49. Christensen AH, Sharrock RA, Quail PH. Maize polyubiquitin genes: structure, thermal perturbation of expression and transcript splicing, and promoter activity following transfer to protoplasts by electroporation. *Plant Mol Biol.* 1992;18:675–89.
50. Cornejo MJ, Luth D, Blankenship KM, Anderson OD, Blechl AE. Activity of a maize ubiquitin promoter in transgenic rice. *Plant Mol Biol.* 1993;23:567–81.
51. Schledzewski K, Mendel RR. Quantitative transient gene expression: comparison of the promoters for maize polyubiquitin1, rice actin1, maize-derived emu and CaMV 35S in cells of barley, maize and tobacco. *Transgenic Res.* 1994;3:249–55.
52. Joung YH, Kamo K. Expression of a polyubiquitin promoter isolated from *Gladiolus*. *Plant Cell Rep.* 2006;25:1081–8.
53. Kamo K, Kim AY, Park SH, Joung YH. The 5' UTR-intron of the *Gladiolus* polyubiquitin promoter GUBQ1 enhances translation efficiency in *Gladiolus* and *Arabidopsis*. *BMC Plant Biol.* 2012;12:79.
54. Tao YB, He LL, Niu LJ, Xu ZF. Isolation and characterization of an ubiquitin extension protein gene (JcUEP) promoter from *Jatropha curcas*. *Planta.* 2015;241:823–36.
55. Han YJ, Kim YM, Hwang OJ, Kim JI. Characterization of a small constitutive promoter from *Arabidopsis* translationally controlled tumor protein (AtTCTP) gene for plant transformation. *Plant Cell Rep.* 2015;34:265–75.
56. Yu, J., Zhao, W., Tong, W., He, Q., Yoon, M.Y., Li, F.P., Choi, B., Heo, E.B., Kim, K.W., Park, Y.J. A Genome-Wide Association Study Reveals Candidate Genes Related to Salt Tolerance in Rice (*Oryza sativa*) at the Germination Stage. *Int J Mol Sci.* 2018, 12, 19(10).
57. Jia, J., Zhao, P., Cheng, L., Yuan, G., Yang, W., Liu, S., Chen, S., Qi, D., Liu, G., Li, X. MADS-box family genes in sheepgrass and their involvement in abiotic stress responses. *BMC Plant Biol.* 2018, 14, 18(1):42.
58. Saha, G., Park, J.I., Jung, H.J., Ahmed, N.U., Kayum, M.A., Chung, M.Y., Hur, Y., Cho, Y.G., Watanabe, M., Nou, I.S. Genome-wide identification and characterization of MADS-box family genes related to organ development and stress resistance in *Brassica rapa*. *BMC Genomics.* 2015, 14, 16:178.
59. Hsiao TC. Plant responses to water stress. *Ann Rev Plant Physiol.* 1973, 24: 519–570.
60. Jefferson RA, Kavanagh TA, Bevan MW. GUS fusions: beta-glucuronidase as a sensitive and versatile gene fusion marker in higher plants. *EMBO J.* 1987;6: 3901–7.
61. Hellens, R.P., Allan, A.C., Frie, E.N., Bolitho, K., Grafton, K., Templeton, M.D., Karunairetnam, S., Gleave, A.P., Laing, W.A. Transient expression vectors for functional genomics, quantification of promoter activity and RNA silencing in plants. *Plant Methods.* 2005, 18, 1:13.

Publisher's Note

Springer Nature remains neutral with regard to jurisdictional claims in published maps and institutional affiliations.

Ready to submit your research? Choose BMC and benefit from:

- fast, convenient online submission
- thorough peer review by experienced researchers in your field
- rapid publication on acceptance
- support for research data, including large and complex data types
- gold Open Access which fosters wider collaboration and increased citations
- maximum visibility for your research: over 100M website views per year

At BMC, research is always in progress.

Learn more biomedcentral.com/submissions

