

Research article

Open Access

## Evolution of the C<sub>4</sub> phosphoenolpyruvate carboxylase promoter of the C<sub>4</sub> species *Flaveria trinervia*: the role of the proximal promoter region

Sascha Engelmann<sup>1</sup>, Corinna Zogel<sup>1,2</sup>, Maria Koczor<sup>1</sup>, Ute Schlue<sup>1</sup>,  
Monika Streubel<sup>1</sup> and Peter Westhoff\*<sup>1</sup>

Address: <sup>1</sup>Institut für Entwicklungs- und Molekularbiologie der Pflanzen, Heinrich-Heine-Universität, Universitätsstr. 1, 40225 Düsseldorf, Germany and <sup>2</sup>Institut für Humangenetik der Universität Duisburg-Essen, Hufelandstr. 55, 45122 Essen, Germany

Email: Sascha Engelmann - engelmas@uni-duesseldorf.de; Corinna Zogel - corinna.zogel@uni-due.de; Maria Koczor - Maria.Koczor@uni-duesseldorf.de; Ute Schlue - Ute.Schlue@uni-duesseldorf.de; Monika Streubel - streubel@uni-duesseldorf.de; Peter Westhoff\* - west@uni-duesseldorf.de

\* Corresponding author

Published: 21 January 2008

Received: 8 November 2007

BMC Plant Biology 2008, 8:4 doi:10.1186/1471-2229-8-4

Accepted: 21 January 2008

This article is available from: <http://www.biomedcentral.com/1471-2229/8/4>

© 2008 Engelmann et al; licensee BioMed Central Ltd.

This is an Open Access article distributed under the terms of the Creative Commons Attribution License (<http://creativecommons.org/licenses/by/2.0>), which permits unrestricted use, distribution, and reproduction in any medium, provided the original work is properly cited.

### Abstract

**Background:** The key enzymes of photosynthetic carbon assimilation in C<sub>4</sub> plants have evolved independently several times from C<sub>3</sub> isoforms that were present in the C<sub>3</sub> ancestral species. The C<sub>4</sub> isoform of phosphoenolpyruvate carboxylase (PEPC), the primary CO<sub>2</sub>-fixing enzyme of the C<sub>4</sub> cycle, is specifically expressed at high levels in mesophyll cells of the leaves of C<sub>4</sub> species. We are interested in understanding the molecular changes that are responsible for the evolution of this C<sub>4</sub>-characteristic PEPC expression pattern, and we are using the genus *Flaveria* (Asteraceae) as a model system. It is known that *cis*-regulatory sequences for mesophyll-specific expression of the *ppcA1* gene of *F. trinervia* (C<sub>4</sub>) are located within a distal promoter region (DR).

**Results:** In this study we focus on the proximal region (PR) of the *ppcA1* promoter of *F. trinervia* and present an analysis of its function in establishing a C<sub>4</sub>-specific expression pattern. We demonstrate that the PR harbours *cis*-regulatory determinants which account for high levels of PEPC expression in the leaf. Our results further suggest that an intron in the 5' untranslated leader region of the PR is not essential for the control of *ppcA1* gene expression.

**Conclusion:** The allocation of *cis*-regulatory elements for enhanced expression levels to the proximal region of the *ppcA1* promoter provides further insight into the regulation of PEPC expression in C<sub>4</sub> leaves.

### Background

About 90% of terrestrial plant species, including major crops such as rice, soybean, barley and wheat, assimilate CO<sub>2</sub> via the C<sub>3</sub> pathway of photosynthesis. Ribulose-1,5-bisphosphate carboxylase/oxygenase (Rubisco) acts as the primary CO<sub>2</sub>-fixing enzyme of C<sub>3</sub> photosynthesis, but its

ability to use O<sub>2</sub> as a substrate instead of CO<sub>2</sub> results in the energy-wasting process of photorespiration. The photosynthetic C<sub>4</sub> cycle represents an addition to the C<sub>3</sub> pathway which acts as a pump that accumulates CO<sub>2</sub> at the site of Rubisco so that the oxygenase activity of the enzyme is inhibited and photorespiration is largely suppressed. C<sub>4</sub>

plants therefore achieve higher photosynthetic capacities and better water- and nitrogen-use efficiencies when compared with C<sub>3</sub> species [1].

C<sub>4</sub> photosynthesis is characterized by the coordinated division of labour between two morphologically distinct cell types, the mesophyll and the bundle-sheath cells. The correct functioning of the C<sub>4</sub> cycle depends upon the strict compartmentalization of the CO<sub>2</sub> assimilatory enzymes into either mesophyll or bundle-sheath cells [2]. Phosphoenolpyruvate carboxylase (PEPC), which serves as the actual CO<sub>2</sub> pump of the C<sub>4</sub> pathway, is specifically expressed in the mesophyll cells of C<sub>4</sub> leaves. This enzyme is not an unique feature of C<sub>4</sub> species; other PEPC isoforms with different catalytic and regulatory properties are found in both photosynthetic and non-photosynthetic tissues of all plants where they participate in a variety of metabolic processes, e.g. replenishment of citric acid cycle intermediates and regulation of guard cell movement [3].

The polyphyletic origin of C<sub>4</sub> photosynthesis suggests that the photosynthetic C<sub>4</sub> isoforms of PEPC have evolved independently several times from non-photosynthetic C<sub>3</sub> isozymes [4]. During the evolution of C<sub>4</sub> PEPC genes from ancestral C<sub>3</sub> genes, changes in expression strength and organ- and cell-specific expression patterns must have occurred. While C<sub>4</sub> PEPC genes are highly expressed in the mesophyll cells of the leaf, the C<sub>3</sub> isoform genes are only moderately transcribed in all plant organs [5-8].

To investigate the molecular evolution of a C<sub>4</sub> PEPC gene we are using the genus *Flaveria* (Asteraceae) as a model system. This genus includes C<sub>4</sub> and C<sub>3</sub> as well as C<sub>3</sub>-C<sub>4</sub> intermediate species [9,10] and thus provides an excellent system for studying the evolution of the C<sub>4</sub> photosynthetic pathway [11]. Previous studies on the *ppcA1* gene of *F. trinervia*, encoding the C<sub>4</sub> isoform of PEPC, revealed that the strong mesophyll-specific expression is largely regulated at the transcriptional level and that the available 2188 bp (with reference to the AUG start codon of the *ppcA1* reading frame) of the 5' flanking sequences contain all the essential *cis*-regulatory elements for high and mesophyll-specific expression [12]. Two parts of the *ppcA1* promoter of *F. trinervia*, a proximal region (PR) up to -570 in combination with a distal region (DR) from -1566 to -2141, are sufficient to direct a high mesophyll-specific expression of a  $\beta$ -glucuronidase (GUS) reporter gene in transgenic *F. bidentis* (C<sub>4</sub>) plants [13]. The orthologous, 2538 bp comprising *ppcA1* promoter of the C<sub>3</sub> species *F. pringlei* displays only weak activity in all interior leaf tissues in transgenic *F. bidentis*, but fusion of the C<sub>4</sub>-DR to this C<sub>3</sub> PEPC promoter leads to a confinement of GUS expression to the mesophyll [13]. Analysis of the C<sub>4</sub>-DR revealed that the 41-bp module MEM1 (mesophyll expression module 1) is responsible for the C<sub>4</sub>-character-

istic spatial expression pattern of the *ppcA1* gene of *F. trinervia*. Furthermore, it was shown that a high level of expression in the mesophyll requires an interaction of the C<sub>4</sub>-DR with the C<sub>4</sub>-PR. This suggests that quantity elements for an elevated expression of the C<sub>4</sub> PEPC gene are located within the PR of the 5' flanking sequences [13].

Using the yeast one-hybrid system, Windhövel and colleagues [14,15] identified four different proteins which bind to the PR of the *ppcA1* promoter of *F. trinervia*, but not to the corresponding part of the *ppcA1* promoter of *F. pringlei*. These proteins (named FtHB1 to FtHB4) belong to the class of zinc finger homeodomain proteins (ZFHD). Two regions of the C<sub>4</sub>-PR specifically interact with the FtHB proteins *in vitro*: an intron sequence within the 5' untranslated leader region and a DNA fragment that is located upstream of the putative TATA-box. To the latter one, the FtHB proteins showed a much lower binding affinity [14]. Homeobox proteins are known to act as transcriptional regulators of eukaryotic gene expression [16-18], and the fact that the FtHB homeobox proteins interact specifically with the PR of the *ppcA1* promoter of *F. trinervia* makes them prime candidates for transcription factors that are involved in the establishment of the C<sub>4</sub>-characteristic expression pattern of the C<sub>4</sub> *ppcA1* gene.

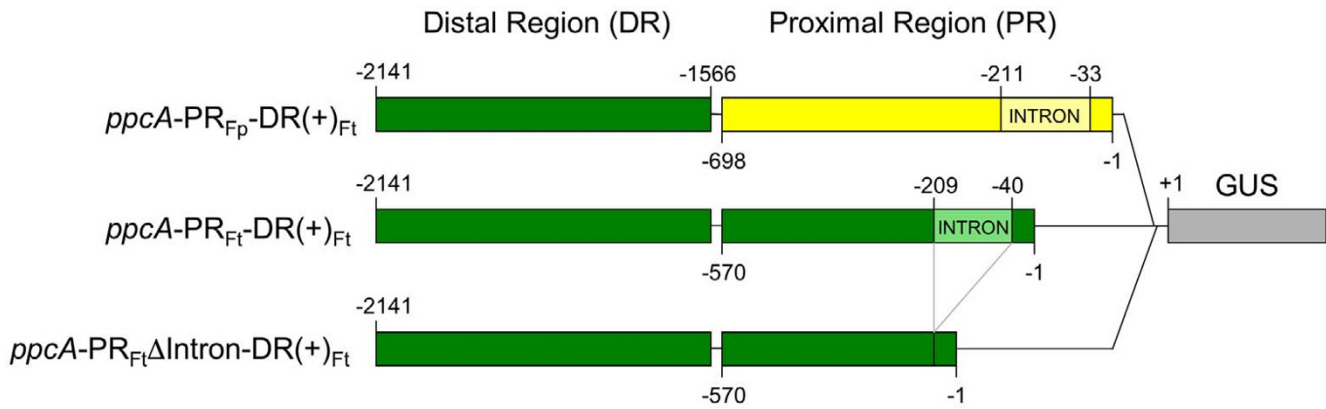
In this study we have investigated the role of the proximal promoter region of the *ppcA1* gene of *F. trinervia* with regard to its high and mesophyll-specific expression by transgenic analyses in the closely related C<sub>4</sub> species *F. bidentis*. We demonstrate that the proximal promoter region of the *ppcA1* gene contains *cis*-regulatory elements that determine promoter strength. Furthermore, we show that the deletion of an intron located in the 5' untranslated segment of *ppcA1* does not alter promoter activity in transgenic *F. bidentis*.

## Results and discussion

### Experimental strategy

We are interested in elucidating the molecular events that are crucial for the evolution of the high and mesophyll-specific expression of the C<sub>4</sub> phosphoenolpyruvate carboxylase gene (*ppcA1*) of the C<sub>4</sub> plant *F. trinervia*. In this study we focus on the proximal promoter region (PR) of the *ppcA1* gene with respect to its function in establishing the C<sub>4</sub>-characteristic expression pattern. We performed a comparative analysis of three different promoter-GUS fusion constructs (Fig. 1) in transgenic *F. bidentis* plants. *F. bidentis* is a close relative to *F. trinervia*, but in contrast to *F. trinervia* this C<sub>4</sub> species is transformable by *Agrobacterium tumefaciens* mediated gene transfer [19] and was therefore chosen for these experiments.

Construct *ppcA*-PR<sub>F<sub>T</sub></sub>-DR(+)<sub>F<sub>T</sub></sub> served as a reference because it was already known from previous experiments that a



**Figure 1**  
Schematic presentation of the promoter-GUS fusion constructs used for the transformation of *Flaveria bidentis* ( $C_4$ ).

combination of the distal (DR) and the proximal (PR) promoter regions was sufficient to direct a high and mesophyll specific expression of a GUS reporter gene in *F. bidentis* [13]. To find out if the PR of the  $C_4$  *ppcA1* promoter contains quantity elements conferring high expression in the mesophyll cells we designed construct *ppcA-PR<sub>Fp</sub>-DR(+)<sub>Ft</sub>*. Here, the  $C_4$ -PR was exchanged for its counterpart from the orthologous *ppcA1* gene of the  $C_3$  species *F. pringlei*. Deletion of the intron sequences in the 5' untranslated segment of promoter construct *ppcA-PR<sub>Ft</sub>-DR(+)<sub>Ft</sub>* resulted in the formation of construct *ppcA-PR<sub>Ft</sub>-ΔIntron-DR(+)<sub>Ft</sub>*. Thereby a putative binding site for the ZF-HD proteins FtHB1 to FtHB4 [14] was removed from the  $C_4$ -PR. Hence, this chimeric promoter-GUS fusion could answer the question whether the intron-located putative binding site of the FtHB proteins is necessary for the establishment of the  $C_4$ -specific *ppcA1* expression pattern.

#### **The proximal region of the *ppcA1* promoter of *F. trinervia* harbours cis-regulatory elements for a high level of PEPC expression in the mesophyll**

Gowik et al. [13] assumed that the PR of the *ppcA1* promoter of *F. trinervia* comprises cis-regulatory determinants conferring high levels of expression in mesophyll cells of  $C_4$  leaves. To examine whether the PR actually harbours such quantity elements we analyzed the GUS expression patterns of constructs *ppcA-PR<sub>Ft</sub>-DR(+)<sub>Ft</sub>* and *ppcA-PR<sub>Fp</sub>-DR(+)<sub>Ft</sub>* (Fig. 1) in transgenic *F. bidentis*.

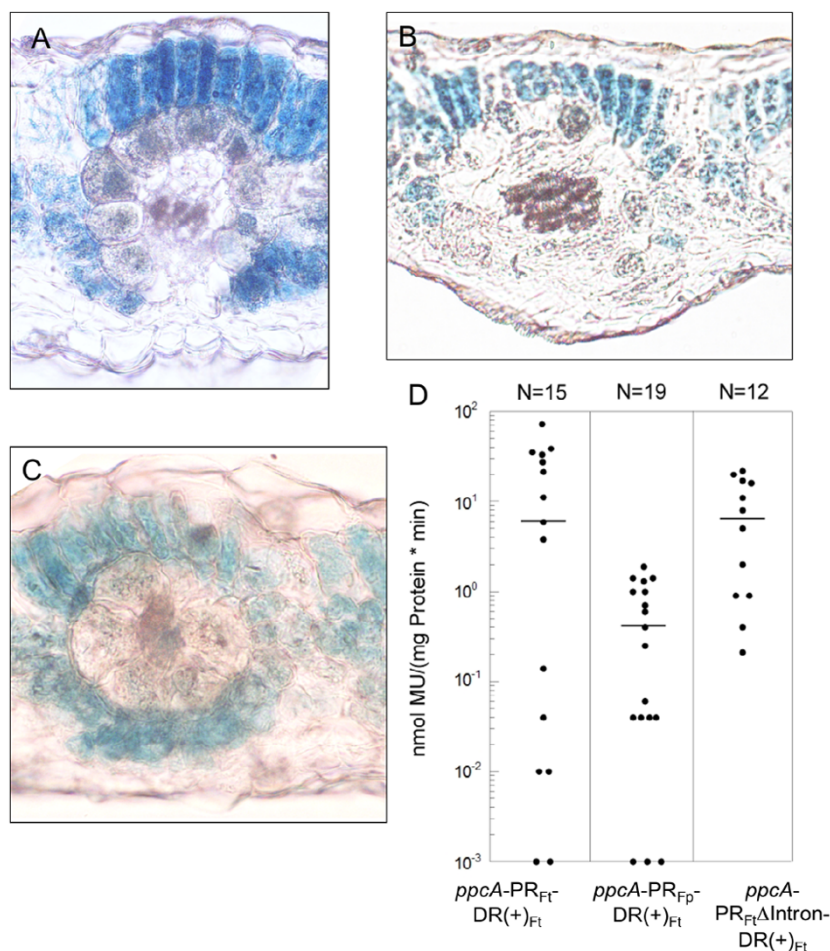
In *F. bidentis* plants that had been transformed with promoter construct *ppcA-PR<sub>Ft</sub>-DR(+)<sub>Ft</sub>*, GUS expression was exclusively detected in the mesophyll cells of the leaves (Fig. 2A). This observation shows that the DR and PR of the *ppcA1* promoter together are sufficient for a high and mesophyll-specific expression of the linked GUS reporter gene and therefore confirms the results obtained by

Gowik et al. [13]. Replacement of the  $C_4$ -PR by the corresponding region from the *ppcA1* promoter of *F. pringlei* (construct *ppcA-PR<sub>Fp</sub>-DR(+)<sub>Ft</sub>*) did not cause any alteration in the cellular GUS expression pattern when compared to *ppcA-PR<sub>Ft</sub>-DR(+)<sub>Ft</sub>*; GUS activity was still restricted to the mesophyll compartment (Fig. 2B). However, both chimeric promoters differed greatly in transcriptional strength. Quantitative GUS assays revealed that promoter activity was decreased by a factor of 15 when the  $C_4$ -PR was substituted for the  $C_3$ -PR (Fig. 2D). This clearly demonstrated that the  $C_4$ -characteristic transcription-enhancing cis-regulatory elements must be located within the proximal region of the *ppcA1* promoter of *F. trinervia*. The low expression level of construct *ppcA-PR<sub>Fp</sub>-DR(+)<sub>Ft</sub>* could be the result of an absence of transcription-enhancing cis-regulatory elements in the  $C_3$ -PR, but it might also be caused by problems in the interaction of the  $C_4$ -DR and the  $C_3$ -PR.

#### **The intron in the $C_4$ -PR is not required for the establishment of a $C_4$ -specific expression pattern of the *ppcA1* gene of *F. trinervia***

The 5' untranslated region of the *ppcA1* gene of *F. trinervia* contains an intron between positions -209 and -40 (+1 refers to the starting point of translation). Introns are of prominent importance for the molecular evolution of eukaryotic genomes by facilitating the generation of new genes via exon-shuffling and by providing the possibility to create multiple proteins from a single gene via alternative splicing [20-22]. Furthermore, it has been shown that introns can affect many different stages of gene expression, including both transcriptional and post-transcriptional mechanisms [22-24].

Here, we wanted to investigate whether the first intron of the *ppcA1* gene of *F. trinervia* is essential for establishing the  $C_4$ -characteristic expression pattern. We therefore



**Figure 2**

(A) to (C): Histochemical localization of GUS activity in leaf sections of transgenic *F. bidentis* plants transformed with constructs  $ppcA-PR_{Ft}-DR(+)_Ft$  (A),  $ppcA-PR_{Fp}-DR(+)_Ft$  (B) or  $ppcA-PR_{Ft}\Delta Intron-DR(+)_Ft$  (C). Incubation times were 6 h (A, C) and 20 h (B). (D): GUS activities in leaves of transgenic *F. bidentis* plants. The numbers of independent transgenic plants tested (N) are indicated at the top of each column. Median values (black lines) of GUS activities are expressed in nanomoles of the reaction product 4-methylumbelliferone (MU) generated per milligram of protein per minute.

deleted the intron sequences from the  $C_4$ -PR in construct  $ppcA-PR_{Fp}-DR(+)_Ft$ , resulting in the formation of construct  $ppcA-PR_{Ft}\Delta Intron-DR(+)_Ft$  (Fig. 1). The histochemical analysis of transgenic *F. bidentis* plants demonstrated that the  $ppcA-PR_{Ft}\Delta Intron-DR(+)_Ft$  promoter was exclusively active in the mesophyll cells of the leaves (Fig. 2C). The quantitative examination of GUS activity (Fig. 2D) also revealed no significant differences between  $ppcA-PR_{Ft}\Delta Intron-DR(+)_Ft$  (6,5 nmol MU/(mg\*min)) and  $ppcA-PR_{Ft}-DR(+)_Ft$  (5,9 nmol MU/(mg\*min)). These data suggest that the 5' located intron of *ppcA1* does not contain any *cis*-regulatory elements that are essential for achieving high mesophyll-specific expression of a reporter gene. Accordingly, the specific binding of the FtHB proteins to this intron that was observed *in vitro* and in yeast one-hybrid experiments [14,15] has no *in planta* relevance

concerning the regulation of *ppcA1* expression in  $C_4$  leaves. However, our results do not necessarily indicate that the intron is completely dispensable for the regulation of *ppcA1* gene expression. It is known that  $C_4$  gene transcription is modulated by various metabolites such as sugar hexoses [25-27], and we cannot exclude that the first intron of the *ppcA1* gene of *F. trinervia* might be involved in the metabolic control of gene expression.

#### Comparison of proximal *ppcA* promoter sequences from different *Flaveria* species

As reported above, *cis*-regulatory elements for leaf-specific enhanced transcription of the *ppcA1* gene of *F. trinervia* could be allocated to the PR of the 5' flanking sequences, but their exact nature and localization was still unclear. To identify potential *cis*-regulatory enhancing elements, a

sequence comparison between the PR of the *ppcA1* gene of *F. trinervia* and equivalent promoter sequences from other *Flaveria* species was performed (Fig. 3). This approach was chosen because it was already known from northern analyses of *ppcA* transcript levels in different *Flaveria* species that *ppcA* RNA amounts in leaves increase gradually from C<sub>3</sub> to C<sub>4</sub> species [28]. This is consistent with the important function of PEPC during C<sub>4</sub> photosynthesis. The C<sub>4</sub>-like species *F. brownii* and *F. vaginata* exhibited *ppcA* RNA levels that were comparable to those of the C<sub>4</sub> plants *F. bidentis* and *F. trinervia*, and even in *F. pubescens*, a C<sub>3</sub>-C<sub>4</sub> intermediate with rather poorly developed C<sub>4</sub>-characteristic traits, *ppcA* transcript accumulation in the leaves was significantly higher than in the C<sub>3</sub> species *F. cronquistii* and *F. pringlei* [28].

Searching for known plant *cis*-regulatory DNA elements in the PLACE database [29] resulted in the identification of two distinct sequence motifs which might be involved in the regulation of *ppcA* expression levels (Fig. 3). Both of them, a putative MYB transcription factor binding site (GTTAGTT, [30]) and a CCAAT box [31], are present in all examined C<sub>3</sub>-C<sub>4</sub>, C<sub>4</sub>-like and C<sub>4</sub> species, but are missing in the two C<sub>3</sub> species (Fig. 3). Thus, these sequences are prime candidates for transcription-enhancing *cis*-regulatory elements. CCAAT boxes are common sequences that are found in the 5' untranslated regions of many eukaryotic genes [32]. They are able to regulate the initiation of transcription by an interaction of CCAAT-binding transcription factors with the basal transcription initiation complex [33]. There is no unifying expression pattern for plant genes containing putative CCAAT promoter elements, indicating that they may play a complex role in regulating plant gene transcription [32]. MYB proteins, on the other hand, comprise one of the largest families of transcription factors in plants, with almost 200 different MYB genes present in the Arabidopsis genome [34-36]. To test the physiological importance of the putative MYB and CCAAT binding sites (that are located within the PR of the *ppcA1* promoter of *F. trinervia*) it will be crucial to inactivate these sequences in construct *ppcA*-PR<sub>Ft</sub>ΔIntron-DR(+)<sub>Ft</sub> by site-directed mutagenesis and to investigate whether this results in a decrease of reporter gene expression in the leaves of transgenic *F. bidentis* plants.

When searching for quantity elements in the PR of the *ppcA1* promoter of *F. trinervia*, one should always keep in mind that high levels of reporter gene expression in the leaf mesophyll require the synergistic action of the distal and proximal promoter regions. The C<sub>4</sub>-PR alone exhibits very low transcriptional activity in all interior leaf cell types of transgenic *F. bidentis* [37], indicating that the *cis*-regulatory elements for enhanced expression are only functional when the C<sub>4</sub>-PR is combined with the cognate C<sub>4</sub>-DR. One may speculate that a strong expression of the

*ppcA1* gene in the mesophyll cells of *F. trinervia* depends on the interaction of *trans*-acting factors which bind to *cis*-regulatory elements within the PR with other transcription factors that are recruited to C<sub>4</sub>-specific *cis*-regulatory determinants in the DR. In the future, further dissection of the C<sub>4</sub>-PR of *F. trinervia* and expression analyses of additional DR-PR combinations from *ppcA* promoters of different *Flaveria* species in transgenic *F. bidentis* will be useful for uncovering the control of *ppcA* expression levels in C<sub>4</sub> leaves.

## Conclusion

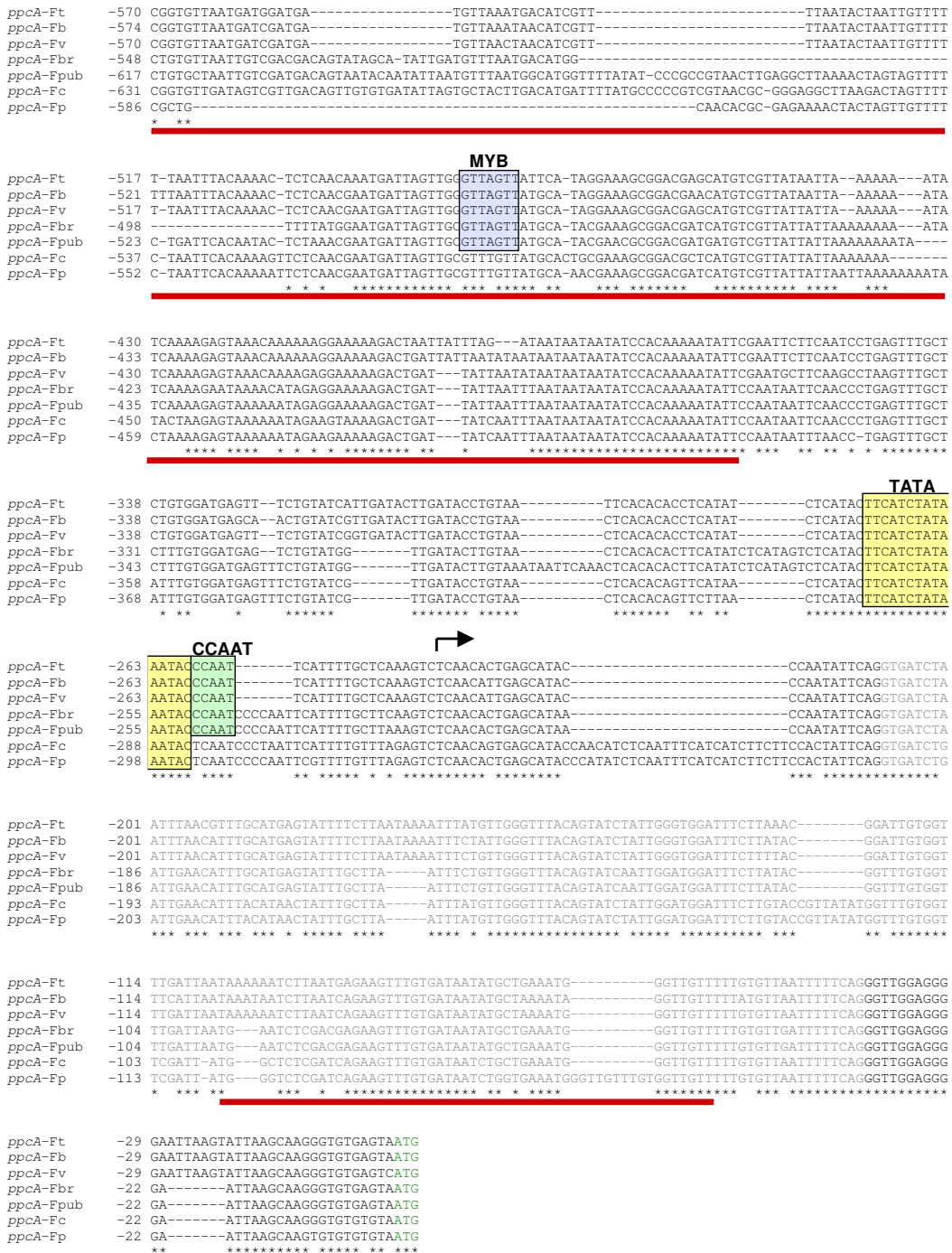
In this study, we have demonstrated that the proximal region (-570 to -1) of the *ppcA1* promoter of *F. trinervia* (C<sub>4</sub>) harbours *cis*-regulatory elements conferring high expression levels in leaf mesophyll cells of transgenic *F. bidentis* (C<sub>4</sub>). It was further demonstrated that the deletion of an intron in the 5' untranslated leader region does not affect the C<sub>4</sub>-specific *ppcA1* expression pattern and strength, indicating that the previously isolated zinc finger-homeobox transcription factors that specifically interact with this intron *in vitro* are not involved in regulating *ppcA1* expression levels. Sequence comparisons resulted in the identification of potential *cis*-regulatory elements in the proximal part of the *ppcA1* promoter that might play a role in controlling *ppcA1* expression quantity. Genetic manipulation of these sequences and subsequent analyses in transgenic *F. bidentis* will clarify whether they are able to direct high *ppcA1* expression levels in C<sub>4</sub> leaves.

## Methods

### Construction of chimeric promoters

DNA manipulations and cloning were performed according to Sambrook and Russell [38]. The construction of the promoter-GUS fusion *ppcA*-PR<sub>Ft</sub>-DR(+)<sub>Ft</sub> has been described in detail [13]. Plasmids *ppcA*-S-Fp[39] and *ppcA*-PR<sub>Ft</sub>-DR(+)<sub>Ft</sub> served as the basis for the production of *ppcA*-PR<sub>Fp</sub>-DR(+)<sub>Ft</sub>. The distal region (-2141 to -1566) of the *ppcA1* promoter of *F. trinervia* was excised from *ppcA*-PR<sub>Ft</sub>-DR(+)<sub>Ft</sub> by digestion with *Xba*I. Insertion of this promoter fragment into *Xba*I-cut *ppcA*-S-Fp resulted in the generation of construct *ppcA*-PR<sub>Fp</sub>-DR(+)<sub>Ft</sub>.

For the production of construct *ppcA*-PR<sub>Ft</sub>ΔIntron-DR(+)<sub>Ft</sub> a part of the *ppcA1* promoter from *F. trinervia* (-570 to -209) was amplified by PCR with primers S-Ft-F (5'-TGCTCTAGACCGGTGTTAATGATGG-3') and S-Ft-R (5'-CTGAATATTGGGTATG-CTCAG-3'). Plasmid *ppcA*-PR<sub>Ft</sub>-DR(+)<sub>Ft</sub> was used as the template for this PCR reaction. The amplified promoter fragment was cut with *Xba*I. The outermost 3' region of the *ppcA1* promoter (-39 to -1) was generated by annealing the two oligonucleotides S-Ft-3'-1 (5'-GGTTGGAGGGGAATTAAGTATTAAGCAAGGGTGTGAGTAC-3') and S-Ft-3'-2 (5'-CCGGGTACTCACACAC-CCTTGCTTAATACTTAATTCCCCTCCAACC-3'). Thereby



**Figure 3**

Nucleotide sequence alignment of the proximal regions of *ppcA* promoters from *F. trinervia* ( $C_4$ , *ppcA*-Ft), *F. bidentis* ( $C_4$ , *ppcA*-Fb), *F. vaginata* ( $C_4$ -like, *ppcA*-Fv), *F. brownii* ( $C_4$ -like, *ppcA*-Fbr), *F. pubescens* ( $C_3$ - $C_4$ , *ppcA*-Fpub), *F. cronquistii* ( $C_3$ , *ppcA*-Fc) and *F. pringlei* ( $C_3$ , *ppcA*-Fp). Identical positions in all *ppcA* sequences are marked by an asterisk. The intron sequences in the 5' untranslated leader regions are marked by grey nucleotides. The start site of the *F. trinervia ppcA* transcript is indicated by an arrow, the TATA-box by a yellow box, the putative MYB-binding site by a blue box, and the CCAAT-sequences by a green box. Fragments of the *F. trinervia ppcA* promoter that interact with the FtHB proteins in the yeast one-hybrid system [14, 15] are marked by red bars. The translational ATG start codon is indicated by green nucleotides.



a *Xma*I-compatible 5' overhang was created next to position -1. The *ppcA*-S-Ft promoter plasmid [39] was digested with *Xba*I and *Xma*I and the released *ppcA1* promoter fragment was removed by agarose gel electrophoresis. The *Xba*I/*Xma*I-cut *ppcA*-S-Ft plasmid was ligated with the two *ppcA1* promoter fragments (-570 to -209/-39 to -1) and the resulting plasmid was named *ppcA*-PR<sub>Ft</sub>ΔIntron. The distal region of the *ppcA1* promoter of *F. trinervia* (-2141 to -1566) was removed from of *ppcA*-PR<sub>Ft</sub>-DR(+)<sub>Ft</sub> by incubation with *Xba*I and inserted into *Xba*I-cut *ppcA*-PR<sub>Ft</sub>ΔIntron. The resulting plasmid was designated *ppcA*-PR<sub>Ft</sub>ΔIntron -DR(+)<sub>Ft</sub>.

### Plant transformation

In all transformation experiments the *Agrobacterium tumefaciens* strain AGL1 was used [40]. The promoter-GUS constructs were introduced into AGL1 by electroporation. The transformation of *Flaveria bidentis* was performed as described by Chitty et al. [19]. The integration of the transgenes into the genome of regenerated *F. bidentis* plants was proved by PCR analyses.

### Measurement of GUS activity and histochemical analysis

*F. bidentis* plants used for GUS analysis were 40 to 50 cm tall and before flower initiation. Fluorometrical quantification of GUS activity in the leaves was performed according to Jefferson et al. [41] and Kosugi et al. [42]. For histochemical analysis of GUS activity the leaves were cut manually with a razorblade and the sections were transferred to incubation buffer (100 mM Na<sub>2</sub>HPO<sub>4</sub>, pH 7.5, 10 mM EDTA, 50 mM K<sub>4</sub>[Fe(CN)<sub>6</sub>], 50 mM K<sub>3</sub>[Fe(CN)<sub>6</sub>], 0.1% (v/v) Triton X-100, 2 mM 5-bromo-4-chloro-3-indolyl-β-D-glucuronid acid). After brief vacuum infiltration the sections were incubated at 37°C for 6 to 20 hrs. After incubation chlorophyll was removed from the tissue by treatment with 70% ethanol.

### Computer analyses

DNA sequence analyses were performed with MacMolly Tetra [43]. The sequence alignments were created with the program DIALIGN 2.2.1 [44]. Sequence data mentioned in this article can be found in GenBank under accession numbers [X64143](#) (*F. trinervia ppcA1*), [X64144](#) (*F. pringlei ppcA1*), [AY297090](#) (*F. vaginata ppcA1*), [AY297089](#) (*F. cronquistii ppcA1*), [AY297087](#) (*F. bidentis ppcA1*), [EF522173](#) (*F. brownii ppcA1*) and [EF522174](#) (*F. pubescens ppcA1*).

### Authors' contributions

SE carried out the histochemical and quantitative GUS assays, the cloning of construct *ppcA*-PR<sub>Ft</sub>ΔIntron-DR(+)<sub>Ft</sub>, the sequence alignments and wrote the manuscript. CZ produced construct *ppcA*-PR<sub>Ft</sub>-DR(+)<sub>Ft</sub>. MK, US and MS performed the transformation of *F. bidentis*. PW coordinated the design of this study and participated in drafting

the manuscript. All authors read and approved the final manuscript.

### Acknowledgements

This work was supported by the Deutsche Forschungsgemeinschaft within the SFB 590 "Inhärente und adaptive Differenzierungsprozesse" at the Heinrich-Heine-Universität Düsseldorf.

### References

- Black CC Jr.: **Photosynthetic carbon fixation in relation to net CO<sub>2</sub> uptake.** *Ann Rev Plant Physiol* 1973, **24**:253-286.
- Hatch MD: **C<sub>4</sub> photosynthesis: a unique blend of modified biochemistry, anatomy and ultrastructure.** *Biochim Biophys Acta* 1987, **895**:81-106.
- Latzko E, Kelly J: **The multi-faceted function of phosphoenolpyruvate carboxylase in C<sub>3</sub> plants.** *Physiol Vég* 1983, **21**:805-815.
- Kellogg EA: **Phylogenetic aspects of the evolution of C<sub>4</sub> photosynthesis.** In *C<sub>4</sub> plant biology* Edited by: Sage RF and Monson RK. San Diego, Academic; 1999:411-444.
- Hermans J, Westhoff P: **Analysis of expression and evolutionary relationships of phosphoenolpyruvate carboxylase genes in Flaveria trinervia (C<sub>4</sub>) and F. pringlei (C<sub>3</sub>).** *Mol Gen Genet* 1990, **224**:459-468.
- Kawamura T, Shigesada K, Toh H, Okumura S, Yanagisawa S, Izui K: **Molecular evolution of phosphoenolpyruvate carboxylase for C<sub>4</sub> photosynthesis in maize: comparison of its cDNA sequence with a newly isolated cDNA encoding an isozyme involved in the anaplerotic function.** *J Biochem (Tokyo)* 1992, **112**:147-154.
- Ernst K, Westhoff P: **The phosphoenolpyruvate carboxylase (ppc) gene family of Flaveria trinervia (C<sub>4</sub>) and F. pringlei (C<sub>3</sub>): molecular characterization and expression analysis of the ppcB and ppcC genes.** *Plant Mol Biol* 1997, **34**:427-443.
- Cretin C, Santi S, Keryer E, Lepiniec L, Tagu D, Vidal J, Gadal P: **The phosphoenolpyruvate carboxylase gene family of Sorghum: promoter structures, amino acid sequences and expression of genes.** *Gene* 1991, **99**:87-94.
- Powell AM: **Systematics of Flaveria (Flaveriinae-Asteraceae).** *Ann Mo Bot Gard* 1978, **65**:590-636.
- McKown AD, Moncalvo JM, Dengler NG: **Phylogeny of Flaveria (Asteraceae) and inference of C<sub>4</sub> photosynthesis evolution.** *Am J Bot* 2005, **11**:1911-1928.
- Westhoff P, Gowik U: **Evolution of c<sub>4</sub> phosphoenolpyruvate carboxylase. Genes and proteins: a case study with the genus Flaveria.** *Ann Bot (Lond)* 2004, **93**:13-23.
- Stockhaus J, Schlue U, Koczor M, Chitty JA, Taylor WC, Westhoff P: **The Promoter of the Gene Encoding the C<sub>4</sub> Form of Phosphoenolpyruvate Carboxylase Directs Mesophyll-Specific Expression in Transgenic C<sub>4</sub> Flaveria spp.** *Plant Cell* 1997, **9**:479-489.
- Gowik U, Burscheidt J, Akyildiz M, Schlue U, Koczor M, Streubel M, Westhoff P: **cis-Regulatory elements for mesophyll-specific gene expression in the C<sub>4</sub> plant Flaveria trinervia, the promoter of the C<sub>4</sub> phosphoenolpyruvate carboxylase gene.** *Plant Cell* 2004, **16**:1077-1090.
- Windhövel A, Hein I, Dabrowa R, Stockhaus J: **Characterization of a novel class of plant homeodomain proteins that bind to the C<sub>4</sub> phosphoenolpyruvate carboxylase gene of Flaveria trinervia.** *Plant Mol Biol* 2001, **45**:201-214.
- Windhövel A: **Trans-regulatorische Faktoren des C<sub>4</sub>-Phosphoenolpyruvat-Carboxylase-Genes aus Flaveria trinervia.** PhD thesis, Heinrich-Heine-Universität Düsseldorf; 1999:116-118.
- Meshi T, Iwabuchi M: **Plant transcription factors.** *Plant Cell Physiol* 1995, **36**:1405-1420.
- Pabo CO, Sauer RT: **Transcription factors: structural families and principles of DNA recognition.** *Annu Rev Biochem* 1992, **61**:1053-1095.
- Chan RL, Gago GM, Palena CM, Gonzalez DH: **Homeoboxes in plant development.** *Biochim Biophys Acta* 1998, **1442**:1-19.
- Chitty JA, Furbank RT, Marshall JS, Chen Z, Taylor WC: **Genetic transformation of the C<sub>4</sub> plant, Flaveria bidentis.** *Plant J* 1994, **6**:949-956.

20. Roy SW, Gilbert W: **The evolution of spliceosomal introns: patterns, puzzles and progress.** *Nat Rev Genet* 2006, **7**:211-221.
21. Patthy L: **Genome evolution and the evolution of exon-shuffling—a review.** *Gene* 1999, **238**:103-114.
22. Le Hir H, Nott A, Moore MJ: **How introns influence and enhance eukaryotic gene expression.** *Trends Biochem Sci* 2003, **28**:215-220.
23. Chang CW, Sun TP: **Characterization of cis-regulatory regions responsible for developmental regulation of the gibberellin biosynthetic gene GAI in Arabidopsis thaliana.** *Plant Mol Biol* 2002, **49**:579-589.
24. Gadea J, Conejero V, Vera P: **Developmental regulation of a cytosolic ascorbate peroxidase gene from tomato plants.** *Mol Gen Genet* 1999, **262**:212-219.
25. Kausch AP, Owen TP Jr., Zachwieja SJ, Flynn AR, Sheen J: **Mesophyll-specific, light and metabolic regulation of the C4 PPCZm1 promoter in transgenic maize.** *Plant Mol Biol* 2001, **45**:1-15.
26. Sheen J: **C4 Gene Expression.** *Annu Rev Plant Physiol Plant Mol Biol* 1999, **50**:187-217.
27. Sheen J: **Metabolic repression of transcription in higher plants.** *Plant Cell* 1990, **2**:1027-1038.
28. Engelmann S, Bläsing OE, Gowik U, Svensson P, Westhoff P: **Molecular evolution of C4 phosphoenolpyruvate carboxylase in the genus Flaveria—a gradual increase from C3 to C4 characteristics.** *Planta* 2003, **217**:717-725.
29. Higo K, Ugawa Y, Iwamoto M, Korenaga T: **Plant cis-acting regulatory DNA elements (PLACE) database: 1999.** *Nucleic Acids Res* 1999, **27**:297-300.
30. Chakravarthy S, Tuori RP, D'Ascenzo MD, Fobert PR, Despres C, Martin GB: **The tomato transcription factor Pti4 regulates defense-related gene expression via GCC box and non-GCC box cis elements.** *Plant Cell* 2003, **15**:3033-3050.
31. Rieping M, Schoffl F: **Synergistic effect of upstream sequences, CCAAT box elements, and HSE sequences for enhanced expression of chimaeric heat shock genes in transgenic tobacco.** *Mol Gen Genet* 1992, **231**:226-232.
32. Edwards D, Murray JA, Smith AG: **Multiple genes encoding the conserved CCAAT-box transcription factor complex are expressed in Arabidopsis.** *Plant Physiol* 1998, **117**:1015-1022.
33. Nussinov R: **The eukaryotic CCAAT and TATA boxes, DNA spacer flexibility and looping.** *J Theor Biol* 1992, **155**:243-270.
34. Romero I, Fuertes A, Benito MJ, Malpica JM, Leyva A, Paz-Ares J: **More than 80R2R3-MYB regulatory genes in the genome of Arabidopsis thaliana.** *Plant J* 1998, **14**:273-284.
35. Riechmann JL, Heard J, Martin G, Reuber L, Jiang C, Keddie J, Adam L, Pineda O, Ratcliffe OJ, Samaha RR, Creelman R, Pilgrim M, Broun P, Zhang JZ, Ghandehari D, Sherman BK, Yu G: **Arabidopsis transcription factors: genome-wide comparative analysis among eukaryotes.** *Science* 2000, **290**:2105-2110.
36. Yanhui C, Xiaoyuan Y, Kun H, Meihua L, Jigang L, Zhaofeng G, Zhiqiang L, Yunfei Z, Xiaoxiao W, Xiaoming Q, Yunping S, Li Z, Xiaohui D, Jingchu L, Xing-Wang D, Zhangliang C, Hongya G, Li-Jia Q: **The MYB transcription factor superfamily of Arabidopsis: expression analysis and phylogenetic comparison with the rice MYB family.** *Plant Mol Biol* 2006, **60**:107-124.
37. Akyildiz M, Gowik U, Engelmann S, Koczor M, Streubel M, Westhoff P: **Evolution and Function of a cis-Regulatory Module for Mesophyll-Specific Gene Expression in the C4 Dicot Flaveria trinervia.** *Plant Cell* 2007:doi/10.1105/tpc.107.053322.
38. Sambrook J, Russell DW: **Molecular Cloning: A Laboratory Manual.** Cold Spring Harbor Laboratory Press.; 2001.
39. Stockhaus J, Poetsch W, Steinmuller K, Westhoff P: **Evolution of the C4 phosphoenolpyruvate carboxylase promoter of the C4 dicot Flaveria trinervia: an expression analysis in the C3 plant tobacco.** *Mol Gen Genet* 1994, **245**:286-293.
40. Lazo GR, Stein PA, Ludwig RA: **A DNA transformation-competent Arabidopsis genomic library in Agrobacterium.** *Biotechnology (N Y)* 1991, **9**:963-967.
41. Jefferson RA, Kavanagh TA, Bevan MW: **GUS fusions: beta-glucuronidase as a sensitive and versatile gene fusion marker in higher plants.** *Embo J* 1987, **6**:3901-3907.
42. Kosugi S, Ohashi Y, Nakajima K, Arai Y: **An improved assay for beta-glucuronidase in transformed cells: Methanol almost completely suppresses a putative endogenous beta-glucuronidase activity.** *Plant Sci* 1990, **70**:133-140.
43. Schoeneberg U, Vahrson W, Priedemuth U, Wittig B: **Analysis and interpretation of DNA and protein sequences using MacMolly Tetra.** Bielefeld, Germany, KAROL-Verlag Bornemann; 1994.
44. Morgenstern B: **DIALIGN: multiple DNA and protein sequence alignment at BiBiServ.** *Nucleic Acids Res* 2004, **32**:W33-6.

Publish with **BioMed Central** and every scientist can read your work free of charge

"BioMed Central will be the most significant development for disseminating the results of biomedical research in our lifetime."

Sir Paul Nurse, Cancer Research UK

Your research papers will be:

- available free of charge to the entire biomedical community
- peer reviewed and published immediately upon acceptance
- cited in PubMed and archived on PubMed Central
- yours — you keep the copyright

Submit your manuscript here:  
[http://www.biomedcentral.com/info/publishing\\_adv.asp](http://www.biomedcentral.com/info/publishing_adv.asp)

