

Betalain production is possible in anthocyanin-producing plant species given the presence of DOPA-dioxygenase and L-DOPA

Harris *et al.*

RESEARCH ARTICLE

Open Access

# Betalain production is possible in anthocyanin-producing plant species given the presence of DOPA-dioxygenase and L-DOPA

Nilangani N Harris<sup>1,4</sup>, John Javellana<sup>1</sup>, Kevin M Davies<sup>1</sup>, David H Lewis<sup>1</sup>, Paula E Jameson<sup>2</sup>, Simon C Deroles<sup>1</sup>, Kate E Calcott<sup>1,3</sup>, Kevin S Gould<sup>3</sup> and Kathy E Schwinn<sup>1\*</sup>

## Abstract

**Background:** Carotenoids and anthocyanins are the predominant non-chlorophyll pigments in plants. However, certain families within the order Caryophyllales produce another class of pigments, the betalains, instead of anthocyanins. The occurrence of betalains and anthocyanins is mutually exclusive. Betalains are divided into two classes, the betaxanthins and betacyanins, which produce yellow to orange or violet colours, respectively. In this article we show betalain production in species that normally produce anthocyanins, through a combination of genetic modification and substrate feeding.

**Results:** The biolistic introduction of DNA constructs for transient overexpression of two different dihydroxyphenylalanine (DOPA) dioxygenases (DODs), and feeding of DOD substrate (L-DOPA), was sufficient to induce betalain production in cell cultures of *Solanum tuberosum* (potato) and petals of *Antirrhinum majus*. HPLC analysis showed both betaxanthins and betacyanins were produced. Multi-cell foci with yellow, orange and/or red colours occurred, with either a fungal DOD (from *Amanita muscaria*) or a plant DOD (from *Portulaca grandiflora*), and the yellow/orange foci showed green autofluorescence characteristic of betaxanthins. Stably transformed *Arabidopsis thaliana* (*arabidopsis*) lines containing *35S: AmDOD* produced yellow colouration in flowers and orange-red colouration in seedlings when fed L-DOPA. These tissues also showed green autofluorescence. HPLC analysis of the transgenic seedlings fed L-DOPA confirmed betaxanthin production.

**Conclusions:** The fact that the introduction of DOD along with a supply of its substrate (L-DOPA) was sufficient to induce betacyanin production reveals the presence of a background enzyme, possibly a tyrosinase, that can convert L-DOPA to *cyclo*-DOPA (or dopaxanthin to betacyanin) in at least some anthocyanin-producing plants. The plants also demonstrate that betalains can accumulate in anthocyanin-producing species. Thus, introduction of a DOD and an enzyme capable of converting tyrosine to L-DOPA should be sufficient to confer both betaxanthin and betacyanin production to anthocyanin-producing species. The requirement for few novel biosynthetic steps may have assisted in the evolution of the betalain biosynthetic pathway in the Caryophyllales, and facilitated multiple origins of the pathway in this order and in fungi. The stably transformed *35S: AmDOD* *arabidopsis* plants provide material to study, for the first time, the physiological effects of having both betalains and anthocyanins in the same plant tissues.

\* Correspondence: [Kathy.Schwinn@plantandfood.co.nz](mailto:Kathy.Schwinn@plantandfood.co.nz)

<sup>1</sup>New Zealand Institute for Plant & Food Research Limited, Private Bag 11-600, Palmerston North, New Zealand

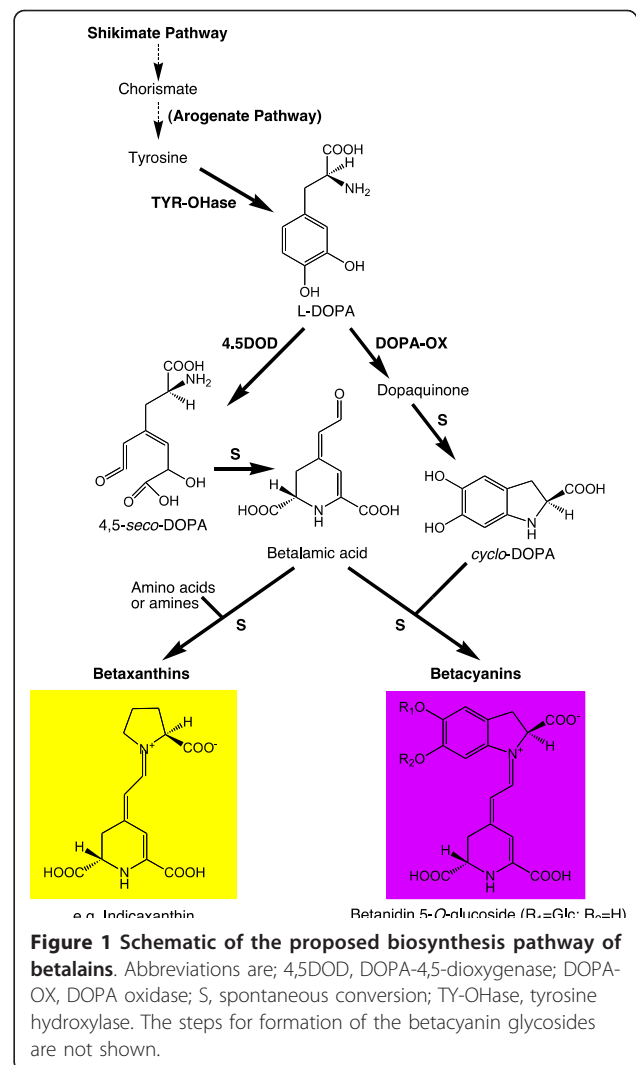
Full list of author information is available at the end of the article

## Background

The variety of colours observed in flowers, fruits and vegetative tissues in plants are due to the presence of chromogenic plant secondary metabolites [1,2]. These pigments serve diverse functions including photosynthesis and the protection of the photosynthetic machinery, attraction of pollinators and seed dispersers, and protection against biotic and abiotic stresses [1,3]. In addition to their biological functions, plant pigments are also of much interest regarding their possible beneficial effects on human health, their use as natural colorants and their aesthetic value in ornamental and food crops [4]. Non-chlorophyll plant pigments predominantly belong to two groups: flavonoids and carotenoids. Within the flavonoids, anthocyanins are the most significant type, providing a range of colours including orange, red, pink, mauve, purple and blue. However, in certain families within the order Caryophyllales, another class of pigments, the betalains, replaces the anthocyanins [2,5,6]. Betalains are only present in the order Caryophyllales and some fungi. They occur in most families of the Caryophyllales, but species of at least two families accumulate anthocyanin pigments instead [7]. The basis of this differentiation is unknown, but may represent an initial evolution of betalain biosynthesis in an ancestor of the core Caryophyllales and then its subsequent loss on different occasions [7].

No plant has yet been found that produces both betalain and anthocyanin pigments [5-8]. This mutually exclusive nature of the betalain and anthocyanin production in the plant kingdom is a curious phenomenon and the evolutionary and biochemical mechanisms for this restriction are unknown [5-7].

There are two major types of betalains, the red-purple betacyanins and the yellow/orange betaxanthins, both of which accumulate in the vacuole. The betaxanthins also emit green autofluorescence, which is not seen with the betacyanins [9-11]. While the production of flavonoids and carotenoids has been extensively studied and metabolically engineered in a variety of species, betalain biosynthesis has yet to be fully characterised [1,2]. The betalain biosynthetic pathway is relatively simple with putatively only a few reactions that are enzyme catalysed (Figure 1). The initial biosynthetic step is the hydroxylation of tyrosine to L-3,4-dihydroxyphenylalanine (DOPA), attributed to the activity of a tyrosinase, although the exact role (if any) of tyrosinase in betalain synthesis has yet to be resolved [5,6,12,13]. Cleavage of the cyclic ring of L-DOPA by DOPA-4,5-dioxygenase (DOD) forms an unstable *seco*-DOPA intermediate, which is thought to spontaneously convert to betalamic acid. The formation of betaxanthins occurs spontaneously from the condensation of betalamic acid with



amines/amino acids [14], probably in the vacuole. The classic model of betacyanin biosynthesis involves the condensation of betalamic acid with (most commonly) *cyclo*-DOPA, which again is a likely spontaneous step. In this model, *cyclo*-DOPA is formed from L-DOPA through an oxidation reaction that also has been attributed to tyrosinase activity [5,6,13]. The conversion proceeds via an unstable dopaquinone intermediate, which spontaneously cyclizes to form *cyclo*-DOPA. Betacyanins are generally *O*-glycosylated (at the C-5 or C-6) and frequently subsequently acylated. The aglycone product of betalamic acid and *cyclo*-DOPA condensation is termed betanidin and the 5-*O*-glucosylated form betanin, as with the anthocyanidin/anthocyanin convention. The timing of the glycosylation, regarding whether it occurs on *cyclo*-DOPA or betanidin, has been debated [15,16].

The only betalain biosynthetic enzymes characterised at the molecular level to date are for DOD and some of

the glycosyltransferase activities. The first plant *DOD* gene characterised was from *Portulaca grandiflora*, and it defined a novel plant gene family of non-haem dioxygenases [2,11]. The plant dioxygenase is phylogenetically unrelated to *DOD* from the fungi *Amanita muscaria*, although the fungal sequence can complement betalain production in flowers of a *P. grandiflora dod* mutant [17]. The plant *DOD* carries out only the 4,5-cleavage of DOPA to yield betalamic acid, whereas the fungal enzyme can also conduct 2,3-extradiol cleavage of DOPA, yielding the yellow pigment muscaflavin [18]. Three cDNAs encoding proteins with relevant *O*-glycosylation activity have been identified, two that use both betanidin and flavonoids as substrates [19,20] and one that uses *cyclo*-DOPA [16].

Studies seeking to understand the genetic basis of the mutual exclusion of betalains and anthocyanins have focused on establishing the extent of the retention of the anthocyanin biosynthetic pathway in betalain producing species [21-23]. Flavonoids are present in betalain producing species, including flavonols and proanthocyanidins, and functional genes have been identified for the flavonoid biosynthetic enzymes chalcone synthase, dihydroflavonol 4-reductase and anthocyanidin synthase [21-23]. This suggests that the lack of anthocyanin production in betalain-producing species may be due to a lack of transcriptional activation of all the necessary biosynthetic genes [7,23], although a hypothesis based on repressive interaction between anthocyanin and betalain metabolites and the biosynthetic enzymes has also been suggested [24].

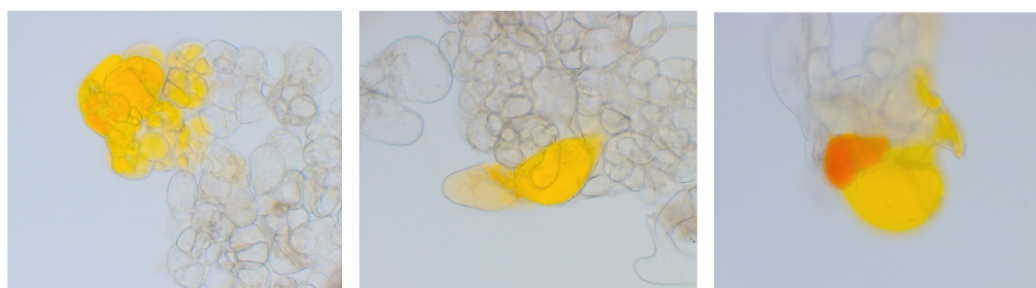
Our aim in this study was to determine whether betalain production is possible in anthocyanin-producing species. Using genetic transformation and feeding of pathway intermediates, we have examined what the minimum number is of biosynthetic steps that must be introduced into an anthocyanin-producing species to allow betalain production, and whether betalains can accumulate to significant levels in such species. Stable or transient transgene expression was used with *DOD* cDNAs from the fungus *A. muscaria* and the plant *P. grandiflora*, introduced into *Arabidopsis thaliana* (*arabidopsis*) plants, *Solanum tuberosum* (potato) cell cultures and *Antirrhinum majus* (*antirrhinum*) petals. These are representatives of the asterids and rosids, the two major clades of eudicots.

## Results and discussion

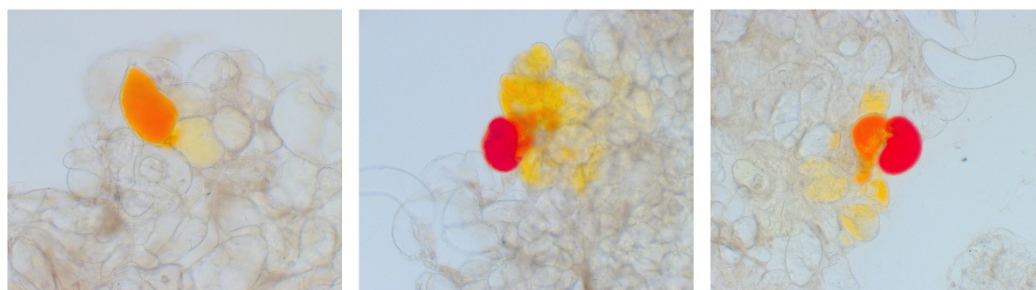
### Betalain biosynthesis in potato cell cultures by transient expression of *DOD*

Potato cell suspension cultures were transformed using particle bombardment with 35S: *green fluorescent protein* (*GFP*) or constructs having either the *P. grandiflora DOD* cDNA (35S: *PgDOD*) or the *A. muscaria DOD* (35S: *AmDOD*) driven by the CaMV35S promoter, and examined for betalain production following feeding with L-DOPA. In cells transformed with 35S: *GFP*, *GFP* was detected in the cells 24 h after biolistic transformation but no pigmentation was apparent (data not shown). In the cells transformed with either 35S: *PgDOD* or 35S: *AmDOD* and fed L-DOPA, pigmented multi-celled clusters were apparent within 24 h post-bombardment (Figure 2). Both 35S: *AmDOD* and 35S: *PgDOD* resulted

35S:*PgDOD*



35S:*AmDOD*



**Figure 2** Pigment production in potato cell suspension cultures biolistically transformed with 35S: *PgDOD* or 35S: *AmDOD* and fed 10 mM L-DOPA. Examples are shown of cells with the resulting yellow to orange (35S: *PgDOD*) or yellow to red (35S: *AmDOD*) pigmentation.

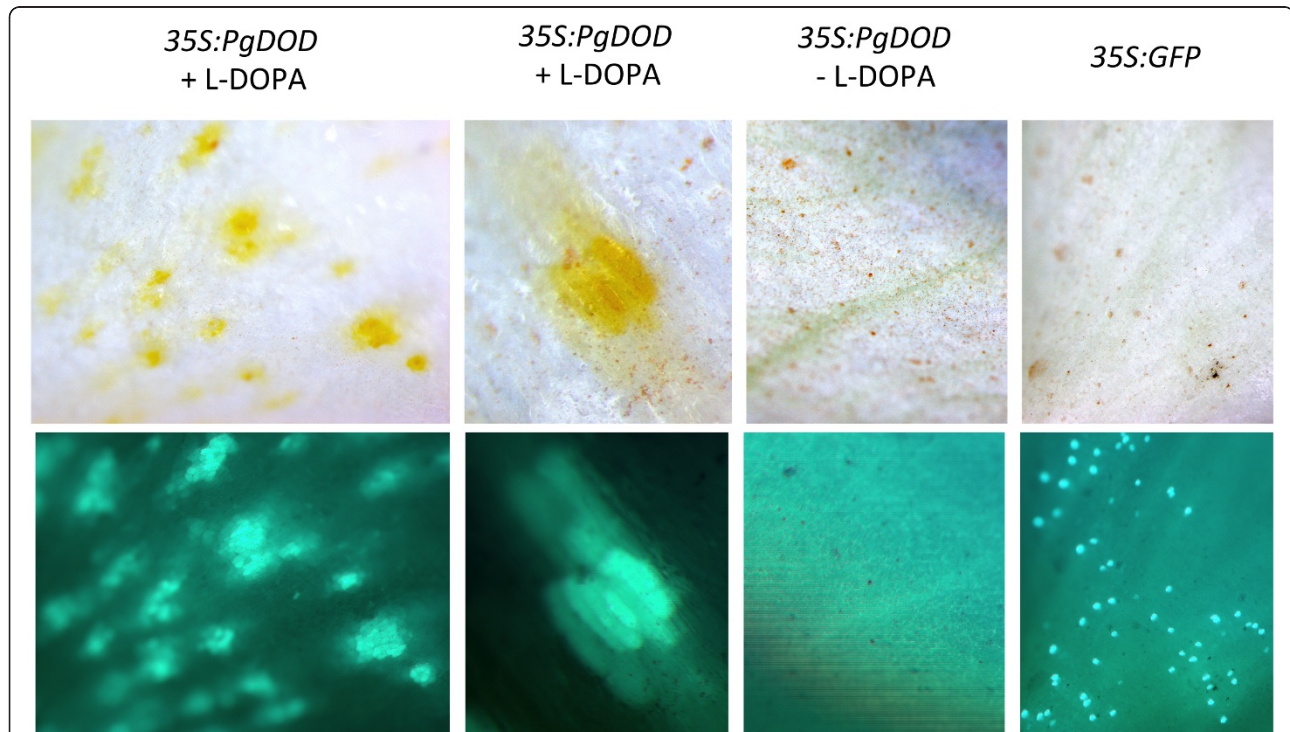
in yellow and orange cell clusters. In addition, *35S:AmDOD* also produced cells with red pigmentation. The yellow and red pigmentation suggests that betaxanthin and betacyanin production, respectively, had been conferred to the cells. Indeed, observation of the yellow pigmented areas under blue light showed the autofluorescence characteristic of betaxanthin pigments (data not shown).

#### Betalain biosynthesis in antirrhinum petals by transient expression of *DOD*

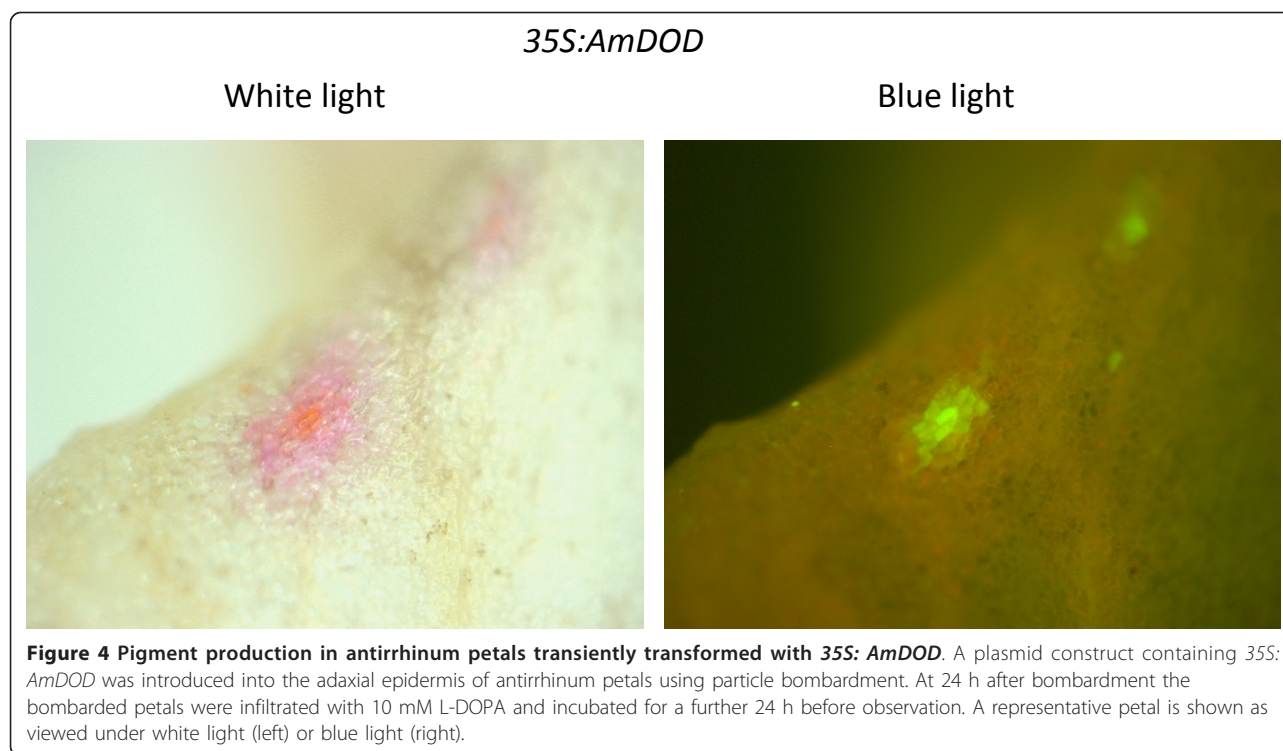
The adaxial surface of dorsal petals of antirrhinum was transformed using particle bombardment with *35S:PgDOD* and examined for betalain production with or without infiltration of the petals with L-DOPA. Petals biolistically transformed with *35S:GFP* vector and fed with L-DOPA were used as an additional control. Antirrhinum lines having mutations in flavonoid production were used to provide anthocyanin-free petal backgrounds upon which to observe any pigment production. No pigments were visible in *35S:GFP* shot tissue or in petals transformed with *35S:PgDOD* but not infiltrated with L-DOPA, although positive GFP foci were apparent (Figure 3). The *35S:PgDOD* petals that were

infiltrated with L-DOPA had numerous, multi-celled yellow foci 24 h after infiltration (48 h after bombardment) (Figure 3), indicating betaxanthin production. The yellow foci did indeed have the strong green autofluorescence typical of betaxanthins when observed under blue light (Figure 3). When using the *35S:AmDOD* construct, both yellow/orange and pink/red multi-celled foci occurred (Figure 4), although the pink/red foci were present only inconsistently (data not shown). Similarly, pink foci were sometimes present in some replicate experiments using *35S:PgDOD* (data not shown). The pink colouration indicates betacyanin production. The pink regions did not show strong autofluorescence while the central cells did, indicating possible betacyanin accumulation around a central region containing both betacyanins and betaxanthins.

HPLC analysis (LC-DAD) was used to examine the nature of the yellow pigments produced following bombardment with *35S:PgDOD*. The ridge region of the petals was chosen for HPLC analysis, to ensure a similar region was sampled in each case. Betaxanthins and betacyanins have absorbance maxima at around 470 nm and 538 nm, respectively [25], and peak profiles were examined at these two wavelengths (Figure 5). No betalain-



**Figure 3** Betaxanthin production in antirrhinum petals transiently transformed with *35S:PgDOD* or *35S:GFP*. Plasmid constructs containing *35S:PgDOD* or *35S:GFP* were introduced into the adaxial epidermis of antirrhinum petals using particle bombardment. At 24 h after bombardment some *35S:PgDOD* bombarded petals were infiltrated with 10 mM L-DOPA, while the other petals were infiltrated with water, and incubated for a further 24 h before observation. Representative petals are shown as viewed under white light (upper row) or blue light (lower row). The yellow, multi-cell foci for *35S:PgDOD* petals fed with L-DOPA are shown at two magnifications.

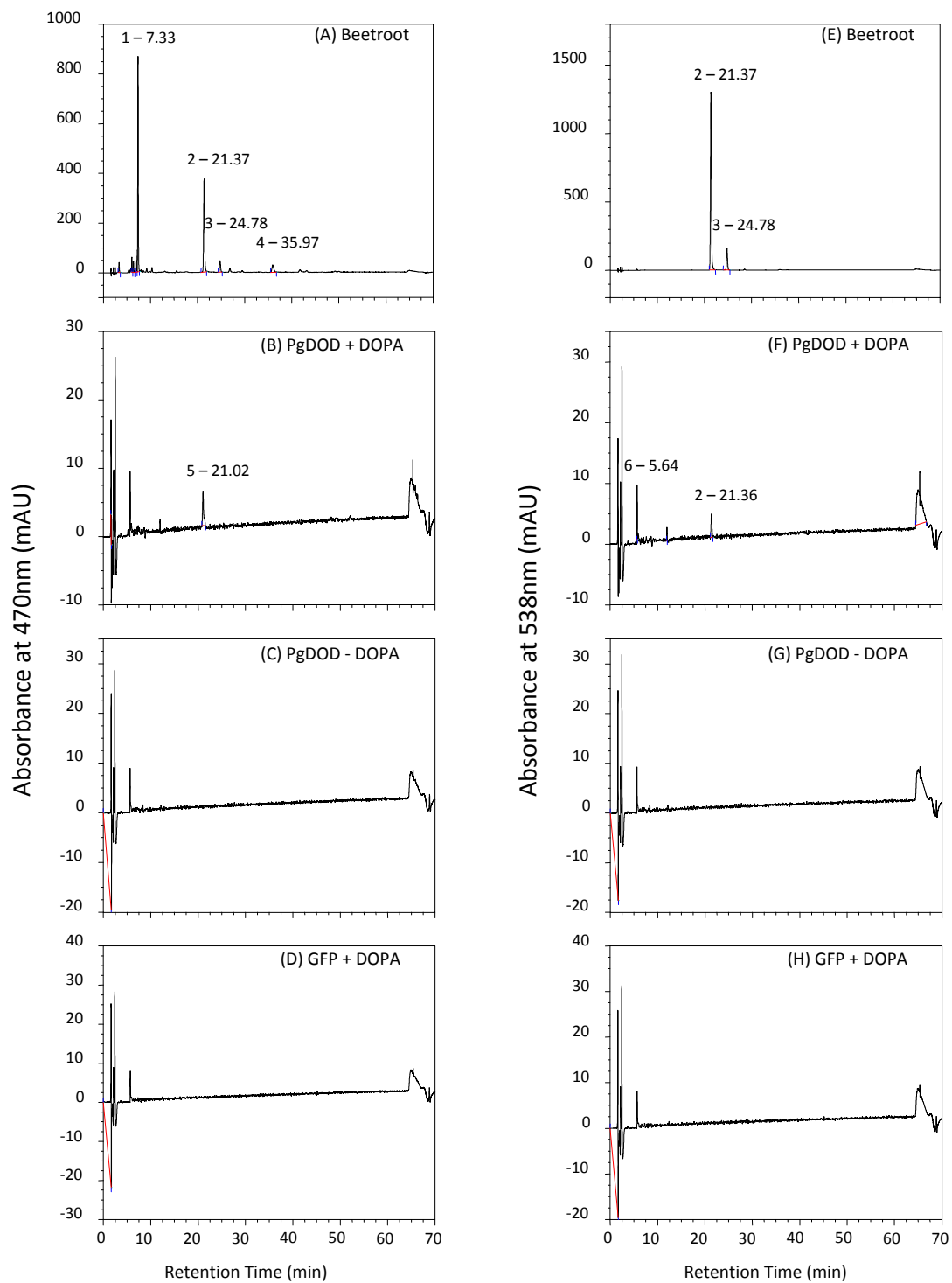


related peaks were detected with HPLC analysis of the 35S: *GFP* petal tissue or with 35S: *PgDOD* petals that were not infiltrated with L-DOPA. Petals transformed with 35S: *PgDOD* and fed L-DOPA showed distinct peaks at both 470 nm and 538 nm. The compounds represented by the peaks were putatively identified by comparison of HPLC retention times and spectral data against those of a standard extract (from beetroot, Figure 5A and 5E) and reported spectral data [14,25,26]. The beetroot extract showed the expected peaks for the betaxanthin vulgaxanthin I (Peak 1) and the betacyanins betanin (betanidin 5-*O*-glucoside, Peak 2) and isobetanin (Peak 3) (Table 1). The 35S: *PgDOD* L-DOPA fed samples showed a small amount of betanin (Peak 2; Figure 5F) and an unknown peak (Peak 5, 21.02 min; Figure 5B) that was possibly dopaxanthin (Table 1). Generally, the chromatograms at 538 nm showed the same patterns as at 470 nm except that vulgaxanthin I (Peak 1) and the putative dopaxanthin peak (Peak 5) were no longer detected, providing further evidence that Peak 5 is indeed a betaxanthin.

Antirrhinum can produce yellow pigments in the petal face and throat naturally. These pigments are aurones and a product of the flavonoid pathway. In addition to the spectral data (aurones have spectra maxima in the range 390-430 nm), there is other evidence that the yellow pigments observed following 35S: *PgDOD* bombardment and L-DOPA feeding are unlikely to be aurones; aurones are not present normally in the dorsal petals of

the antirrhinum line used (JI19), and no yellow pigments were observed without infiltration with L-DOPA.

Despite a lack of the red colouration seen following bombardment, the 35S: *PgDOD* antirrhinum samples analysed by HPLC did indeed contain small amounts of betacyanin (betanin; Figure 5F). Also, the presence of betacyanin is inferred in the 35S: *AmDOD* expressing potato cells, given the red colouration of some foci. How betacyanin production can occur in non-betalain species through the introduced DOD acting on the supplied L-DOPA is not clear. The product of DOD action on L-DOPA is betalamic acid (Figure 1). Betaxanthins can be produced by spontaneous reactions of the DOD reaction end-product, betalamic acid, with amino acids or amines. However, betacyanin formation requires *cyclo*-DOPA, the formation of which from L-DOPA by oxidation has been attributed to the activity of a tyrosinase [6]. As tyrosinases are frequently present in plant cells it is possible that an endogenous enzyme with activity on L-DOPA occurs in most non-betalain producing species. Alternatively, betacyanin could be formed from endogenous tyrosinase activity on dopaxanthin [12]. The betacyanin detected in antirrhinum petals was likely betanin, an *O*-glycosylated betacyanin. This indicates that endogenous glycosyltransferases can act on the novel betacyanin substrates. Two *O*-glycosyltransferases have been characterized with activity on betanidin [19,20]. Both show sequence similarity to the *O*-glycosyltransferases involved in anthocyanin biosynthesis, and indeed, the betanidin



**Figure 5** HPLC analysis of pigments produced in antirrhinum petals transiently transformed with *35S: PgDOD* or *35S: GFP*. HPLC analysis was conducted on the *35S: PgDOD* and *35S: GFP* antirrhinum petal material shown in Figure 3. Absorbance was monitored at 470 nm for betaxanthins or 538 nm for betacyanins. Chromatograms are for extracts from beetroot root (A and E), *35S: PgDOD* antirrhinum infiltrated with L-DOPA (B and F), *35S: PgDOD* antirrhinum without L-DOPA infiltration (C and G), *35S: GFP* antirrhinum infiltrated with L-DOPA (D and H). The retention times of the major peaks are shown, and these were tentatively identified as per Table 1.

**Table 1 Retention times and spectral maxima of the major betalain pigments detected in beetroot tissue (Peaks 1 to 3) or antirrhinum petal tissue bombarded with 35S: PgdDOD and infiltrated with L-DOPA (Peaks 4 and 5).**

Peak <sup>a</sup>	Betalain	Retention Time (min)	$\lambda_{\max}$ (nm)
1	Vulgaxanthin I	7.33	259, 469
2	Betanin	21.37	269, 534
3	Isobetanin	24.78	269, 534
4	Unknown betaxanthin	35.97	265, 464
5	Unknown betaxanthin <sup>b</sup>	21.02	241, 470

HPLC absorbance traces are shown in Figure 4

<sup>a</sup>The peak present at 5.64 min in antirrhinum tissue was present in all samples, both control and transgenic; its spectral data is not consistent with that of betalain pigments therefore it was excluded from the analysis.

<sup>b</sup>Possibly dopaxanthin

5-O-glucosyltransferase has activity with both betacyanins and flavonoids [20]. Thus, it may be the case that the endogenous flavonoid O-glucosyltransferases of antirrhinum are also able to act on betanidin (and/or cyclo-DOPA).

Biolistic transformation of both potato and antirrhinum with either 35S: PgdDOD or 35S: AmDOD resulted in multi-celled foci producing betalains. It is unlikely that this would be due to movement of the DOD enzyme between cells as, similar to GFP (Figure 3), it is too large for passive intercellular movement. As the final betalain pigments accumulate within the vacuole, this suggests that some of the precursors migrate between cells. This is similar to the results of Mueller *et al.* [17] when they biolistically introduced AmDOD into different *P. grandiflora* mutant backgrounds. Single coloured cells seen within 18 h after bombardment developed into multi-cell foci by 48 h after bombardment [17]. It was suggested that betalains could have diffused through plasmodesmata to neighbouring cells. However, in contrast to these results, when complementation of the *P. grandiflora dod* mutant was conducted with PgdDOD, only single cell foci occurred [11]. Furthermore, cell-specific betalain production is commonly observed in plants, such as in the epidermal cells of petals. In the case of our results, it is possible that high L-DOPA levels produced from tissue feeding allowed the movement of betalamic acid not just to the vacuole but also to neighbouring cells.

#### Betalain pigment production by stable transformation of Arabidopsis

Stably transformed arabidopsis plants were produced through *Agrobacterium*-mediated transformation with 35S: AmDOD. T2 generation seedlings were checked for expression of the 35S: AmDOD transgene (Additional file 1) and selected lines examined for their potential to

produce betalains when fed with L-DOPA. When whole seedlings were fed L-DOPA, novel pigment production was visible within 12 h after feeding (Figure 6A-C), including in the etiolated root tissues and the hypocotyls. The colour ranged from pale yellow through to orange and dark orange-red. Under blue light, the pigments showed the green autofluorescence characteristic of betaxanthins (Figure 6D, E). When detached inflorescences from mature plants were fed L-DOPA pale yellow pigmentation was seen in all tissues 24 h after feeding, including the stem, petals and siliques, and this was accompanied by strong autofluorescence (Figure 7). 35S: AmDOD seedlings or inflorescences not fed L-DOPA did not produce visible pigments after treatment and did not show significant autofluorescence under blue light (Figure 6F, G and Figure 7).

HPLC analysis was used to examine the nature of the pigments produced following L-DOPA feeding of the 35S: AmDOD arabidopsis. Seedlings were fed L-DOPA and the entire seedling sampled for chemical analysis. HPLC analysis revealed several peaks present in the L-DOPA fed 35S: AmDOD tissue but not in the control tissue (Figure 8). Four of these peaks were present in sufficient quantity to confirm that their spectral data and retention times were those characteristic of betaxanthins (Table 2).

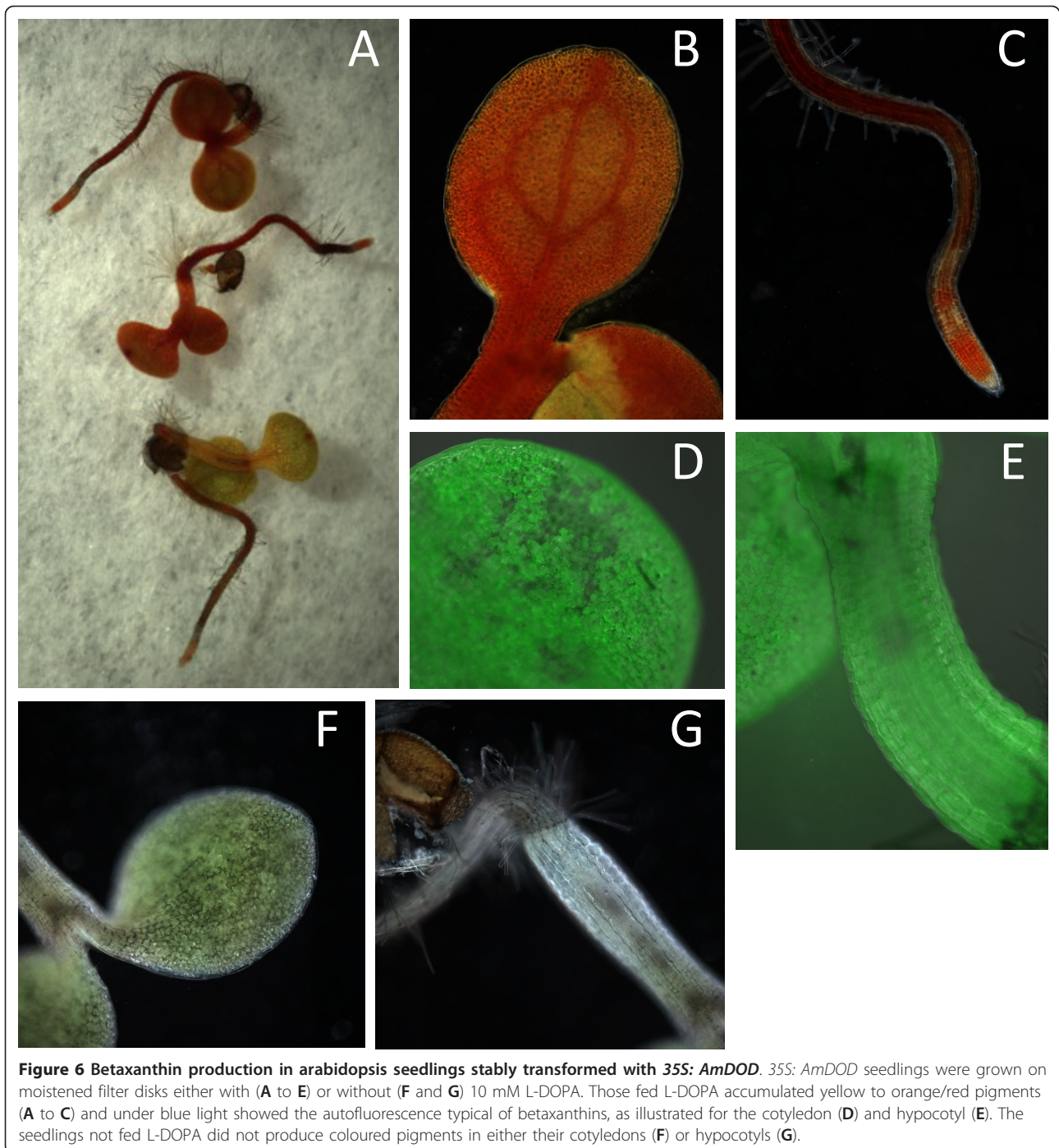
The presence of betaxanthins matched the strong autofluorescence observed in the seedlings under blue light. The failure to detect the presence of betacyanin was a surprise given the orange/red colouration of the seedlings and the ability of DOD to confer both betaxanthin and betacyanin production when transiently expressed in antirrhinum petals. In accordance with the HPLC results, while the seedlings did have an orange-red colour that would suggest betacyanin production, the autofluorescence indicated strong betaxanthin presence. Furthermore, the fed inflorescences of the mature plants did not have a red colouration. Thus it appears that a high level of betaxanthin production in the particular background colouration of the seedlings resulted in the orange-red colour. It is unlikely that anthocyanins are contributing to the orange-red colouration of seedlings, as L-DOPA treatment of non-transgenic seedlings did not induce visible pigment production.

#### Conclusions

We report here methods to enable production of high-levels of betalains in the non-betalain, anthocyanin-producing, species antirrhinum, arabidopsis and potato, which represent both of the major clades of the eudicots. Betalains are not normally observed in anthocyanin-producing species, for unknown reasons.

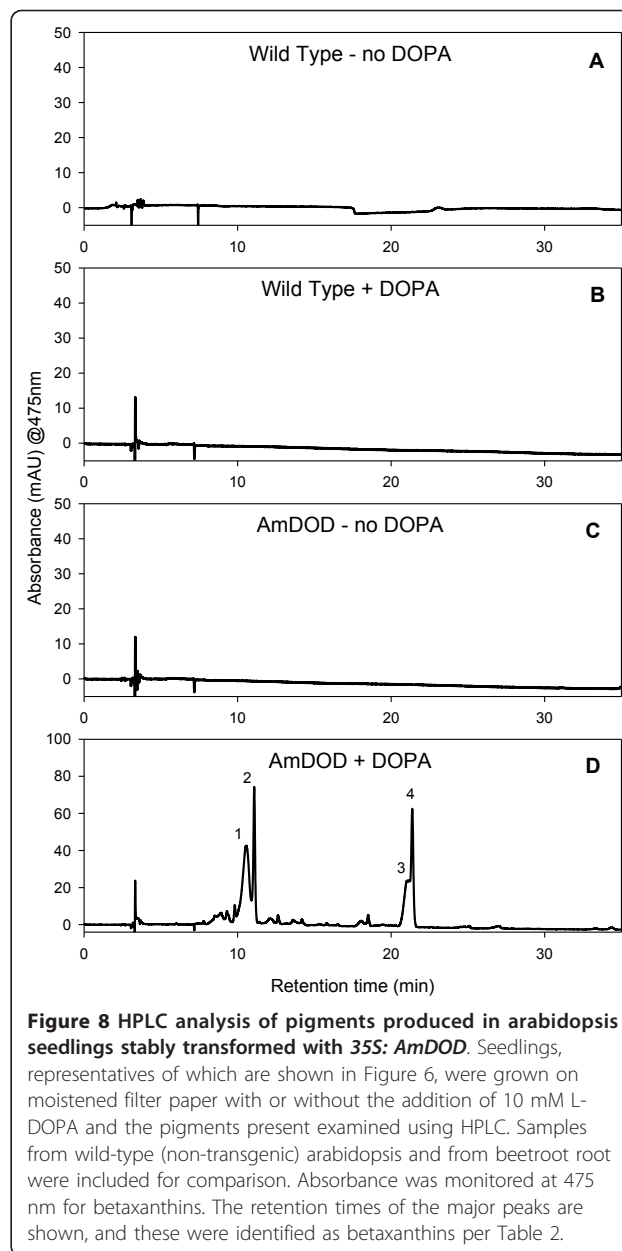
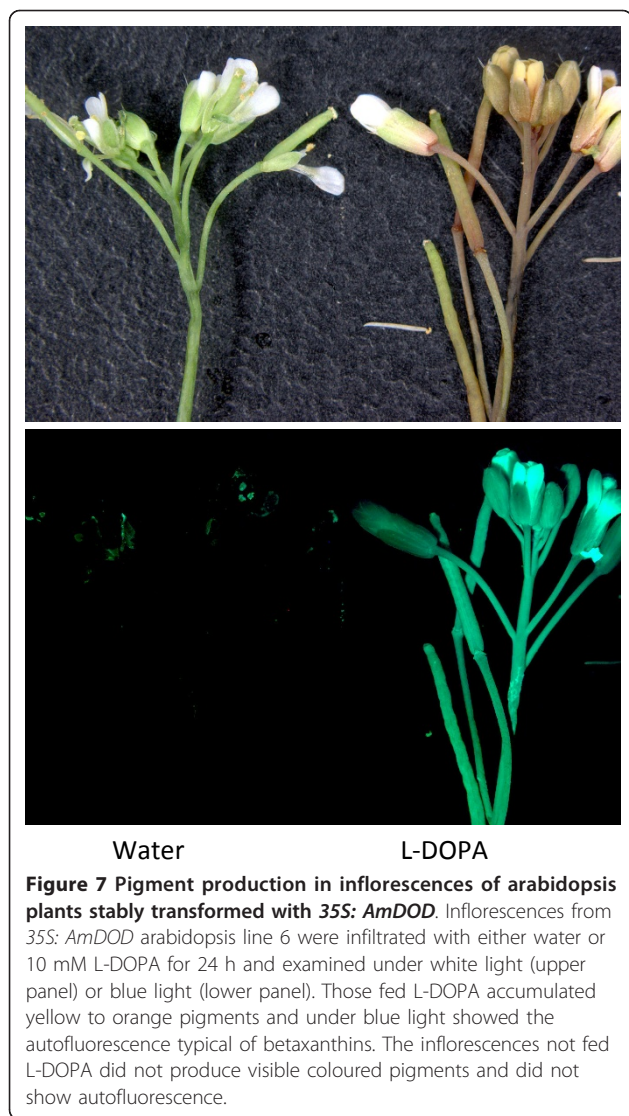
The introduction of a single enzyme (DOD) and feeding of that enzyme's substrate (L-DOPA) were





sufficient to induce both betaxanthin and betacyanin production. Although many steps in betalain production are suggested to be spontaneous, it is somewhat surprising that betacyanin production occurred. It indicates the background presence of an enzyme able to convert L-DOPA to *cyclo*-DOPA, or dopaxanthin to betacyanin/betanidin, and *O*-glycosyltransferases with activity against betanidin. Thus, it is likely that

introduction of just two enzymes, DOD and the (currently uncharacterised) enzyme for conversion of tyrosine to L-DOPA, should be sufficient to confer betaxanthin and betacyanin production to anthocyanin-producing species. The requirement for few novel biosynthetic steps may have assisted in the initial evolution of this pathway in the Caryophyllales. A relatively simple mechanism for betalain biosynthesis



**Table 2** Retention times and spectral maxima of the major peaks detected by HPLC using samples from 35S: AmDOD plants fed 10 mM L-DOPA

Peak	Betalain <sup>a</sup>	Retention Time (min)	$\lambda_{\max}$ (nm)
1	Vulgaxanthin I <sup>b</sup>	10.4	268, 468
2	Unknown betaxanthin	11.6	262, 470
3	Unknown betaxanthin	20.4	264, 472
4	Unknown betaxanthin	21.7	262, 468

<sup>a</sup>Spectral data for all four peaks was generally consistent with data reported previously for betaxanthins, but no specific betaxanthin assignments were made.

<sup>b</sup>Peak one has a retention time and spectrum consistent with that of Vulgaxanthin I, as reported for extracts from beetroot [14] and as compared against a beetroot extract run in the same experimental set.

would also support the multiple origins of the pathway in the Caryophyllales and in some fungi [7].

Given the extensive knowledge available on anthocyanin production and function in Arabidopsis, the stably transformed 35S: AmDOD Arabidopsis plants should provide excellent material to study, for the first time, the physiological effects of having both betalains and anthocyanins in the same plant tissues. The large collection of mutant lines in Arabidopsis should also allow aspects of betalain biosynthesis, such as vacuolar transport, to be examined.

## Methods

### Plant and cell culture material

*Antirrhinum majus* plants were grown under standard glasshouse conditions in Palmerston North, New Zealand. The glasshouse was heated at 15°C and vented at

25°C, without supplementary lighting. Two antirrhinum lines were used. Transformation with 35S: *PgDOD* used line JI19, which produces aurones and flavones but not anthocyanins in the petals, as it is lacking in flavanone 3-hydroxylase activity (homozygous *incolorataII*). 35S: *AmDOD* transformation used either JI19 or *rosea<sup>dorsea</sup>*, which carries a mutation in the R2R3MYB gene *RoseaI* and lacks anthocyanin production in the adaxial epidermis of the petals [27]. *Arabidopsis thaliana* transformation used the Colombia ecotype. Potato cell cultures were obtained by placing 2 cm<sup>2</sup> pieces of potato callus in 50 mL of modified liquid MS media [28] per cotton-plugged 250 mL flask. These cultures were incubated at room temperature (23-27°C) with shaking on an orbital shaker at 100 rpm in the dark. Subculturing was carried out every two weeks with 3 mL of the cell culture used to inoculate a fresh 50 mL of liquid media.

#### PCR cloning of *P. Grandiflora* DOD cDNA and vector construction

A cDNA for the ORF of *DOD* was RT-PCR amplified from mRNA prepared from *P. grandiflora* betalain pigmented petals using primers designed to the published sequence [11]. The forward primer was 5'-AGTCA-GAATCCATGGGTGTTGGGAAGGAA-3', with the first ATG matching the initiation ATG for *DOD*, and the reverse primer was 5'-AGTCATCTAGAATCA-TATGGAAGTGAAGT-3', which incorporated an *XbaI* site. Standard PCR conditions were used with Taq Polymerase (New England Biolabs, Massachusetts, USA) and cycling parameters of 94°C for 4 min, then 30 cycles of 94°C for 30 s, 60°C for 30 s and 72°C for 1 min, with a final extension phase of 72°C for 7 min. The products were cloned into pGEM-T-Easy (Promega, Wisconsin, USA) and confirmed as *PgDOD* by DNA sequencing. The cDNA was then excised as an *EcoRI/XbaI* fragment and ligated into *EcoRI/XbaI* digested *pART7* [29] to from the vector pPN314. The 35S: *AmDOD* construct for particle bombardment, containing the *A. muscaria* 4,5-DOPA dioxygenase cDNA driven by the CaMV35S promoter, was *pNcoDod* [17] (courtesy of Dr. Willibald Schliemann, Leibniz-Institute of Plant Biochemistry, Germany). The binary vector *pPN166* for transformation into *Arabidopsis* was constructed by taking the CaMV35S-cDNA region from *pNcoDod* as a *PvuII* fragment and cloning it into the *NotI* site (after flushing by end-filling) in the binary vector *pMLBART* (a gift from Dr Bart Janssen, Plant & Food Research). The 35S: *GFP* construct was pPN93. Vectors were verified by restriction fragment analysis and/or DNA sequencing.

#### Biolistic transformation

Antirrhinum particle bombardment experiments were performed as described in Shang et al. [30], with the

following variations; the pressure setting was 300 or 400 kPa, the shooting distance 11-12 cm, and petals were bombarded twice. The final DNA concentration for *DOD* constructs was 1 or 2 µg DNA per mg of 1.0 µm gold particles. Controls included gold particles alone (no DNA) and 35S: *GFP* (added at 0.4 µg DNA per mg of 1.0 µm gold particles). Prior to bombardment the petals were surface sterilised by immersion for 15 min in 10% (v/v) bleach containing a few drops of Tween-20, followed by three rinses in sterile water. The adaxial surface of the dorsal petals was bombarded. After bombardment, the plant materials were then cultured on 1/2 MS medium under 20 - 50 µmol m<sup>-2</sup> s<sup>-1</sup> light from Osram 36 W grolux fluorescent tubes (16 h photoperiod) at 25°C. At least two flowers were used for each construct per experiment, and each experiment was repeated at least twice.

Potato cell suspension cultures for particle bombardment-mediated transformation were prepared by filtering 3 mL of culture onto sterile filter paper and subculturing them on a solid media in tubs for 48 h prior to transformation. The biolistic parameters were the same as those used for the antirrhinum petals with exception that they were only bombarded once. A sterilised metal grid was placed over the cells, on top of the culture tub, to prevent displacement of the cells from the helium in-flow.

#### *Arabidopsis* transformation

The floral spray method developed by Clough and Bent [31] was used for the transformation of *Arabidopsis*. Seeds were harvested from the *Agrobacterium*-inoculated plants and transgenics selected by spraying germinating seedlings with glufosinate herbicide (Basta, Bayer Crop Sciences). Positive transformants were grown through to production of T2 seeds following self-pollination.

#### L-DOPA feeding

Infiltration of antirrhinum petals with L-DOPA was carried out 24 h after biolistic transformation. The petals were placed in 10 mM L-DOPA solution and a brief vacuum (30-60 s) applied, until the solution boiled vigorously and the petals became translucent. Following infiltration excess solution was blotted off and the petals incubated on 1/2 MS medium under the same conditions as post-bombardment. Control petals were handled in the same manner but with sterile water substituted for L-DOPA. Petals were observed for betalain production after a further 24 h. Transformed potato cell cultures were fed with 10 mM L-DOPA solution by dispensing 1 mL of the solution on to the filter disks supporting the cells. The L-DOPA solution was applied to half of the samples immediately after transformation.

Germinated arabidopsis seedlings were fed with 10 mM L-DOPA by transfer of the filter paper containing the seedlings on to a plate containing L-DOPA solution. Seedlings were observed for betalain pigment production after a further 12 h. For feeding of inflorescences, six inflorescences were collected from 35S: *AmDOD* line 6 and cut to 1 cm long. Three inflorescences were immersed in 10 mM L-DOPA solution and the other three immersed in water, and both sets were left for 2 min. The inflorescences were then placed into 1.5 ml Eppendorf tubes with either 0.5 ml of 10 mM L-DOPA solution or water, and the tubes left open on the bench for 24 h.

### PCR analysis

RT-PCR analysis for *DOD* transgene expression in 35S: *AmDOD* arabidopsis plants used total RNA extracted from leaf tissue following the RNeasy protocol of the Qiagen RNeasy mini kit. Five rosette leaves were sampled from each of six individual T2 lines, as well as a non-transgenic wild type line. Following DNase I treatment 500 ng of RNA from each sample was used to generate cDNA using the Roche Transcriptor First Strand cDNA Synthesis Kit. PCR used Taq polymerase (Roche, New Zealand) and the following primers: DODF1 5'-CATACTACCATGTCCACCAAG-3', DODF2 5'-AGCACTGCTTCTATATCGTC-3', Act2S 5'-TCC CTCAGCACATTCCAGCAGAT-3', Act2AS 5'-AACGATT CCTGGACCTGCCTCATC-3'. The Actin primers correspond to the arabidopsis *Actin2* gene (AT3G18780). The thermocycling conditions were 94°C for 2 min and 25 cycles of 94°C for 20 s, 55°C for 30 s and 72°C for 30 s. The PCR products were separated on a 1% (w/v) TBE agarose gel containing ethidium bromide and visualised using UV-illumination. PCR products were also cloned and sequenced to confirm that the target PCR product was being amplified.

### HPLC analysis

For arabidopsis analysis whole seedlings were extracted. For antirrhinum analysis, to ensure that similar petal regions were being compared, the ridge region of the biolistically transformed petals was excised away from the remainder of the petals for chemical analysis. The ridge is a distinct raised area that divides the lobes and throat of the dorsal petals. Ridge tissue from between three and six petals was pooled to give total sample fresh weights of 60 to 300 mg. Absorbance at 470 nm and 538 nm was used for detection of betaxanthins or betacyanins, respectively. Beetroot (20 mg freeze dried sample of red root) was used as a standard source of betalains, and strong peaks with the expected retention times and spectra data were observed.

Each sample was extracted three times in 1 ml of 80% (v/v) methanol containing 50 mM sodium ascorbate, as described in Schliemann *et al.* [14], with one overnight extraction at 4°C. The samples were centrifuged for 4 min at 10,000 rpm, the supernatant removed and the pellet re-extracted in the next 1 ml of 80% methanol with ascorbate. The supernatants once removed, were combined to give the crude extract. The extract was dried in vacuo on a Savant SC210 Speedvac to near dryness, then freeze dried overnight to complete dryness. Extracts were resuspended in MilliQ water and made up to a final volume of 500 µl. The extracts were syringe filtered through a 0.45 µm nylon filter as per Svenson *et al.* [26] and the pigments analysed by high performance liquid chromatography (HPLC). The analysis of the antirrhinum samples used a Dionex 3000 Ultimate solvent delivery system with a Phenomenex Luna (5 µm, 150 × 4.6 mm) RP-18 endcapped column (column temperature 30°C) and a Dionex 3000 Diode Array Detector (DAD). Elution (1 ml min<sup>-1</sup>) was performed using a solvent system comprising solvent A [1.0% formic acid in water] and solvent B [80% acetonitrile in water] and a linear gradient starting with 100% A, decreasing to 80% A at 62 mins, and then a linear gradient to 100% B at 67 mins, remaining at 100% B for a further 3 min, then returning to initial conditions. Betaxanthins were detected at 470 nm and betacyanins at 538 nm [25]. The analysis of the arabidopsis samples used the solvent system of Schliemann *et al.* [14]. It was conducted on a Hewlett Packard HP 1100 with two Merck Chromolith analytical columns and a C-18 guard column.

### Additional material

**Additional file 1: PCR analysis for *DOD* transgene expression in 35S: *AmDOD* arabidopsis plants.** Total RNA was extracted from six lines of 35S: *AmDOD* arabidopsis, as well as a non-transgenic wild type line, and analysed for *DOD* transcript levels using RT-PCR. PCR primers for an endogenous actin gene were used as a positive control for RNA/cDNA integrity. PCR products were separated on a 1% (w/v) agarose gel containing ethidium bromide and visualised using UV-illumination. (PPT 356 kb).

### Acknowledgements

We thank Ian King and Julie Ryan for care of plants, Steve Arathoon and John Harris for technical assistance, Willibald Schliemann for the *A. muscaria* 4,5-DOPA dioxygenase cDNA vector, Andrew Gleave for *pART7*, Bart Janssen for *pMLBART*, Simon Coupe for *pPN93*, and the New Zealand Foundation for Research, Science, and Technology contract C02X0805 for supporting KES, SCD and KMD. NNH thanks The Todd Foundation, The Freemasons, NZ Federation of Graduate Women and the J. Skipworth Scholarship for their financial support. KEC thanks Victoria University for her PhD scholarship grant.

### Author details

<sup>1</sup>New Zealand Institute for Plant & Food Research Limited, Private Bag 11-600, Palmerston North, New Zealand. <sup>2</sup>School of Biological Sciences,

University of Canterbury, Private Bag 4-800, Christchurch, New Zealand.  
<sup>3</sup>Victoria University of Wellington, PO Box 600, Wellington 6140, New Zealand.  
<sup>4</sup>Commonwealth Scientific and Industrial Research Organization, Ecosystem Sciences, Urrbrea, South Australia 5064, Australia.

#### Authors' contributions

NNH conducted the AmdOD biolistic experiments in antirrhinum, produced and contributed to the analysis of the arabidopsis plants, and contributed to writing of the manuscript; JJ made pPN314 and conducted the biolistic experiments in potato; KMD conducted the PgDOD biolistic experiments in antirrhinum and wrote the main manuscript draft; DHL conducted the HPLC analysis of biolistically transformed material and contributed to the manuscript draft; PEJ contributed to supervision of JJ and NNH and project design; SCD assisted with cell culture experiments and supervision of JJ; KEC conducted PCR analysis and inflorescence feeding for the arabidopsis plants; KSG contributed to supervision of KEC. KES conceived and coordinated the study, supervised NNH and JJ, and contributed to analysis of the results and writing of the manuscript. All authors read and approved the final manuscript.

Received: 5 December 2011 Accepted: 12 March 2012

Published: 12 March 2012

#### References

1. Grotewold E: **The genetics and biochemistry of floral pigments.** *Ann Rev Plant Biol* 2006, **57**:761-780.
2. Tanaka Y, Sasaki N, Ohmiya A: **Biosynthesis of plant pigments: anthocyanins, betalains and carotenoids.** *Plant J* 2008, **54**:733-749.
3. Gould KS, Lister C: **Flavonoid functions in plants.** In *Flavonoids: Chemistry, Biochemistry and Applications*. Edited by: Andersen ØM, Markham KR. CRC Press, Boca Raton; 2006:397-441.
4. Davies KM: **An introduction to plant pigments in biology and commerce.** In *Plant Pigments and their Manipulation*. Edited by: Davies KM. Blackwell Publishing, Oxford; 2004:1-22.
5. Strack D, Vogt T, Schliemann W: **Recent advances in betalain research.** *Phytochemistry* 2003, **62**:247-269.
6. Zryd J-P, Christinet L: **Betalains.** In *Plant Pigments and their Manipulation*. Edited by: Davies KM. Oxford: Blackwell Publishing; 2004:185-213.
7. Brockington SF, Walker RH, Glover BJ, Soltis PS, Soltis DE: **Complex pigment evolution in the Caryophyllales.** *New Phytol* 2011, **190**:854-864.
8. Mabry T: **The betacyanins, a new class of red violet pigments, and their phylogenetic significance.** New York: Roland Press; 1964.
9. Gándia-Herrero F, García-Carmona F, Escribano J: **Fluorescent pigments: new perspectives in betalain research and applications.** *Food Res Intl* 2005, **38**:879-884.
10. Gándia-Herrero F, Jiménez-Atiénzar M, Cabanes J, Escribano J, García-Carmona F: **Fluorescence detection of tyrosinase activity on dopamine-betaxanthin purified from *Portulaca oleracea* (Common Purslane) flowers.** *J Agric Food Chem* 2009, **57**:2523-2528.
11. Christinet L, Burdet F, Zaiko M, Hinz U, Zryd JP: **Characterization and functional identification of a novel plant 4,5-extradiol dioxygenase involved in betalain pigment biosynthesis in *Portulaca grandiflora*.** *Plant Physiol* 2004, **134**:265-274.
12. Gándia-Herrero F, Escribano J, García-Carmona F: **Betaxanthins as substrates for tyrosinase: An approach to the role of tyrosinase in the biosynthetic pathway of betalains.** *Plant Physiol* 2005, **138**:421-432.
13. Steiner U, Schliemann W, Böhm H, Strack D: **Tyrosinase involved in betalain biosynthesis of higher plants.** *Planta* 1999, **208**:114-124.
14. Schliemann W, Kobayashi N, Strack D: **The decisive step in betaxanthin biosynthesis is a spontaneous reaction.** *Plant Physiol* 1999, **119**:1217-1232.
15. Sasaki N, Adachi T, Koda T, Ozeki Y: **Detection of UDP-glucose cyclo-DOPA 5-O-glucosyltransferase activity in four o'clocks (*Mirabilis jalapa* L.).** *FEBS Lett* 2004, **568**:159-162.
16. Sasaki N, Wada K, Koda T, Kasahara K, Adachi T: **Isolation and characterization of cDNAs encoding an enzyme with glucosyltransferase activity for cyclo-DOPA from Four O'clocks and Feather Cockscombs.** *Plant Cell Physiol* 2005, **46**:666-670.
17. Mueller LA, Hinz U, Uze M, Sautter C, Zryd JP: **Biochemical complementation of the betalain biosynthetic pathway in *Portulaca grandiflora* by a fungal 3,4-dihydroxyphenylalanine dioxygenase.** *Planta* 1997, **203**:260-263.
18. Mueller LA, Hinz U, Zryd JP: **The formation of betalamic acid and muscaflavin by recombinant DOPA-dioxygenase from *Amanita*.** *Phytochemistry* 1997, **44**:567-569.
19. Vogt T, Grimm R, Strack D: **Cloning and expression of a cDNA encoding betanidin 5-O-glucosyltransferase, a betanidin- and flavonoid-specific enzyme with high homology to inducible glucosyltransferases from the Solanaceae.** *Plant J* 1999, **19**:509-519.
20. Vogt T, Zimmermann E, Grimm R, Meyer M, Strack D: **Are the characteristics of betanidin glucosyltransferases from cell-suspension cultures of *Dorotheanthus bellidiformis* indicative of their phylogenetic relationship with flavonoid glucosyltransferases?** *Planta* 1997, **203**:349-361.
21. Shimada S, Inoue YT, Sakuta M: **Anthocyanidin synthase in non-anthocyanin-producing Caryophyllales species.** *Plant J* 2005, **58**:950-959.
22. Shimada S, Otsuki H, Sakuta M: **Transcriptional control of anthocyanin biosynthetic genes in the Caryophyllales.** *J Exp Bot* 2007, **58**:957-967.
23. Shimada S, Takahashi K, Sato Y, Sakuta M: **Dihydroflavonol 4-reductase cDNA from non-anthocyanin producing species in the Caryophyllales.** *Plant Cell Physiol* 2004, **45**:1290-1298.
24. Stafford HA: **Anthocyanins and betalains: evolution of the mutually exclusive pathways.** *Plant Sci* 1994, **101**:91-98.
25. Kugler F, Stintzing FC, Carle R: **Identification of betalains from petioles of differently colored Swiss Chard (*Beta vulgaris* L. ssp. cicla [L.] Alef. Cv. Bright Lights) by High-Performance Liquid Chromatography-Electrospray Ionization Mass Spectrometry.** *J Agr Food Chem* 2004, **52**:2975-2981.
26. Svenson J, Smallfield BM, Joyce NI, Sansom CE, Perry NB: **Betalains in red and yellow varieties of the andean tuber crop ulluco (*Ullucus tuberosus*).** *J Agr Food Chem* 2008, **56**:7730-7737.
27. Schwinn K, Venail J, Shang Y, Mackay S, Alm V, Butelli E, Oyama R, Bailey P, Davies K, Martin C: **A small family of MYB-regulatory genes controls floral pigmentation intensity and patterning in the genus *Antirrhinum*.** *Plant Cell* 2006, **18**:831-851.
28. Murashige T, Skoog F: **A revised medium for rapid growth and bioassays with tobacco tissue cultures.** *Physiol Plantarum* 1962, **15**:743-747.
29. Gleave AP: **A versatile binary vector system with a T-DNA organizational-structure conducive to efficient integration of cloned DNA into the plant genome.** *Plant Mol Biol* 1992, **20**:1203-1207.
30. Shang Y, Schwinn KE, Hunter DA, Waugh TL, Bennett MJ, Pathirana NN, Brummell DA, Jameson PE, Davies KM: **Methods for transient assay of gene function in floral tissues.** *Plant Methods* 2007, **3**:1.
31. Clough SJ, Bent AF: **Floral dip: a simplified method for *Agrobacterium*-mediated transformation of *Arabidopsis thaliana*.** *Plant J* 1998, **16**:735-743.

doi:10.1186/1471-2229-12-34

Cite this article as: Harris et al.: Betalain production is possible in anthocyanin-producing plant species given the presence of DOPA-dioxygenase and L-DOPA. *BMC Plant Biology* 2012 **12**:34.

Submit your next manuscript to BioMed Central and take full advantage of:

- Convenient online submission
- Thorough peer review
- No space constraints or color figure charges
- Immediate publication on acceptance
- Inclusion in PubMed, CAS, Scopus and Google Scholar
- Research which is freely available for redistribution

Submit your manuscript at  
www.biomedcentral.com/submit

