

RESEARCH ARTICLE

Open Access



# Character changes and Transcriptomic analysis of a cassava sexual Tetraploid

Xia Chen<sup>1†</sup>, Hanguai Lai<sup>1†</sup>, Ruimei Li<sup>2†</sup>, Yuan Yao<sup>2</sup>, Jiao Liu<sup>2</sup>, Shuai Yuan<sup>1</sup>, Shaoping Fu<sup>2</sup>, Xinwen Hu<sup>1\*</sup> and Jianchun Guo<sup>2\*</sup>

## Abstract

**Background:** Cassava (*Manihot esculenta* Crantz) is an important food crop known for its high starch content. Polyploid breeding is effective in its genetic improvement, and use of  $2n$  gametes in sexual polyploid breeding is one of the potential methods for cassava breeding and improvement. In our study, the cassava sexual tetraploid (ST), which carries numerous valuable traits, was successfully generated by hybridizing  $2n$  female gametes SC5 (♀) and  $2n$  male gametes SC10 (♂). However, the molecular mechanisms remain unclear. To understand these underlying molecular mechanisms behind the phenotypic alterations and heterosis in ST plants, we investigated the differences in gene expression between polyploids and diploids by determining the transcriptomes of the ST plant and its parents during the tuber root enlargement period. We also compared the characters and transcriptomes of the ST plant with its parents.

**Results:** The ST plant was superior in plant height, stem diameter, leaf area, petiole length, plant weight, and root weight than the parent plants, except the leaf number, which was lower. The number of starch granules was higher in the roots of ST plants than those in the parent plants after five months (tuber root enlargement period), which could be due to a higher leaf net photosynthetic rate leading to early filling of starch granules. Based on transcriptome analysis, we identified 2934 and 3171 differentially expressed genes (DEGs) in the ST plant as compared to its female and male parents, respectively. Pathway enrichment analyses revealed that flavonoid biosynthesis and glycolysis/gluconeogenesis were significantly enriched in the ST plants, which might contribute to the colors of petiole (purple-red), root epidermis (dark brown), and tuber starch accumulation, respectively.

**Conclusions:** After sexual polyploidization, the phenotype of ST has changed significantly in comparison to their diploid parents, mainly manifest as enlarged biomass, yield, early starch filling, deep colored petiole and root epidermis. The tetraploid plants were also mature early due to early starch grain filling. Owing to enriched flavonoid biosynthesis and glycolysis/gluconeogenesis, they are possibly resistant to adversity stresses and provide better yield, respectively.

**Keywords:** *Manihot esculenta* Crantz, Sexual tetraploids, Characters, Transcriptome, Differentially expressed genes

\* Correspondence: [huxinwen@hainu.edu.cn](mailto:huxinwen@hainu.edu.cn); [jjanchunguoh@163.com](mailto:jjanchunguoh@163.com)

<sup>†</sup>Xia Chen, Hanguai Lai and Ruimei Li contributed equally to this work.

<sup>1</sup>Agricultural College of Hainan University, Haikou 571104, China

<sup>2</sup>Key Laboratory of Biology and Genetic Resources of Tropical Crops, Ministry of Agriculture, Institute of Tropical Bioscience and Biotechnology, Chinese Academy of Tropical Agricultural Sciences, Haikou 571101, China



© The Author(s). 2021 **Open Access** This article is licensed under a Creative Commons Attribution 4.0 International License, which permits use, sharing, adaptation, distribution and reproduction in any medium or format, as long as you give appropriate credit to the original author(s) and the source, provide a link to the Creative Commons licence, and indicate if changes were made. The images or other third party material in this article are included in the article's Creative Commons licence, unless indicated otherwise in a credit line to the material. If material is not included in the article's Creative Commons licence and your intended use is not permitted by statutory regulation or exceeds the permitted use, you will need to obtain permission directly from the copyright holder. To view a copy of this licence, visit <http://creativecommons.org/licenses/by/4.0/>. The Creative Commons Public Domain Dedication waiver (<http://creativecommons.org/publicdomain/zero/1.0/>) applies to the data made available in this article, unless otherwise stated in a credit line to the data.

## Background

Cassava (*Manihot esculenta* Crantz) is the fourth most widely grown crop in the tropics, one of three major starch crops in the world, and the main food crop in tropical Africa [1]. Its tuberous roots are rich in starch—20–40% of fresh weight and 80% of dry weight, — giving it the highest rank among the known starch crops, and hence cassava is often known as “underground food”, “king of starch”, “special crop” and “energy crop” [2–4]. The breeding studies on this important economic and energy crop are very important and were widely reported. The conventional breeding methods by producing sexual hybrids and selecting natural variation are the common breeding methods used to produce cassava varieties [5]. An excellent cassava variety among the TMS91934 and TMS89/00037–17 cassava clones was identified by observing the leaf morphology [6]. Other breeders have also obtained fine varieties through the intraspecific hybridization of excellent cassava germplasm, such as KU50 and the Rayong series [7]. Although the traditional improvement approach has helped cassava breeding process, it is still far from enough to meet the demand for cassava root yield, starch content, and resistance to abiotic and biotic stresses.

Polyploid breeding has been reported as an effective way in the genetic improvement of crops [8]. The yield of tetraploid *Brassica rapa* ssp. (*Chinese cabbage*) is 20–30% higher than that of diploid with enhanced resistance to abiotic and biotic stresses [9]. The tetraploid of Hongyang kiwifruit has significantly enhanced disease-resistance to ulcer in vitro than the diploid [10]. In polyploid breeding of cassava, most varieties were autotetraploids that were produced by doubling the number of somatic cell chromosomes by using colchicine to treat axillary buds or stem buds, such as the SC8 and SC124 autotetraploids [11–13]. Another method of colchicine soaking and mixed culture to treat budded stem segments, cotyledon segments, and cluster buds of cassava to obtain SC8 and ARG7 autopolyploids was also used [14].

Breeders now use sexual multiplication mediated by  $2n$  gametes to form chromosome recombination [15, 16]. The polyploid offsprings were formed by  $2n$  gamete meiosis polyploidization ( $2n$  gametes were produced by a microspore or megaspore mother cell without meiosis), and the homologous chromosomes of the parents were recombined at a high frequency; thus, the parent alleles can segregate each other into forming offsprings [17–19]. Recombining genes through somatic chromosome-doubling-mitosis polyploidization (somatic cells undergo chromosome doubling during mitosis) is not possible, due to the lack of meiotic recombination. Breeding scientists have successfully developed several excellent varieties of crops through  $2n$  gamete

polyploidization [15], such as *Primula denticulata* (primrose) [20], *Vaccinium* section *Cyanococcus* (blueberry) [21], *Populus tomentosa* Carr. (poplar) [22], and *Hevea brasiliensis* (rubber) [23]. In *Solanum tuberosum* (potato) crop, polyploid breeding by  $2n$  gametes has helped develop elite varieties (from haploid to hexaploid), which have high protein content [24–26]. Sexual polyploids show desired phenotypic and physiological growth changes in comparison to their diploid parents: the sexual triploid *Tulipa gesneriana* L. (tulip) is commercially important because of its large flowers and bright colors [27], and the sexual tetraploid *B. rapa* ssp. *pekinensis* has high biomass and an increased yield [28]. Sexual polyploids are also more stable than asexual polyploids, because they develop from zygotes so there is no chimera phenomenon [29]. Thus, sexual polyploidization breeding is more valuable in introducing new variation and developing new combinations of alleles in the offsprings.

Despite several reports on sexual polyploidization in other plants, study on  $2n$  gamete polyploidization in cassava has rarely been reported. Our research group has successfully obtained sexual tetraploid (ST) plants of cassava by hybridizing  $2n$  female and male gametes obtained by treating the cassava megaspore and microspore inflorescence by colchicine and dimethyl sulfoxide (DMSO) to form  $2n$  gametes at sexual stage [30, 31]. Reports show that phenotypic alterations in polyploids could be related to changes in the expression of particular groups of genes after chromosome doubling [32–34]. These gene expression changes have been found in many natural and synthesized polyploid plants [35], such as, a changed expression of both new genes and gene groups in allopolyploid/–autotetraploids *Arabidopsis* [33]. The importance of RNA-mediated gene regulation in polyploidization of *Brassica napus* [36, 37], significant changes in the genes related to flavonoid biosynthesis and lipid in seed development after polyploidization in *Gossypium* [38, 39], and the haphazard loss and silencing of genes after polyploid formation in natural or synthetic allotetraploids of *Tragopogon miscellus* [40] are some examples of changed gene expression. But the changes in gene expression and regulation networks in cassava polyploids need further study.

Development of the next generation high-throughput sequencing technology is a revolutionary breakthrough in genomics and transcriptional detection. By measuring transcriptome-wide gene expression, we can analyze the differences in gene expression between polyploids and diploids, which can help understand the mechanism behind polyploid phenotypic variation. Transcriptome sequencing techniques have been used in many artificial and naturally occurring polyploid plants, and it has been demonstrated that there is a significant difference in

gene expression between polyploids and diploids [35, 41–43]. These DEGs were usually associated with plant hormone synthesis, signal transduction, transcription factors, and glucose metabolism, etc., which were associated with phenotypic differences in growth and reproduction between tetraploids and diploids [34, 44, 45]. The underlying molecular mechanisms of the phenotypic alterations and heterosis in ST plants of cassava are still unknown and need further study. To address this concern, we investigated the differences in gene expression between polyploids and diploids by determining the transcriptomes of the ST plant and its parents during the period of enlargement of tuberous roots. We also compared the characters and transcriptomes of the ST plant with its parents. Our study will help reveal the underlying molecular mechanisms of phenotypic variations in ST plants at the functional genome level. It will also pave the way for further research on the structure and function of key controlling genes that are related to important agronomic traits, such as root formation, root yield, and adversity stresses in the sexual polyploids of cassava.

## Results

### Polyploidy identification of the hybrid cassava variety

The hybrid cassava seedlings were derived from the sexual cross of the parents SC5(♀) × SC10(♂). The ploidy of the hybrid cassava seedlings (F1) was confirmed by flow cytometry and leaf cell chromosome counts. The DNA content of the diploid parent shows a main peak at channel 200 (Fig. 1a), and the hybrid cassava plants show twice the DNA content of the control diploids, with the main peak at channel 400 (Fig. 1b). Their chromosome number is twice that of the diploid parent (Figs. 1c and d). We did not find chimeric diploid cells, which confirmed that the hybrid cassava variety is a uniform tetraploid (Fig. 1). The ploidy stability of the clone lines (F2/F3) was confirmed by counting the leaf cell chromosomes. The results show that the ploidy of cassava sexual tetraploids (ST) is uniform and stable (Fig. 1e, f).

### Characters of the cassava ST plants in the field

The results showed that the ST plants had large leaves with a rounder leaf shape, thicker veins, and a longer and purple-red petiole as compared to the parent plants (Fig. 2b). The root epidermis of the ST plant was darker (Fig. 2c) and its phloem was thicker than that of its parent plants (Fig. 2c). The average values of the above ground parts of the ST plants including plant height, stem diameter, leaf area, petiole length, and plant weight were higher than those of the parent plants, except the leaf numbers, which were lower (Table 1). For the underground parts, the root weight of ST plants was higher than that of the parent plants, but there was no

significant difference in the length or diameter of the roots (Table 1). The leaf net photosynthetic rate was higher in the ST plant as compared to its parent plants, while root dry matter rate does not show any significant difference (Table 1).

The starch granules in the tuber roots of the ST, SC5 and SC10 were investigated five months after planting by transmission electron microscopy of their cross-sections. The number of starch granules was higher in the roots of ST plants than that in the parent plants after five months (tuber root enlargement period) (Fig. 3), but there was no difference after ten months (tuber root maturity period). Additional file (Fig. S1) shows details of this observation. Our results indicate that the starch grains in ST plants filled in earlier than in the parents. We did not observe any significant difference in cell size between ST plants and parent plants in these two periods (Figs. 3 and S1). In the ST plant, two or three starch grains stuck together to form irregularly shaped amyloplasts, while in its parents, most of the amyloplasts had one starch granule, while few of them had two or three starch granules (the red arrow in Fig. 3). The density of the “zebra stripes” was also different in the starch granules of ST plants as compared to that in parent plants. Our findings indicate changes in the internal structure of the starch granules in ST plants.

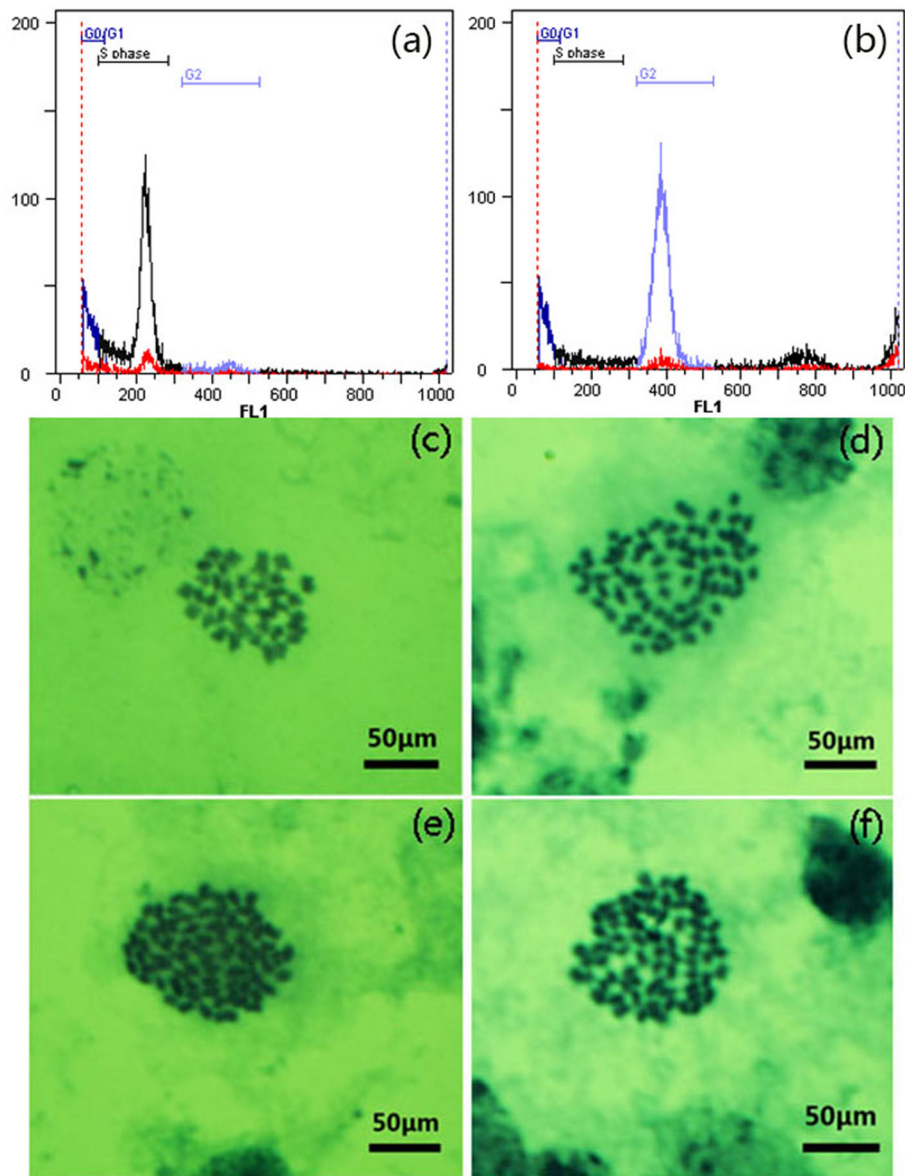
### Transcriptome data acquisition

In total reads, the proportion of unmapped reads was approximately 20%, the proportion of unique mapped reads was approximately 79.5%, and the proportion of multiple mapped reads was approximately 0.5% (Table 2). The correlation coefficient heatmap analysis and reproducibility assay showed that the three replicates of each variety were highly correlated (Pearson correlation > 0.95) and repeatable (Fig. 4). An additional movie file (Fig. S2) shows this observation in more detail. The results demonstrate that the duplicate data are valid for gene expression analysis.

In total, of 27,274 known genes that make up 82.54% of the entire reference genome, we detected 611 potential new genes. Most of these genes were expressed in all three plant materials, and some genes were exclusively expressed in specific ones such as SC5 (497), SC10 (418), and ST (559) (Fig. 5a).

### Analysis of differentially expressed genes between the ST plants and its parent plants

We identified 2934 and 3171 DEGs in the ST plant as compared to its female and male parents, respectively (Fig. 5b). Our results show that only a small number of genes were differentially expressed among all the detected genes in ST plants and parent plants, indicating



**Fig. 1** Ploidy determination of the hybrid cassava variety. **a** Diploid cassava variety images captured by flow cytometry; **b** Hybrid cassava variety images captured by flow cytometry; **c** Chromosomes of diploid foliage,  $2n = 2x = 36$ ; **d** Chromosomes of hybrid variety F1 foliage,  $2n = 2x = 72$ ; **e** Chromosomes of clones F2 foliage,  $2n = 2x = 72$ ; **f** Chromosomes of clones F3 foliage,  $2n = 2x = 72$

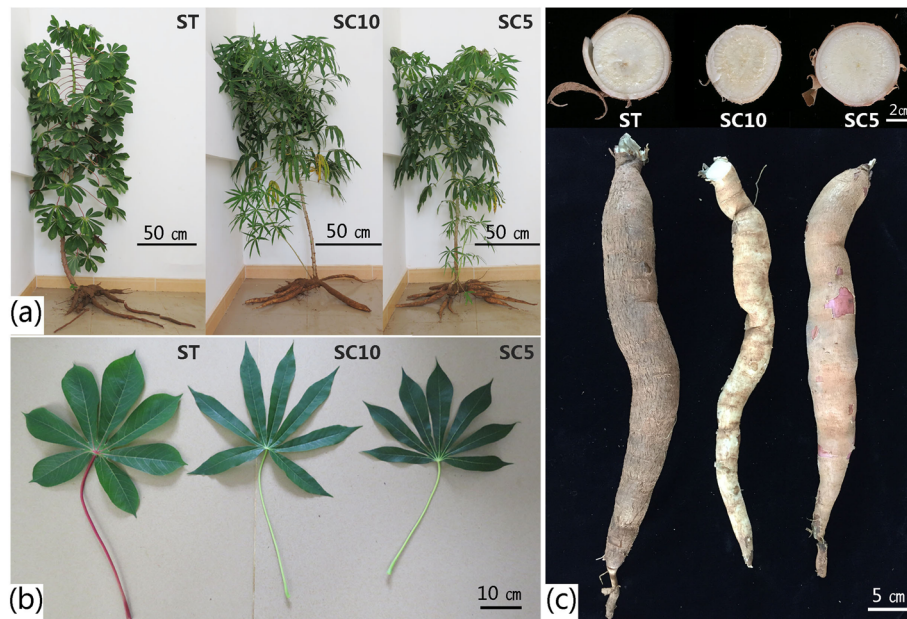
that gene expression had no obvious genome-wide change after polyploidization.

#### Gene ontology functional and KEGG pathway enrichment analyses of DEGs

The GO function enrichment analysis showed that the DEGs between the ST and its parents were grouped into 44/43 GO terms, respectively, which were included in cellular processes, cellular components, and molecular function (Figs. 6a and b). Compared to the female parent, the DEGs were mostly enriched in the biological process of cellular processes, metabolic processes,

single-organism processes, biological regulation, response to stimulus, and localization. The enrichment distribution of ST plants as compared to the male parent was very similar to the female parent, except that no DEGs were enriched in the biological process of supra-molecular fiber. The DEGs were enriched in the process of flavonoid biosynthesis and metabolism as compared to the female parent.

Figures 7a and b show the top 20 enrichment pathways, which are similar to the GO enrichment results. Compared to the female parent SC5, the DEGs were most enriched in flavonoid biosynthesis (Fig. 7a). Many



**Fig. 2** Phenotypic observation of the cassava sexual tetraploids and their diploid parents. **a** Sexual tetraploid and its parent diploid plants five months after planting; **b** Leaves of the cassava sexually tetraploid and its diploid parents; **c** Tuber roots of the cassava sexual tetraploid and its diploid parents (the top of the pictures are the cross-sections of the tuber roots of ST, SC10, and SC5, respectively)

DEGs were secondarily enriched in the process of glycolysis/gluconeogenesis in both female and male parents (Figs. 7a and b). Glycolysis/gluconeogenesis were closely related to starch accumulation in cassava roots (Fig. 8), which reveals that sexual tetraploidy may affect the starch accumulation.

#### Verification of DEGs involved in glycometabolism by quantitative real-time RT-PCR (qRT-PCR)

To verify the accuracy of the RNA-seq sequencing results, 21 DEGs involved in glycolysis/gluconeogenesis were selected for qRT-PCR. Figure 8 illustrates the up-regulated DEGs between the ST and its parent plants in

red boxes and the down-regulated DEGs in green boxes. As in the transcriptome sequencing analysis, the RNAs extracted from tuberous roots of three cassava plant materials during the tuber enlargement period were used for qRT-PCR (which were the same as used in the transcriptome sequencing analysis). The relative expression change trends of qRT-PCR are in accordance with that of RNA-seq (Fig. 9), which demonstrates that the transcriptome comparison data are reliable.

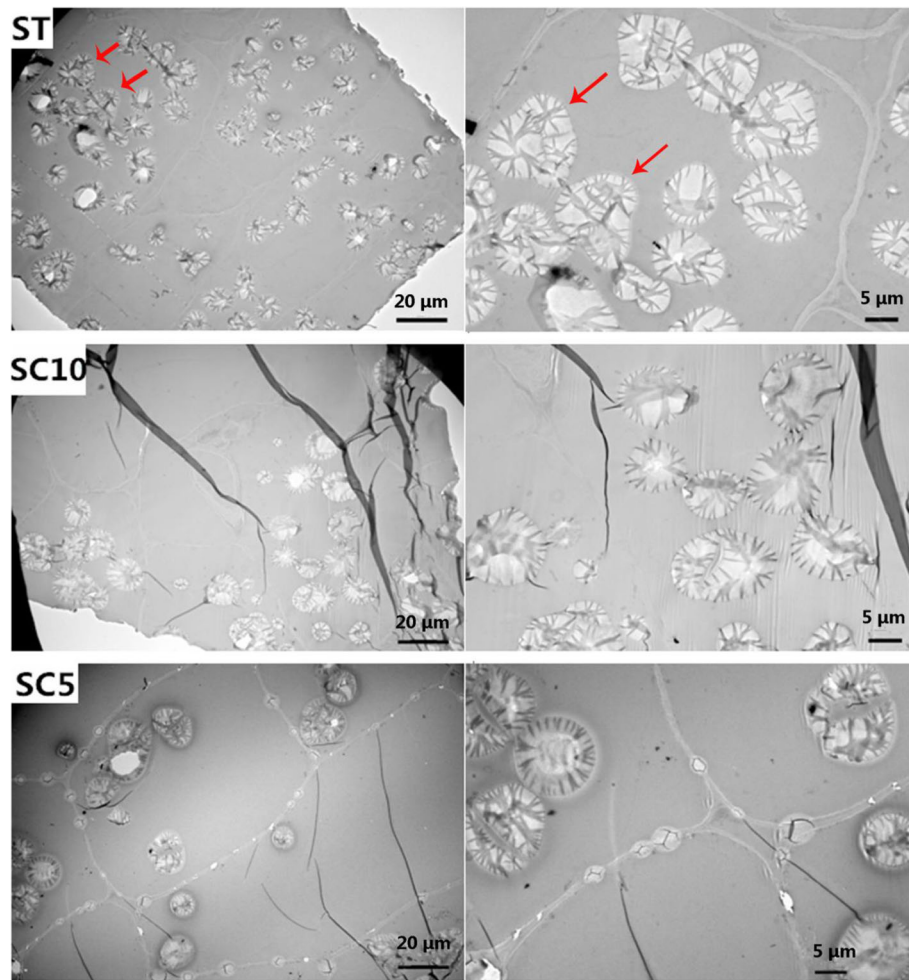
#### Discussion

The sexual polyploid of  $2n$  gametes is the most important polyploidy in plants, as germ cells are more sensitive

**Table 1** Phenotypic characters of the cassava sexual tetraploid (ST) plants and their parent plants in the field

Parameter	Sexual Tetraploid (ST) Plants	SC10(♂) Plants	SC5(♀) Plants
Height (cm)	205.00 ± 9.57A	195.00 ± 8.66A	167.67 ± 16.62B
Stem diameter (cm)	4.51 ± 0.65A	2.65 ± 0.33B	3.13 ± 0.32A
Leaf area (cm <sup>2</sup> )	518.19 ± 23.57A	308.33 ± 35.66B	306.16 ± 59.37B
Leaf number	78.67 ± 10.26A	107.00 ± 25.24AB	129.30 ± 6.11B
Petiole length (cm)	36.33 ± 3.51A	21.83 ± 5.92B	18.50 ± 2.31B
Aboveground part weight (kg)	4.10 ± 1.22A	1.53 ± 0.31B	1.49 ± 0.07B
Underground part weight (kg)	4.08 ± 1.73A	2.33 ± 0.33B	2.69 ± 0.17B
Length of root (cm)	39.55 ± 21.18A	36.70 ± 12.16A	40.26 ± 15.16A
Diameter of root (cm)	3.97 ± 0.80A	3.05 ± 0.81B	3.42 ± 0.98A
Net photosynthetic rate (μmol·m <sup>-2</sup> ·s <sup>-1</sup> )	11.87 ± 1.23A	6.05 ± 1.94B	8.51 ± 1.46B
Root dry matter rate (%)	28.51 ± 0.52A	28.44 ± 0.16A	32.56 ± 1.03A

Note: Different capital letters represent significant difference at 0.05 level (Duncan,  $P = 0.05$ )

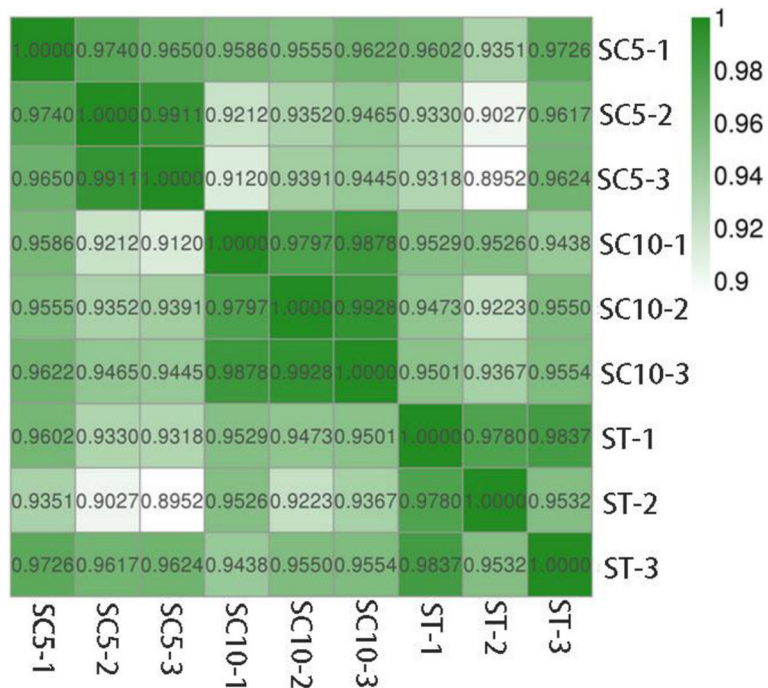


**Fig. 3** Transmission electron microscopy of starch granules in the tuber roots of the ST, SC10, and SC5, respectively

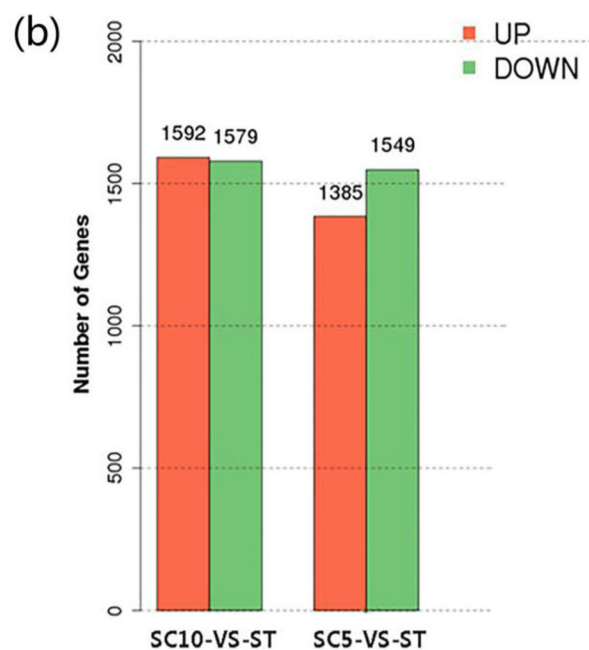
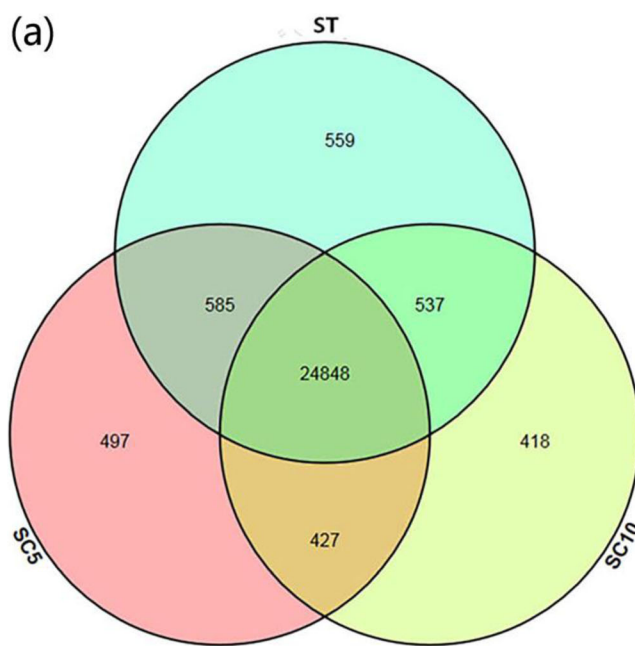
**Table 2** Statistical comparison of the obtained reads (after mapping to ribosomes and cassava reference genome)

Sample		Total Reads	Unmapped Reads	Unique Mapped Reads	Multiple Mapped Reads	Mapping Ratio
Sexual tetraploid	ST-1	45,643,992	9,383,481 (20.56%)	36,039,967 (78.96%)	220,544 (0.48%)	79.44%
	ST-2	43,351,046	8,404,178 (19.39%)	34,723,052 (80.10%)	223,816 (0.52%)	80.61%
	ST-3	45,864,544	8,783,710 (19.15%)	36,845,820 (80.34%)	235,014 (0.51%)	80.85%
Pollen parent	SC10-1	32,017,874	6,403,495 (20.00%)	25,466,457 (79.54%)	147,922 (0.46%)	80.00%
	SC10-2	39,603,108	7,917,056 (19.99%)	31,476,866 (79.48%)	209,186 (0.53%)	80.01%
	SC10-3	34,141,878	6,714,779 (19.67%)	27,256,093 (79.83%)	171,006 (0.50%)	80.33%
Female parent	SC5-1	38,473,060	7,372,557 (19.16%)	30,894,599 (80.30%)	205,904 (0.54%)	80.84%
	SC5-2	33,531,478	6,647,600 (19.82%)	26,672,456 (79.54%)	211,422 (0.63%)	80.18%
	SC5-3	38,578,920	7,598,678 (19.70%)	30,759,608 (79.73%)	220,634 (0.57%)	80.30%

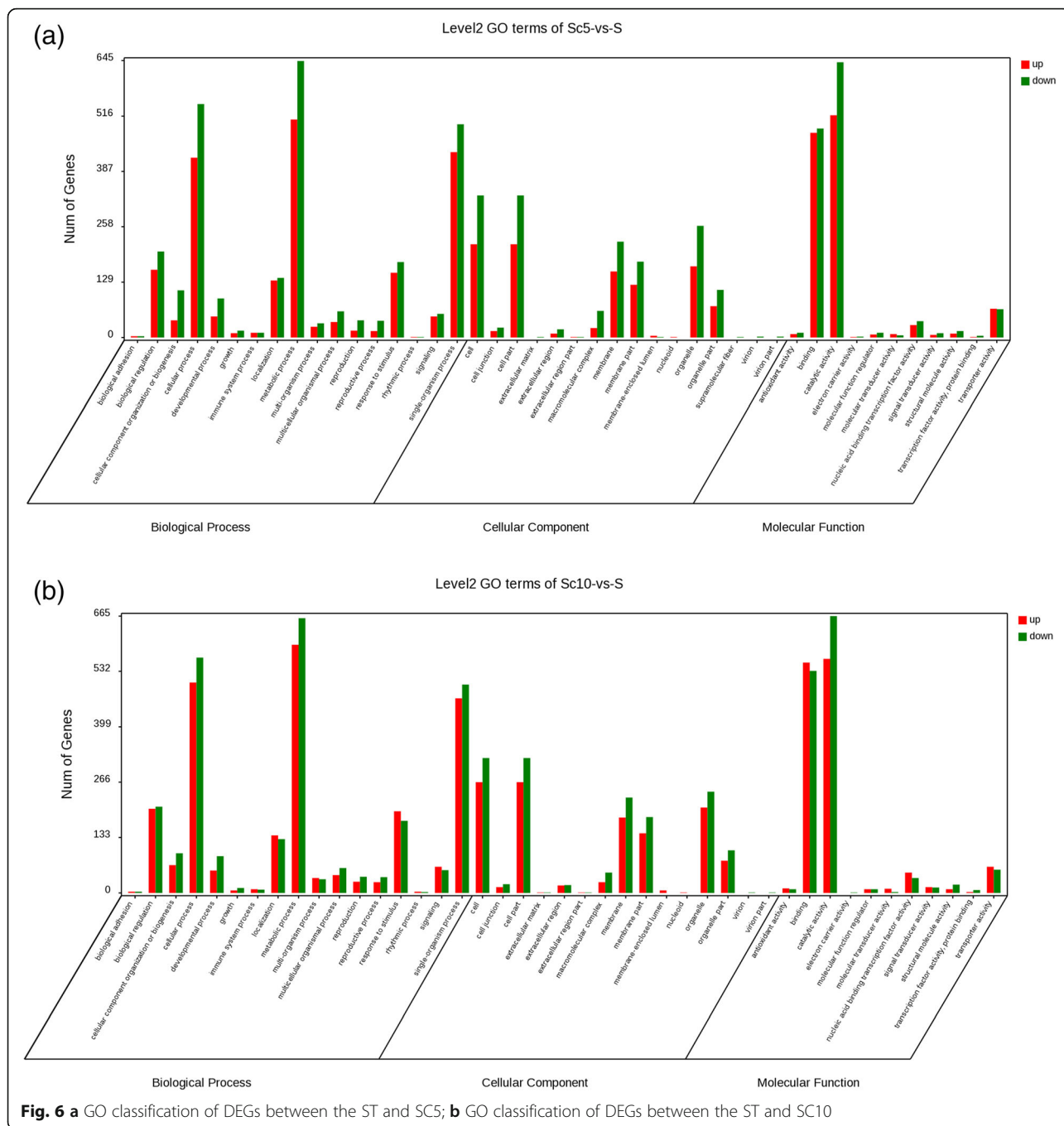
**Note:** Unmapped reads are the reads that cannot be mapped to the reference genome and their ratio of total reads. Unique mapped reads are the reads that are uniquely mapped to the reference genome and their ratio of total reads. Multiple mapped reads are the reads that are mapped to multiple locations of the reference genome and their ratio of total reads



**Fig. 4** The correlation heat maps among the three bioreplications for each variety. The abscissa and ordinate represent each sample, and each block of abscissa and ordinate represent the correlation between X and Y samples. The darkest (green) color in the graph represents the largest Pearson correlation coefficient between the X and Y samples and the lightest (white) color represents the smallest Pearson correlation coefficient between the X and Y samples



**Fig. 5 a** Venn diagrams for transcriptome analysis of the expressed genes detected in the three cassava varieties; **b** The histograms of differentially expressed gene between samples. Ascissa: pairs of samples; ordinate: number of differentially expressed genes; red represents up-regulated genes; green represents down-regulated genes

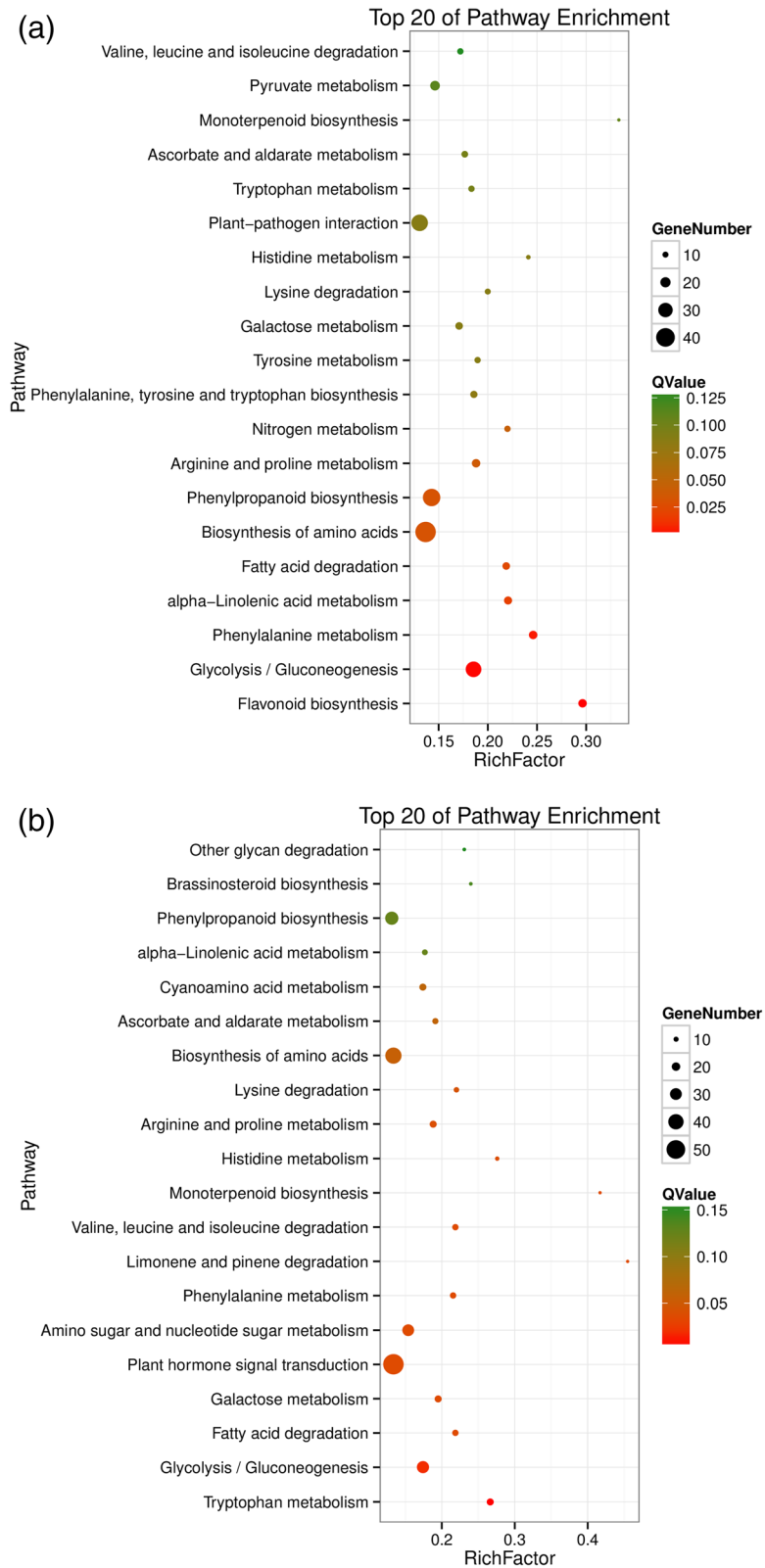


**Fig. 6 a** GO classification of DEGs between the ST and SC5; **b** GO classification of DEGs between the ST and SC10

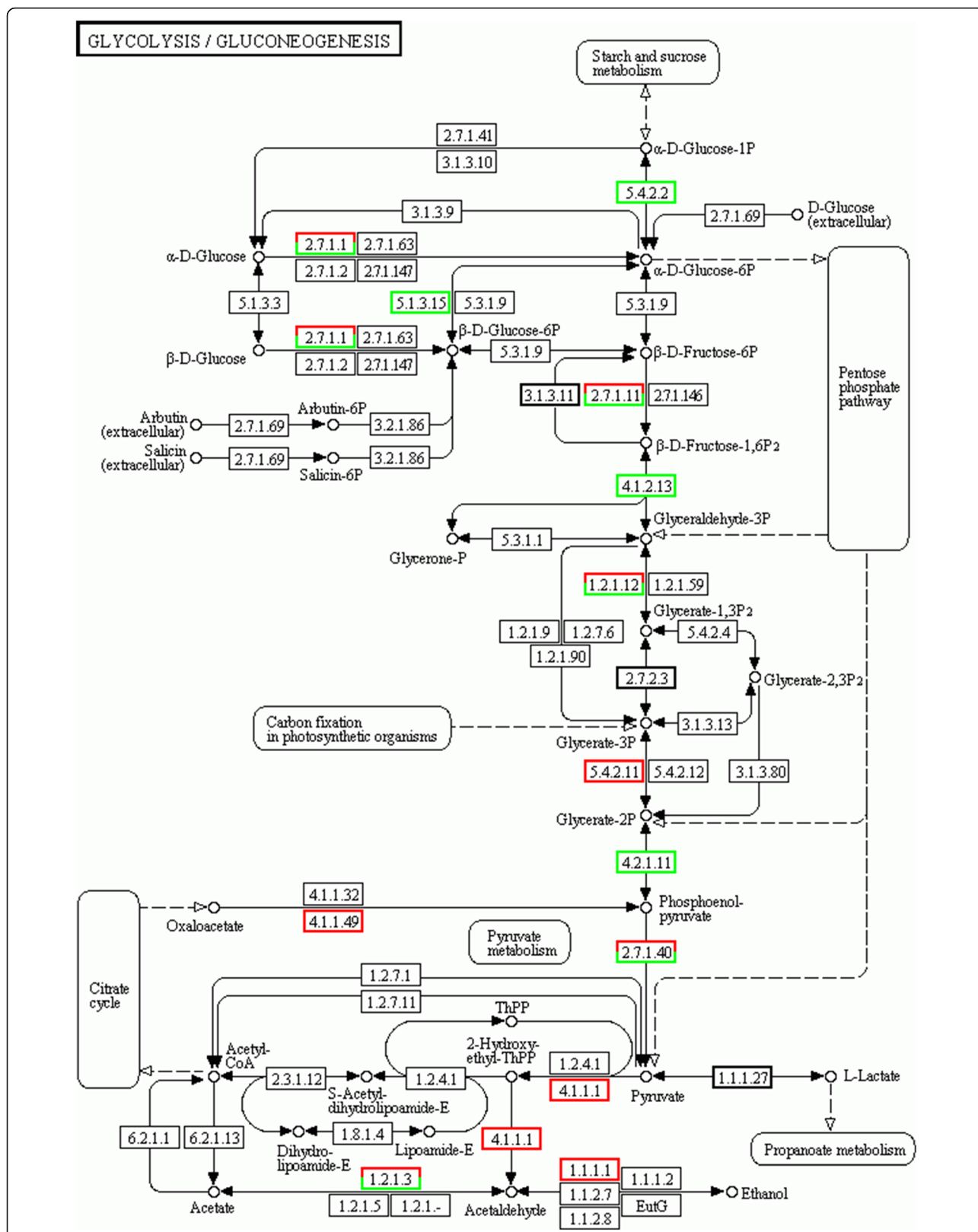
to the environment than somatic cells [46]. In the present study, we obtained artificial ST plants by artificially inducing  $2n$  gametes in female and male parents and hybridizing them [47]. We studied the characters of ST plants, and observed that they showed improved plant characters as compared to its parent plants. The leaves of ST plants were larger in size as compared to the parent plants: the leaf area was significantly higher, the petiole was longer, and the harvested organ roots in the expansion stage were also significantly higher than

diploid parents. We also observed a decrease in leaf number in ST plants, indicating the polyploid nature where plants are without branches. This trait can make cassava easily manageable in the field and is more conducive to dense planting of cassava. These findings show that the growth characters of cassava ST plants are consistent with that of general polyploids. Compared with asexual cassava polyploid, since the ST of cassava is hybridized by  $2n$  gamete pathway [47] and then directly developed through zygote, there is no chimerism. It will

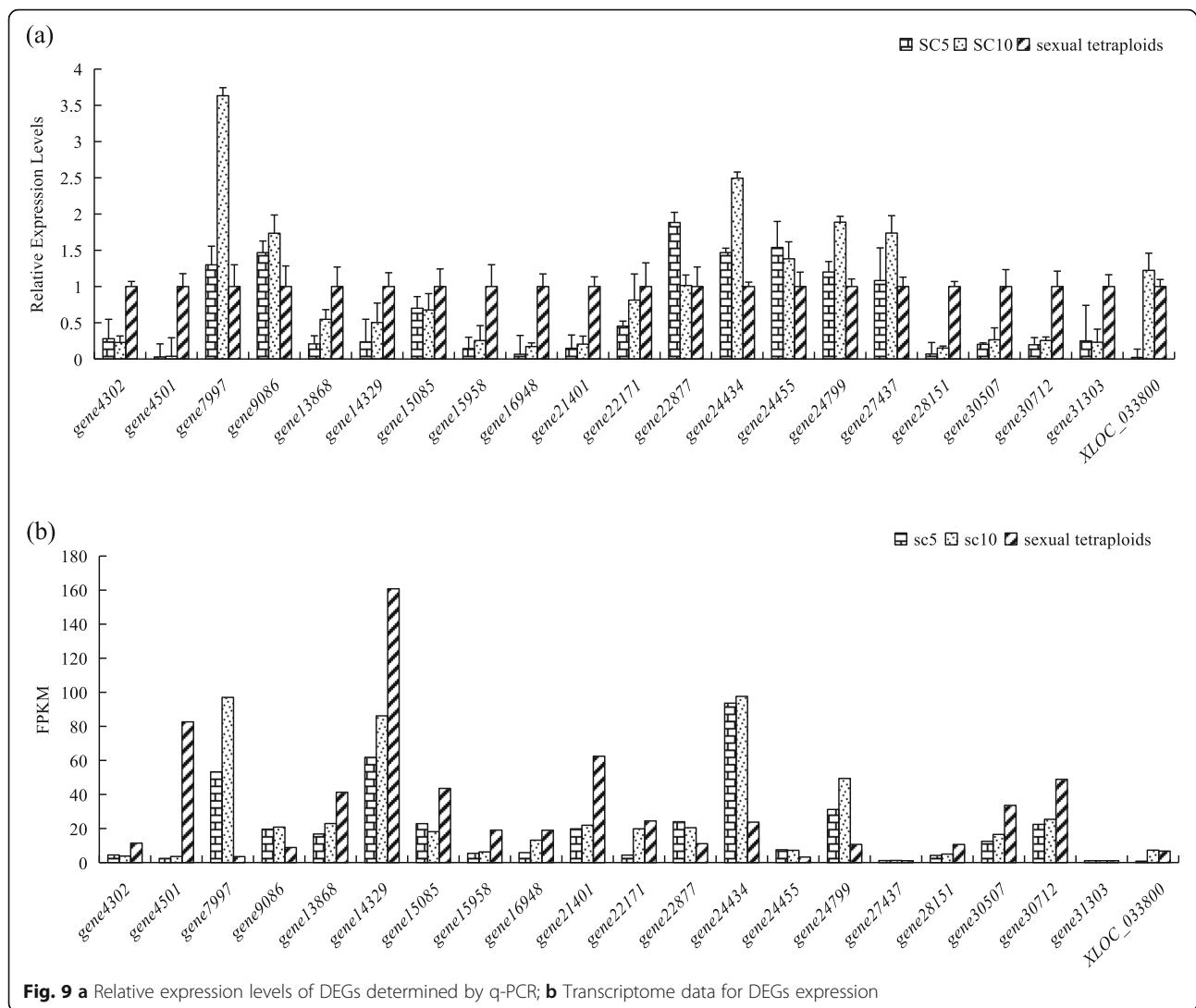




**Fig. 7 a** The top 20 of the KEGG pathway enrichment of DEGs between the ST and SC5; **b** The top 20 of KEGG pathway enrichment of DEGs between the ST and SC10



**Fig. 8** Glycolysis/gluconeogenesis pathway of the cassava roots; the positions of the up-regulated DEGs are marked in red, and the positions of the down-regulated DEGs are marked in green



**Fig. 9** **a** Relative expression levels of DEGs determined by q-PCR; **b** Transcriptome data for DEGs expression

not degenerate and return to diploidy in the process of reproduction. Its ploidy homozygosity and asexual reproduction stability have been verified in this study. It is worth mentioning that we did not observe flowering and fruiting in three generations of cassava ST clones, hence ST plant cannot be used as a hybrid parent to further obtain sexual triploid or other hybrids. Usually, after chromosome replication, the chromosomes in the cell nucleus show meiotic pairing disorder, resulting in reduced growth rate and infertility of the offspring, which is a common phenomenon in polyploid species [48]. Transmission electron micrographs showed many starch grains in ST plants in the root enlargement period (five months after planting), while the roots of the two parent plants almost had not even started to fill (Fig. 3). The early filling of starch grains might be associated with a higher leaf net photosynthetic rate. This is an important finding in selection of early-maturing cassava varieties.

Generally, the polyploid genome behavior impacts heterosis, and allopolyploids (both natural and synthetic) often exhibit “genomic superiority” [49, 50]. The phenotypic and physiological changes of polyploids result from the changes in gene expression after gene duplication to generate changed gene regulatory pathways [31, 36, 51–53]. In our study, we observed that some of these DEGs were involved in biological regulation, metabolic processes, localization, response to stimulus, and developmental processes. Our findings are in sync with that of the autotetraploid of *Morus alba* L. (mulberry) [42]. In *Paulownia fortunei* polyploidization, gene expression variation caused epigenetic-related changes [35, 43], and in *Betula platyphylla* (birch), the biosynthesis and signal transduction of indoleacetate (IAA) and ethylene were altered after genome duplication, which contributed to phenotypic changes [44]. Our results indicated that the number of genes in cassava did not change significantly after sexual tetraploidization, but the gene expression

changed, and the phenotype and physiological and biochemical changes in cassava STs might be regulated by these DEGs.

Our study on pathway enrichment analysis showed that two metabolic pathways flavonoid biosynthesis and glycolysis/gluconeogenesis showed significant differences in enrichment. The petiole and tuber root epidermis of ST plants were purple-red and dark brown, respectively, which were markedly different from those of their parents. The significantly enriched metabolic pathway of “flavonoid biosynthesis” might result in the changed color of the petioles and the root epidermis in ST plants due to accumulation of anthocyanins (flavonoids). The flavonoids also act as antioxidants in plant stress resistance: *Arabidopsis* showed oxidative and drought tolerances by overaccumulation of antioxidant flavonoids [54], the antibacterial activity of *Zingiber officinale* Rosc. (ginger) had a correlation with flavonoid content [55], postharvest physiological deterioration (PPD) of cassava roots was negatively correlated with phenolics and carotenoids and positively correlated with anthocyanins, flavonoids, and melatonin [56, 57]. The roots of ST plant were significantly enriched in “flavonoid metabolic pathways”. In a separate study we observed that its root tuber had stronger resistance to PPD than its parents. The photosynthetic rate, the ability to synthesize sucrose in cassava leaves, and the ability to utilize sucrose in cassava tuber roots play key roles in the process of starch accumulation in cassava [58–61]. The ST plant has a higher net photosynthetic rate than the parent plants and is significantly enriched in the metabolic pathway of glycolysis/gluconeogenesis that might affect its yield and slightly change the dry matter composition of its roots.

## Conclusions

The present study investigated the characters and genome-wide gene expression profiling of cassava sexual tetraploid and its diploid parents, with an aim to illustrate the molecular mechanisms of character changes after sexual polyploidization. Overall, the phenotype and physiological characters of cassava sexual tetraploids are different as compared their diploid parent plants, including greater biomass, higher photosynthetic rate, purple color of the petioles and the root epidermis and some other beneficial traits. The higher net photosynthetic rate and significantly enriched in glycolysis/ gluconeogenesis” metabolic pathways in cassava sexual tetraploids as compared to its parent plants might be associated with the early filling starch grains, increased yield, and dry matter composition of its roots. The significantly enriched flavonoid biosynthesis metabolic pathway might result in the changed color of the petioles and the root epidermis in the sexual tetraploids. Further research

on genes responsible for economically important agronomic traits in the sexual polyploids of cassava can help produce better varieties on a large scale, leading to bulk production of cassava starch not only for food purpose but also for non-food purposes such as in paper and pharmaceutical industries.

## Methods

### Plant materials

The experimental parent plant materials, *Manihot esculenta* Crantz South China No.5 (SC5) and 10 (SC10) were obtained from Institute of Tropical Crops Resources Research, the Chinese Academy of Tropical Agricultural Sciences. The cassava sexual tetraploid (ST) plants were obtained from hybridization between  $2n$  female (SC5) and  $2n$  male (SC10) gametes by the following methods:

1.  **$2n$  gamete induction:** Based on the correlation between the meiosis of cassava megaspore/ microspore mother cells and the morphological characteristics of inflorescence and pistil/ stamen, the pistil with 2.8–3.5 mm length/ stamen and 1.0–1.7 mm diameter, with most megaspore/ microspore mother cells in meiosis prophase I were selected to induce  $2n$  male (SC10) and female (SC5) gametes using 0.3% (w/v) colchicine and 1% (v/v) DMSO by dipping cotton.
2. **Hybridization:** In the flowering stage of cassava,  $2n$  female gametes (SC5) were used for interspecific hybridization with  $2n$  pollens (SC10).
3. **Uniform tetraploid selection:** Several hybrid mature seeds were collected, and sown to produce plants (F1); F1 were then propagated vegetatively to produce F2 clones, which in turn produced F3 clones. Identification of their ploidy and homozygosity was done by measuring DNA content and counting chromosome number from leaves of F1, F2, and F3 clones. The uniform tetraploid clones with stable phenotypes were used in the following experiments.

Three cassava plant materials (SC5, SC10, and ST) were propagated vegetatively in the Hainan University Agricultural College, Danzhou campus, Haikou, China. All biological replicates were selected randomly from different clones.

### Ploidy identification in hybrid plants

The ploidy and homozygosity of F1, F2 and F3 plants were identified by the following methods. The DNA content of leaves from the hybrid plant F1 and its diploid parent were evaluated by flow cytometry. A total of 0.5 g young leaves collected from near the top of the

cassava plants were, placed in a Petri dish with lysis buffer (45 mM  $MgCl_2$ , 30 mM sodium citrate, 20 mM MOPS, 0.1% v/v Triton X-100), then chopped with a blade, treated for 2–3 min, filtered with a 300 mesh filter to collect the filtrate, then centrifuged for 5 min at room temperature at 1500 rpm. The precipitate was dissolved in 1 mL of sheath fluid and centrifuged for 5 min at room temperature and 1500 rpm. Finally, the precipitate was mixed with 5 mL DAPI dye and stained for 0.5–2 h in dark conditions. The polyploid detection was performed using FACSC alibur Flow Cytometry (BD, USA), and data were analyzed using CellQuest Pro software. The diploid parent plants were used as controls.

The leaf chromosomal samples from the hybrid plants F1, F2, and F3 and their diploid parents were prepared by an enzymatic desorption method [62]. The bronze cassava leaves were collected between 9 am and 12 am, pretreated with p-dichlorobenzene saturated liquid at room temperature for 1–2 h, then rinsed 4–5 times with tap water and 3–5 times with distilled water. The leaves were then fixed in anhydrous ethanol and glacial acetic acid (3:1) for 10–24 h. The leaves were rinsed with distilled water 3–5 times for 5 min each time, then kept in distilled water for 30 min for prehypotonic infiltration. The enzyme hydrolysis of the leaves was performed with a mixture of enzymes (0.75% cellulase and 3.75% pectinase) at 37 °C for 2–4.5 h (the volume ratio of the leaves to enzyme was approximately 1:4). After gently and carefully washing the leaves with distilled water 2–3 times, they were then kept in distilled water for 30 min for low permeability; and were finally fixed for 15 min in the (anhydrous ethanol and glacial acetic acid as already discussed). The leaf was carefully put on a glass slide free from bubbles and was quickly crushed with a tweezer. The large pieces of residue were clipped out and air dried. Then, it was stained with 10% (w/v) Giemsa staining solution (pH 7.0) for 20 min. The excess dye was washed off with water, and the leaf was air dried. The cells in metaphase division were selected for chromosome number calculation under the microscope.

### Phenotyping

Phenotypes of the ST and its parent diploid plants were investigated in 5-month-old plants. The ST, SC5, and SC10 plants cultivated in a field for five months were selected for measuring of plant height, stem diameter, leaf area, petiole length, leaf number, leaf net photosynthetic rate, aboveground and underground plant weight, length and diameter of roots, and root dry matter rate. The fourth completely expanded leaf was selected for leaf measurements (leaf area, petiole length, leaf number, and leaf net photosynthetic rate), and the leaf area was calculated by using the scanning method and ImageJ

software. The net photosynthetic rate of the cassava leaves was detected by using a GFS-3000 Photosynthesis Tester (WALZ, Germany Products) [63]. Three biological samples each from ST, SC5, and SC 10 plants were randomly selected from three independent plants for each experimental analysis. Each experiment was carried out in triplicates.

The starch granules and amyloplasts in the tuberous roots of 5-month-old ST, SC5, and SC10 plants were observed under transmission electron microscopy [64]. Three samples each from ST, SC5, and SC 10 plants were randomly selected from three independent plants for each experimental analysis.

### RNA extraction and transcriptome sequencing

Total RNA was extracted from fresh tuberous roots of 5-month-old ST, SC5, and SC10 plants by using an Ominiplant RNA Kit (DNase1) (ComWin, Beijing, China) following the manufacturer's instructions. Three samples each from ST, SC5, and SC 10 plants were randomly selected from three independent plants for each experimental analysis. Each experiment was carried out in triplicates. The total mRNA was enriched by oligo (dT), then fragmented using fragmentation buffer and reversely transcribed into cDNA by using a NEB#7530 Kit (NEB#7530 Kit, New England Biolabs). The cDNA fragments were end repaired, poly(A) added, and ligated to Illumina sequencing adapters, then the products were purified with the AMPure XP Beads (1.0X) Kit following the manufacturer's instructions. Transcriptome sequencing was performed using Illumina Hi Seq TM2500 (Gene Denovo Biotechnology Co., Guangzhou, China).

### Alignment with the reference genome and transcript reconstruction

The original image data obtained through this sequencing were converted into raw data by base calling. To ensure the quality of data, the original data were performed before informatic analysis, and the redundant data were discarded through data filtering. After strictly filtering these clean reads, including the adapter-containing reads, more than 10% N reads, the low-quality reads (the bases with quality values  $Q \leq 20$  that accounted for more than 50% of the entire read), and finally, the high-quality clean reads were used for subsequent informatic analysis.

To further prevent ribosome contamination, a short-reads comparison tool Bowtie2 [65] was used to align high-quality clean reads with the ribosome database. After removing the reads belonging to ribosomes, the remaining data of each sample were aligned to the cassava reference genome by using the transcriptome data alignment software TopHat2 (v.2.0.3.12) for transcriptome assembly and further analysis. The

alignment parameters were as follows: maximum read mismatch was 2; the distance between mate-pair reads was 50 bp; the error of the distance between mate-pair reads was  $\pm 80$  bp [66, 67].

After aligning with the reference genome, the unmapped reads (or those poorly mapped) were re-aligned with Bowtie2. The enriched unmapped reads were split into smaller segments that were then used to search for potential splice sites. The sections and the positions of these short segments were predicted as well. A set of splice sites were built with initial unmapped reads by Top Hat2 without relying on the known gene annotation [68].

The reconstruction of the transcripts was carried out with Cufflinks, together with Top Hat2, to identify new genes and new splice variants of the known ones. The reference annotation-based transcript (RABT) algorithm was preferred. Cufflinks constructed faux reads according to the reference to make up for the influence of low coverage sequencing. All the reassembled fragments were aligned with the reference genes and the similar fragments were removed. Different replicas of each group were merged into a comprehensive set of transcripts by using Cuffmerge. The comprehensive transcripts from multiple groups were used for further downstream differential expression analysis.

### GO functional and KEGG pathway enrichment analysis of differentially expressed genes (DEGs)

To compare the differentially expressed genes (DEGs) in the ST and parent plants, the expression value of each gene was calculated using the fragments per kilobase of transcript per million mapped reads (FPKM) method. This method can eliminate the effect of differences in gene length and sequencing on gene expression, and the results can be directly used to compare gene expression differences between different samples. We used false discovery rate (FDR) (the  $P$  value after FDR corrected) and  $\log_2$  (FPKM<sub>ST</sub>/FPKM<sub>diploid</sub>) to screen for differential genes at FDR < 0.05 and  $|\log_2FC| > 1$ .

To further understand the function of DEGs between the ST and its parent plants, gene ontology (GO) and Kyoto encyclopedia of genes and genomes (KEGG) databases were used for functional enrichment classification of these genes. All DEGs were mapped to GO terms in the Gene Ontology database (<http://www.geneontology.org/>) to calculate the numbers of genes for each term, and significantly enriched GO terms in the DEGs compared to the genome background were defined by a hypergeometric test. The  $P$  value [69] is calculated as follows:

**Table 3** Primers used in qRT-PCR verification

Gene ID	Forward Primer (5' to 3')	Reverse Primer (3' to 5')
Gene 4501	ACACCGCAGGACAAGTCATTTCG	TGCCACCTCTACTTCTTCAATCACA
Gene 7997	CAGCCTTCCGCCTCCATTATC	GCAAGACGTTTCCCGCAGGTA
Gene 21,401	TGTCCAGCACTACGGGCTTGT	GAAACAATGGAGTCTGGCCCTTG
Gene 24,434	CTCTCTCCATCAAAGCTTCATCTTCT	CCTTCTTTCGAAGACCACTAGTTCCT
Gene 4302	TTGCTACCTTCTCCACTTCTCATC	CTTCACCGAGACATCCCAAAC
Gene 9086	TTATTTACCAGTAGCAAGGCTGTCTT	CCAGCACTTGAGGTCTTCTCAGAT
Gene 15,958	AAGGCTGCACTGATTGTTGTATTC	GGGCTAGCCAAGATAGGGTAAAC
Gene 24,455	CATGGCTAAGCACAGGAGTGAGA	AGCTGGTGTACTTGGCAAGACG
Gene 24,799	ACGGGTAACAGTTCAGGAGAC	GCCACAAGCTAATGCAGGACCAA
Gene 27,437	ATCGAGATCTCTCTTCCATTTTC	TAACCTTAATATCACGGTGTCTCCA
Gene 28,151	GAAATGAACGGTGAACAGAGG	ACAGCTTTTCGACCATAGGCAC
Gene 30,507	GGAGAGTGTAGGAGAGGATGTAGATG	CAGTTTTGAACAAAGGTGCTCTTC
Gene 31,303	CTGAAGCAGAGAAAGAGAGAAAGA	AAATAATGGATTCTGACCCTTAGCC
Gene 16,948	ATCTCGTACAAAGGGAGACCAATT	AGCGTACCCTGCATTTAGCTCGTTA
Gene 13,868	TTACAGCTCCTGTAAACCCATC	ACATCTGTCCAATCCTTTACTCGC
Gene 14,329	TCCTGTCTCCTGCCTTTCCTCTA	TCATACTGTCCACAACACGAGTAAC
Gene 22,171	CAACAGGATGGCTTGTCAACACT	CCTTCAAGAGGCTACCGGAGTGT
Gene 22,877	GACTGAGAATCACAGGGCACTAAA	AAGAGCAGAAGCAGAAGCAGAAGT
Gene 30,712	ATCTCGTACAAAGGGAGACCAATT	CCGAGGTAGAAGAGTCTGAGGATTAG
XLOC_033800	TTACAGCTCCTTGTAAACCCATC	CTTGGGTCTTAGCTTCTCTTT
Gene15085	TCCTGTCTCCTGCCTTTCCTCTA	GACCGAGAGTGGATTCATGAGAG

$$P = 1 - \frac{\sum_{i=0}^{m-1} \binom{M}{i} \binom{N-M}{n-i}}{N^n}$$

where,  $N$  is the number of all genes with GO annotation,  $n$  is the number of DEGs in  $N$ ,  $M$  is the number of all genes that were annotated to certain GO terms, and  $m$  is the number of DEGs in  $M$ .

Pathway enrichment analysis was identified by the Kyoto encyclopedia of genes and genomes (KEGG) database. The  $P$  value [63] is calculated in the same manner as in the GO term analysis. In this formula,  $N$  is the number of all genes with KEGG annotation,  $n$  is the number of DEGs in  $N$ ,  $M$  is the number of all genes annotated to specific pathways, and  $m$  is the number of DEGs in  $M$ .

The raw data of the cassava transcriptome used here have been deposited in the SRA database of the NCBI (accession number SRP151951).

#### Real-time quantitative RT-PCR (q-PCR) verification

Total RNA was extracted from tuberous roots of three cassava plant materials (SC5, SC10, and ST) using RNAgen Plus plant total RNA extraction reagent (Tiangen Biochemical Technology Co., Ltd., Beijing, China) according to manufacturer's instructions, and then reverse transcription was performed. The relative mRNA expression of the DEGs was analyzed by qRT-PCR using a set of gene-specific primers (Table 3) that were designed based on BLAST analysis of the cassava genome database (<http://www.phytozome.net/cassava>). The reverse transcription and qRT-PCR reaction system and specific operation steps refer to our published paper [70]. Three technical replicates for each sample were analyzed.

#### Abbreviations

SC5: *Manihot esculenta* Crantz South China No.5; SC10: *Manihot esculenta* Crantz South China No.10; ST: Cassava sexual tetraploid; DMSO: Dimethyl sulfoxide; DEGs: Differentially expressed genes

#### Supplementary Information

The online version contains supplementary material available at <https://doi.org/10.1186/s12870-021-02963-1>.

#### Additional file 1.

#### Acknowledgements

The authors would like to thank TopEdit ([www.topedit.com](http://www.topedit.com)) for its linguistic assistance during the preparation of this manuscript.

#### Authors' contributions

The study was conceived by XC, HG-L, JC-G, and XW-H. XC drafted the manuscript. XC, HG-L, and RM-L are equally contributed and conducted most of the work for cassava sexual tetraploid characterization. YY and RM-L were responsible for mapping of transcriptome data. XC, HG-L, YY, RM-L, and JL were responsible for analysis of differentially expressed genes. XC, HG-L, and SY were also involved in phenotypic measurement and polyploid screening.

HG-L and SP-F provided advices on characterization of the cassava sexual tetraploid. RM-L provided advices on transcriptome data analysis. YY, XC, and HG-L designed experiments for cassava sexual tetraploid characterization and transcriptome analysis. XC and HG-L were involved in manuscript editing. All authors read and approved the final manuscript.

#### Funding

This work was financially supported by the National Key R&D Program of China (2019YFD1001105), the funding agency had role in study design; National Natural Science Foundation of China (No. 31760408, 31671767), the funding agency had role in study design and preparation of the manuscript; the Earmarked Fund for Modern Agro-industry Technology Research System (No. CARS-11-hngjc), the funding agency had role in study design; Central Public-interest Scientific Institution Basal Research Fund for Chinese Academy of Tropical Agricultural Sciences (No.1630052020009, 1630052020010), the funding agency had role in data collection and analysis.

#### Availability of data and materials

The datasets supporting the conclusions of this article are available in the SRA database of NCBI repository (accession number: SRP151951).

#### Declarations

#### Ethics approval and consent to participate

Not applicable.

#### Consent for publication

Not applicable.

#### Competing interests

The authors declare that they have no competing interests.

Received: 21 June 2020 Accepted: 7 April 2021

Published online: 19 April 2021

#### References

- Lebot V, Atherton J, Rees A. Tropical root and tuber crops: cassava, sweet potato, yams and aroids: CABI; 2008.
- Nma N, Ortiz R. Cassava improvement: challenges and impacts. *J Agric Sci*. 2007;145(145):163–71.
- Feng X, M-R XU, Zhang L, Li N-H. A literature review on cassava-biofuels industrialization. *Chinese Agricultural Sci Bull*. 2010;26(10):375–80.
- Lai H-G, Zhuang N-S. Advances in research on cassava polyploid breeding. *J Tropical Organisms*. 2010;01(4):380–5.
- Ye J-Q. Progress of cassava breeding in China. *Tropical Agricultural Sci*. 2009; 11:115–9.
- Sang KH, Bai VK, Robert A. Spontaneous Somatic Tetraploids in Cassava. *Japanese J Breeding*. 1992;42(2):303–8.
- Feng H-Y. The Study on Transcriptome of Tuberous Root in Wild Species and Cultivar of Cassava: Hainan University; 2014.
- Peng J, Wei Y-R, Xiong X-H. Polyploid induction of plant research summary. *Chinese Agricultural Science Bulletin*. 2010;26(11):45–9.
- Sun M-H, Zhang S-N. Application of Polyploid breeding in horticultural crops. *Jiangsu Agricultural Science*. 2004;1:68–72.
- Zhang C. Preliminary study on Autotetraploid induction and anti-canker disease characteristics of Hongyang kiwifruit: XiNan University; 2011.
- Chen X-S, Wei L-J, Tian Y-N, Lu Z-S, Pan H. Regeneration of polyploidy plants of cassava induced with Colchicines. *Chinese J Trop Agric*. 2008; 28(1):17–20.
- Wang J-L. Research on cassava Polyploid breeding technique: GuangXi University; 2008.
- An F-F, Fan J, Li Y-H, Jian C-P, Li K-M. Comparison of leaves proteome and chlorophyll fluorescence of cassava cv. SC8 and its Tetraploid mutants. *Sci Agric Sin*. 2013;46(19):3978–87.
- Zhang J. Studies on Polyploid induction of cassava in vitro: HaiNan University; 2012.
- Ramanna MS, Jacobsen E. Relevance of sexual polyploidization for crop improvement - a review. *Euphytica*. 2003;133(1):3–8. <https://doi.org/10.1023/A:1025600824483>.

16. Younis A, Hwang YJ, Lim KB. Exploitation of induced  $2n$ -gametes for plant breeding. *Plant Cell Rep.* 2014;33(2):215–23. <https://doi.org/10.1007/s00299-013-1534-y>.
17. Lim KB. Homoeologous recombination in interspecific hybrids of *Lilium*. *Korean J Breeding.* 2003;35:8–12.
18. Barbagonzalez R, Lim KB, Ramanna MS, Tuyl JMV. Use of  $2n$  gametes for inducing intergenomic recombination in lily hybrids. *Acta Horticulturae.* 2005;(673):161–6.
19. Dewitte A, Laere KV, Huylenbroeck JV. Use of  $2n$  gametes in plant breeding: InTech; 2012.
20. Mai H, Kato J, Ohashi H, Mii M. Unreduced  $3x$  gamete formation of allotriploid hybrid derived from the cross of *Primula denticulata* ( $4x$ )  $\times$  *P. rosea* ( $2x$ ) as a causal factor for producing pentaploid hybrids in the backcross with pollen of tetraploid *P. denticulata*. *Euphytica.* 2009;169(1): 123–31.
21. Lyrene PM, Vorsá N, Ballington JR. Polyploidy and sexual polyploidization in the genus *Vaccinium*. *Euphytica.* 2003;133(1):27–36. <https://doi.org/10.1023/A:1025608408727>.
22. Zhang Z, Kang X. Cytological characteristics of numerically unreduced pollen production in *Populus tomentosa* Carr. *Euphytica.* 2010;173(2):151–9. <https://doi.org/10.1007/s10681-009-0051-0>.
23. Zhang Y-Y. Rubber tree fruit setting law and triploid induction: Beijing Forestry University; 2013.
24. Carputo D, Barone A, Frusciantè L.  $2n$  gametes in the potato: essential ingredients for breeding and germplasm transfer. *Theoretical & Applied Genetics.* 2000;101(5–6):805–13. <https://doi.org/10.1007/s001220051547>.
25. Qiu C-L, Bai Y-M, Lv W-H, Xu X-P, Li Y, Lv D-Q. Improvement of potato protein Content Using unilateral sexual Polyploidization. *Crops.* 2009;4: 23–6.
26. Carputo D, Barone A. Ploidy level manipulations in potato through sexual hybridisation. *Ann Appl Biol.* 2015;146(1):71–9.
27. Zhao Y, Liu W-L, Zheng S-X, Xiao Y-Q. Studies on sexual Polyploidization of tulips induced by colchicine. *Northern Horticulture.* 2006;6:135–6.
28. Zhong C, Zhang S-N, Yu X-H, Li Y, Hou X-L, Li S-J. Studies on the induction of  $2n$  gamete in Chinese cabbage and the production of Tetraploid by sexual Polyploidization. *Acta Horticulturae Sinica.* 2010;37(11):001789–95.
29. Wang X-F, Cai M, He D, Ren X-X, Wang X-Y, Pan H-T, et al. A preliminary report on  $2n$  gamete induction of crape myrtle in: Research progress on ornamental horticulture in Chin;2010; 2010.
30. Lai HG, Chen X, Chen Z, Ye JQ, Li KM, Liu JP. Induction of female  $2n$  gametes and creation of tetraploids through sexual hybridization in cassava (*Manihot esculenta*). *Euphytica.* 2015;201(2):265–73. <https://doi.org/10.1007/s10681-014-1207-0>.
31. Leitch AR, Leitch IJ. Genomic plasticity and the diversity of polyploid plants. *Science.* 2008;320(5875):481–3. <https://doi.org/10.1126/science.1153585>.
32. Salmon A, Ainouche ML, Wendel JF. Genetic and epigenetic consequences of recent hybridization and polyploidy in *Spartina* (Poaceae). *Mol Ecol.* 2005; 14(4):1163–75. <https://doi.org/10.1111/j.1365-294X.2005.02488.x>.
33. Zheng Y, Georg H, Michaela M, Thomas R, Klaus FXM, Alfons G. Impact of natural genetic variation on the transcriptome of autotetraploid *Arabidopsis thaliana*. *Proc Natl Acad Sci U S A.* 2010;107(41):17809–14.
34. Li X, Yu E, Fan C, Zhang C, Fu T, Zhou Y. Developmental, cytological and transcriptional analysis of autotetraploid *Arabidopsis*. *Planta.* 2012;236(2): 579–96. <https://doi.org/10.1007/s00425-012-1629-7>.
35. Zhang X, Deng M, Fan G. Differential Transcriptome analysis between *Paulownia fortunei* and its synthesized autopolyploid. *Int J Mol Sci.* 2014; 15(3):5079–93. <https://doi.org/10.3390/ijms15035079>.
36. Harper AL, Trick M, Higgins J, Fraser F, Clissold L, Wells R, et al. Associative transcriptomics of traits in the polyploid crop species *Brassica napus*. *Nat Biotechnol.* 2012;30(8):798–802. <https://doi.org/10.1038/nbt.2302>.
37. Jiang J, Shao Y, Du K, Ran L, Fang X, Wang Y. Use of digital gene expression to discriminate gene expression differences in early generations of resynthesized *Brassica napus* and its diploid progenitors. *BMC Genomics.* 2013;14(1):1–11.
38. Hovav R, Udall JA, Chaudhary B, Hovav E, Fligel L, Hu G, et al. The evolution of spinnable cotton fiber entailed prolonged development and a novel metabolism. *PLoS Genet.* 2008;4(2):e25. <https://doi.org/10.1371/journal.pgen.0040025>.
39. Ran H, Faigenboimdorón A, Kadmon N, Hu G, Zhang X, Gallagher JP, et al. A Transcriptome Profile for Developing Seed of Polyploid Cotton. *Plant Genome.* 2015;8(1):1–15.
40. Buggs JJA, Doust AN, Tate JA, Koh J, Soltis K, Feltus FA, et al. Gene loss and silencing in *Tragopogon miscellus* (Asteraceae): comparison of natural and synthetic allotetraploids. *Heredity.* 2009;103(1):73–81. <https://doi.org/10.1038/hdy.2009.24>.
41. Chopra R, Burrow G, Farmer A, Mudge J, Simpson CE, Burrow MD. Comparisons of De Novo Transcriptome Assemblers in Diploid and Polyploid Species Using Peanut (*Arachis* spp.) RNA-Seq Data. *PLoS One.* 2014; 9(12):e115055.
42. Dai F, Wang Z, Luo G, Tang C. Phenotypic and Transcriptomic analyses of Autotetraploid and diploid mulberry (*Morus alba*L.). *Int J Mol Sci.* 2015;16(9): 22938–56. <https://doi.org/10.3390/ijms160922938>.
43. Fan G, Wang L, Deng M, Niu S, Zhao Z, Xu E, et al. Transcriptome analysis of the variations between autotetraploid *Paulownia tomentosa* and its diploid using high-throughput sequencing. *Mol Gen Genomics.* 2015;290(4):1627–38. <https://doi.org/10.1007/s00438-015-1023-9>.
44. Mu HZ, Liu ZJ, Lin L, Li HY, Jiang J, Liu GF. Transcriptomic analysis of phenotypic changes in birch (*Betula platyphylla*) Autotetraploids. *Int J Mol Sci.* 2012;13(10):13012–29. <https://doi.org/10.3390/ijms131013012>.
45. Mu H-Z. Transcriptomic analysis of growth and reproductive changes in birch (*Betula platyphylla*) Autotetraploids: Northeast Forestry University; 2013.
46. Otto SP, Whitton J. Polyploid incidence and evolution. *Annu Rev Genet.* 2000;34(1):401–37. <https://doi.org/10.1146/annurev.genet.34.1.401>.
47. Lai G-H. Research on induction of cassava Polyploid through  $2n$  gametes: Hainan University; 2014.
48. Bretagnolle F, Thompson J D: gametes with the somatic chromosome number: mechanisms of their formation and role in the evolution of autopolyploid plants. *New Phytol.* 2010;129(1):1–22.
49. Freeling M, Woodhouse M R, Subramaniam S: fractionation mutagenesis and similar consequences of mechanisms removing dispensable or less-expressed DNA in plants. *Curr Opin Plant Biol.* 2012;15(2):131–9. <https://doi.org/10.1016/j.pbi.2012.01.015>.
50. Fligel LE, Wendel JF. Evolutionary rate variation, genomic dominance and duplicate gene expression evolution during allotetraploid cotton speciation. *New Phytol.* 2010;186(1):184–93. <https://doi.org/10.1111/j.1469-8137.2009.03107.x>.
51. Adams KL. Evolution of duplicate gene expression in Polyploid and hybrid plants. *J Hered.* 2007;98(2):136–41. <https://doi.org/10.1093/jhered/esl061>.
52. Plata G, Rodríguez Zapata F, Sakurai T, Seki M, Salcedo A, Tohme MJ, et al. Computational analysis of the cassava transcriptome, gene discovery and regulatory element prediction. *Int J Comput Math.* 2008;92(9):1729–32.
53. Hegarty MJ, Barker GL, Brennan AC, Edwards KJ, Abbott RJ, Hiscock SJ. Changes to gene expression associated with hybrid speciation in plants: further insights from transcriptomic studies in *Senecio*. *Philos Trans R Soc Lond Ser B Biol Sci.* 2008;363(1506):3055–69. <https://doi.org/10.1098/rstb.2008.0080>.
54. Nakabayashi R, Yonekurasakakibara K, Urano K, Suzuki M, Yamada Y, Nishizawa T, et al. Enhancement of oxidative and drought tolerance in *Arabidopsis* by overaccumulation of antioxidant flavonoids. *Plant J.* 2014; 77(3):367–79. <https://doi.org/10.1111/tpj.12388>.
55. Hartati R, Suganda AG, Fidrianny I, Ginting TM. Total flavonoid content and antimicrobial properties of four species of Zingiberaceae. *Int J Pharm Pharmaceutical Sci.* 2014;6(7):142–4.
56. Uarrota VG, Moresco R, Coelho B, Nunes EDC, Peruch LAM, Neubert EDO, et al. Metabolomics combined with chemometric tools (PCA, PLS-DA and SVM) for screening cassava (*Manihot esculenta* Crantz) roots during postharvest physiological deterioration. *Food Chem.* 2014;161(6):67–78. <https://doi.org/10.1016/j.foodchem.2014.03.110>.
57. Hu W, Kong H, Guo Y, Zhang Y, Ding Z, Tie W, et al. Comparative physiological and Transcriptomic analyses reveal the actions of melatonin in the delay of postharvest physiological deterioration of cassava. *Front Plant Sci.* 2016;7(e0136993):736.
58. Zhang Y. photosynthesis in aspect of physiology, structure and transcriptome in leaf of cassava (*Manihot esculenta*): HaiNan University; 2012.
59. Lu L-Y, Cao S, Xie X-Y, Ceng W-D, Yan H-B. Correlation of leaf shape of cassava with SPAD value and photosynthetic characteristics. *Journal of Southern Agriculture.* 2014;45(4):558–64.
60. Zhu Y-M, Luo X-L, Yan G-B, Fan W-J. Relationship between sucrose's synthesis, distribution and the starch accumulation in the root tuber of cassava. *Guihaia.* 2016;12:1492–7.
61. Siriwat W, Kalapanulak S, Suksangpanomrung M, Netphan S, Meechai A, Saithong T. Transcriptomic data integration inferring the dominance of



- starch biosynthesis in carbon utilization of developing cassava roots. *Procedia Computer Sci.* 2012;11(12):96–106. <https://doi.org/10.1016/j.procs.2012.09.011>.
62. Wang C, Wang J-F, Zhuang N-S, Wang Y. Optimization of chromosome spreading technique in cassava root tip cells. *Chin J Trop Crops.* 2012;33(4): 627–30.
  63. Zhang Z-W, Zheng Y-Q, Ye J-Q, Li K-M. Study on photosynthetic characteristic for cassava leaves. *Southwest China J Agricultural Sci.* 2009; 22(2):000300–3.
  64. Min Y, Yao Y, Wang J, Hu X-W, Guo J-C. Observation on the structure and development of amyloplast in early stage of cassava storage root with scanning electronic microscope. *J Chin Electron Microsc Soc.* 2010;29(4): 379–84.
  65. Langmead B, Trapnell C, Pop M, Salzberg SL. Ultrafast and memory-efficient alignment of short DNA sequences to the human genome. *Genome Biol.* 2009;10(3):R25. <https://doi.org/10.1186/gb-2009-10-3-r25>.
  66. Kim D, Pertea G, Trapnell C, Pimentel H, Kelley R, Salzberg SL. TopHat2: accurate alignment of transcriptomes in the presence of insertions, deletions and gene fusions. *Genome Biol.* 2013;14(4):R36. <https://doi.org/10.1186/gb-2013-14-4-r36>.
  67. Guo R, Chen H-Z, Du Y, Zhou D-D, Geng S-H, Wang H-P, Zhu Z-W, Shi C-Y, Wan J-Q, Xiong C-L, Zheng Y-Z, Chen D-F. Genome-wide identification of long non-coding RNAs and their regulatory networks involved in *Apis mellifera* ligustica response to *Nosema ceranae* infection. *BioRxiv* 2019, doi. org/<https://doi.org/10.1101/643627>.
  68. Trapnell C, Williams B-A, Pertea G, Mortazavi A, Kwan G, van Baren MJ, et al. Transcript assembly and quantification by RNA-Seq reveals unannotated transcripts and isoform switching during cell differentiation. *Nat Biotechnol.* 2010;28(5):511–5. <https://doi.org/10.1038/nbt.1621>.
  69. Abdi H. Bonferroni and Sidak corrections for multiple comparisons. *Encyclopedia of Measurement and Statistics.* 2007:103–7.
  70. Yao Y, Geng M-T, Wu X-H, Liu J, Li R-M, Hu X-W, et al. Genome-wide identification, 3D modeling, expression and enzymatic activity analysis of Cell Wall Invertase gene family from cassava (*Manihot esculenta* Crantz). *J Mol Sci.* 2014;15(5):7313–31. <https://doi.org/10.3390/jjms15057313>.

## Publisher's Note

Springer Nature remains neutral with regard to jurisdictional claims in published maps and institutional affiliations.

**Ready to submit your research? Choose BMC and benefit from:**

- fast, convenient online submission
- thorough peer review by experienced researchers in your field
- rapid publication on acceptance
- support for research data, including large and complex data types
- gold Open Access which fosters wider collaboration and increased citations
- maximum visibility for your research: over 100M website views per year

**At BMC, research is always in progress.**

Learn more [biomedcentral.com/submissions](https://biomedcentral.com/submissions)

