

Research article

Open Access

Expression pattern of a nuclear encoded mitochondrial arginine-ornithine translocator gene from *Arabidopsis*

Elisabetta Catoni¹, Marcelo Desimone¹, Melanie Hilpert¹, Daniel Wipf¹, Reinhard Kunze², Anja Schneider², Ulf-Ingo Flügge², Karin Schumacher¹ and Wolf B Frommer*¹

Address: ¹Plant Physiology, ZMBP, Auf der Morgenstelle 1, D-72076 Tübingen, Germany and ²Botany Institute II, University of Cologne, Gyrhofstr. 15, D-50931 Cologne, Germany

Email: Elisabetta Catoni - elisabetta.catoni@zmbp.uni-tuebingen.de; Marcelo Desimone - marcelo.desimone@zmbp.uni-tuebingen.de; Melanie Hilpert - melanie.hilpert@zmbp.uni-tuebingen.de; Daniel Wipf - daniel.wipf@zmbp.uni-tuebingen.de; Reinhard Kunze - reinhard.kunze@uni-koeln.de; Anja Schneider - anja.schneider@uni-koeln.de; Ulf-Ingo Flügge - ui.fluegge@uni-koeln.de; Karin Schumacher - karin.schumacher@zmbp.uni-tuebingen.de; Wolf B Frommer* - frommer@zmbp.uni-tuebingen.de

* Corresponding author †Equal contributors

Published: 7 January 2003

Received: 4 November 2002

BMC Plant Biology 2003, **3**:1

Accepted: 7 January 2003

This article is available from: <http://www.biomedcentral.com/1471-2229/3/1>

© 2003 Catoni et al; licensee BioMed Central Ltd. This is an Open Access article: verbatim copying and redistribution of this article are permitted in all media for any purpose, provided this notice is preserved along with the article's original URL.

Abstract

Background: Arginine and citrulline serve as nitrogen storage forms, but are also involved in biosynthetic and catabolic pathways. Metabolism of arginine, citrulline and ornithine is distributed between mitochondria and cytosol. For the shuttle of intermediates between cytosol and mitochondria transporters present on the inner mitochondrial membrane are required. Yeast contains a mitochondrial translocator for ornithine and arginine, Ort1p/Arg11p. Ort1p/Arg11p is a member of the mitochondrial carrier family (MCF) essential for ornithine export from mitochondria. The yeast *arg11* mutant, which is deficient in Ort1p/Arg11p grows poorly on media lacking arginine.

Results: High-level expression of a nuclear encoded *Arabidopsis thaliana* homolog (*AtmBAC2*) of Ort1p/Arg11p was able to suppress the growth deficiency of *arg11*. RT-PCR analysis demonstrated expression of *AtmBAC2* in all tissues with highest levels in flowers. Promoter-GUS fusions showed preferential expression in flowers, i.e. pollen, in the vasculature of siliques and in aborted seeds. Variable expression was observed in leaf vasculature. Induction of the promoter was not observed during the first two weeks in seedlings grown on media containing NH_4NO_3 , arginine or ornithine as sole nitrogen sources.

Conclusion: *AtmBAC2* was isolated as a mitochondrial transporter for arginine in *Arabidopsis*. The absence of expression in developing seeds and in cotyledons of seedlings indicates that other transporters are responsible for storage and mobilization of arginine in seeds.

Background

In most organisms, amino acid metabolism is distributed between at least two compartments: cytosol and mitochondria. In addition, plastids contribute significantly to amino acid metabolism of plants [1]. For instance in

plants, biosynthesis, conversion and degradation of arginine, ornithine and citrulline are distributed across mitochondria, plastids and cytosol [2].

In many plants, arginine is stored in seeds as a major nitrogen source, e.g. in *Arabidopsis thaliana* arginine accounts for 11% of total seed nitrogen [2]. During seed germination, stored arginine is degraded for conversion into transport forms (e.g. glutamine or glutamate). The enzyme arginase, which catalyzes degradation of arginine to ornithine and urea is localized in mitochondria [3]. Thus arginine needs to be imported into mitochondria to allow mobilization. Transport steps across the mitochondrial membranes are also required during biosynthesis. In yeast, ornithine, a precursor of arginine, is synthesized in mitochondria from glutamate, which is imported from the cytosol. Ornithine is transferred to the cytosol before conversion to arginine. Additionally, arginine needs to be imported into mitochondria to allow mitochondrial protein synthesis. Ornithine serves as an intermediate of arginine and proline metabolism, and of the ureide citrulline. In plants, ornithine serves also a precursor for polyamine and alkaloid biosynthesis [4]. Thus also in various other metabolic pathways, transport of arginine, ornithine and also citrulline is required. Although mitochondrial in- and efflux of citrulline was originally described in rat liver and heart [5], it has not been described in plants.

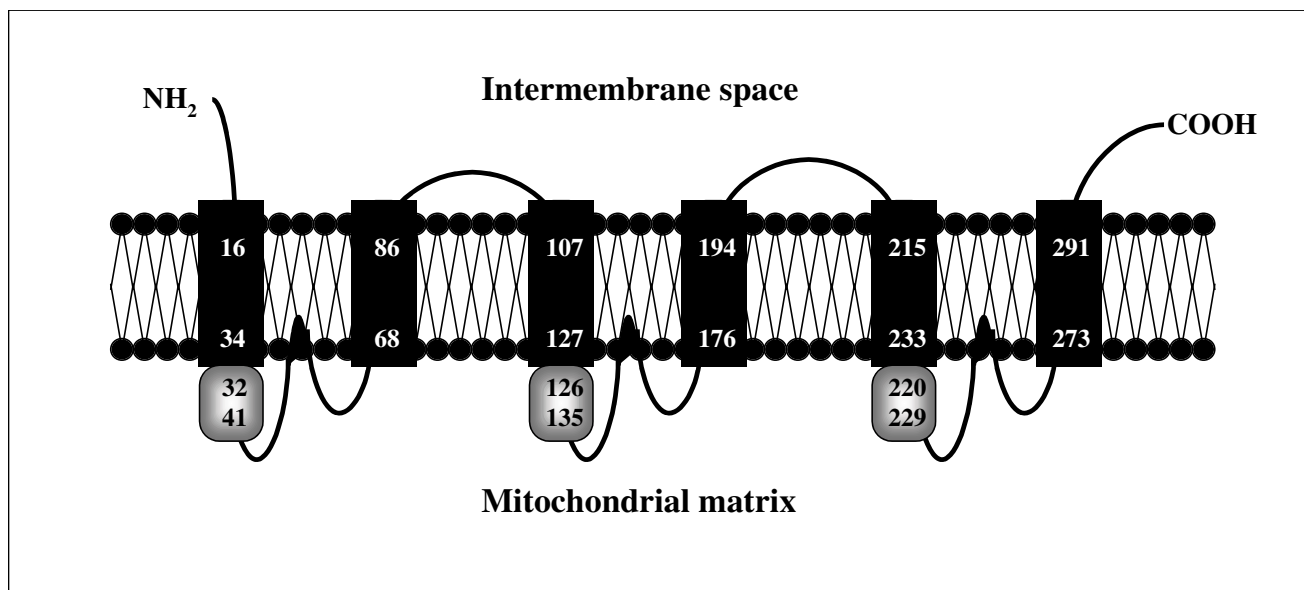
Thus for metabolite exchange and coordination of all these pathways, multiple carriers must be present on the inner mitochondrial membrane of the different organisms. In the yeast genome, 35 members of the mitochondrial carrier family (MCF) were identified; 12 of them were characterized in terms of substrate specificity [6]. MCF proteins have similar structural features: a relatively low molecular mass of around 30 kDa, a tripartite structure (three repeats of about 100 amino acids), each consisting of two transmembrane-helices separated by a hydrophilic loop. Furthermore, a consensus sequence [P-X-(DE)-X-(LIVAT)-(RK)-X-(LRH)-(LIVMFY)], called the "mitochondrial energy signature", is present in all carriers in one to three copies at the C-terminal end of the first helix of each repeat [7]. Most transporters belonging to this family function as antiporters. A combination of transport studies in mitochondria [8,9] and reconstitution of carriers expressed in *E. coli* lead to the identification of the first mammalian mitochondrial carrier gene belonging to the MCF family [10]. Since then, mitochondrial transporter genes encoding various predicted transport systems have been identified in yeast and human genomes [11-14].

The *Arabidopsis* genome contains at least 48 members of the MCF family, 7 with 3 copies of the mitochondrial energy transfer signature, 21 with two copies and 20 with one copy. Until now, only few plant MCF carriers have been characterized [11]: the adenine nucleotide translocators [15,16], uncoupling proteins [17,18] and recently also a dicarboxylate-tricarboxylate carrier named DTC

[19] and a succinate transporter [20]. However, despite their importance none of the postulated plant mitochondrial transporters for amino acids has been identified, such as proline transporters for the compartmentalized proline metabolism [21], GABA transporters for the GABA shunt [22], glutamate/aspartate transporters for photorespiratory exchange with peroxisomes or ornithine/arginine carriers for arginine metabolism that were biochemically characterized in isolated soybean mitochondria [3].

A yeast *arg11* mutant unable to synthesize arginine was identified [23]. The corresponding gene was cloned by complementation of the *arg 11* mutant, revealing that Arg11p is a member of MCF. On the basis of amino acid content of the mutant, it was suggested that ARG11p would function as an mitochondrial ornithine translocator of yeast [24]. The properties of Ort1p were characterized after expression in *E. coli* and subsequent reconstitution. The major function of Ort1p/Arg11p is ornithine export from mitochondria. Ort1p/Arg11p mediates electroneutral antiport of ornithine, arginine and lysine, and with lower efficiency also ornithine/H⁺ antiport [25]. Since mitochondria of an *arg11* deletion mutant retained arginine/ornithine carrier activity, a second transporter for basic amino acids named Bac1 was postulated [26]. Sequence homologies to the yeast gene were used to identify the human ORNT1 transporter and to demonstrate that the HHH syndrome (Hyperornithinaemia-Hyperammoniaemia-Homocitrullinuria) is due to defects in the respective gene [27]. In the case of citrullinaemia, a different member of the MCF family was defective [28], namely the aspartate/glutamate carrier [29]. Yet another amino acid carrier identified by reconstitution in liposomes was the human glutamate transporter [14]. However in yeast, and despite extensive attempts, none of the crucial carriers for amino acids or other metabolites was identified in genetic studies apart from *arg11*, *acr1* and *dic1*, i.e. mutants have been found for all metabolic steps in many of the amino acid pathways but not the respective mutations in mitochondrial carriers. Since the yeast genome contains a large number of MCF proteins one may hypothesize that transporters have overlapping substrate specificities and yeast may thus be able to compensate loss of single MCF genes.

To date, the most efficient approach to identify plant plasma membrane transporters has been suppression cloning in yeast mutants. Since in most cases mitochondrial transporters do not contain identifiable targeting sequences, it remained open whether yeast complementation may be a suitable tool to identify the plant homologs. Searches in the *Arabidopsis* genome identified a gene 32% identical to the yeast Ort1p/Arg11p. The *Arabidopsis* gene *AtmBAC2*, when expressed in yeast, was able to restore growth of the yeast *arg11* mutant on media lacking ar-

**Figure 1**

Structural model of AtmBAC2. The prediction was performed using the TMHMM program <http://www.cbs.dtu.dk/services/TMHMM-2.0>. Six hydrophobic domains are depicted as black boxes and the three mitochondrial energy transfer signatures as grey boxes (amino acid positions are given).

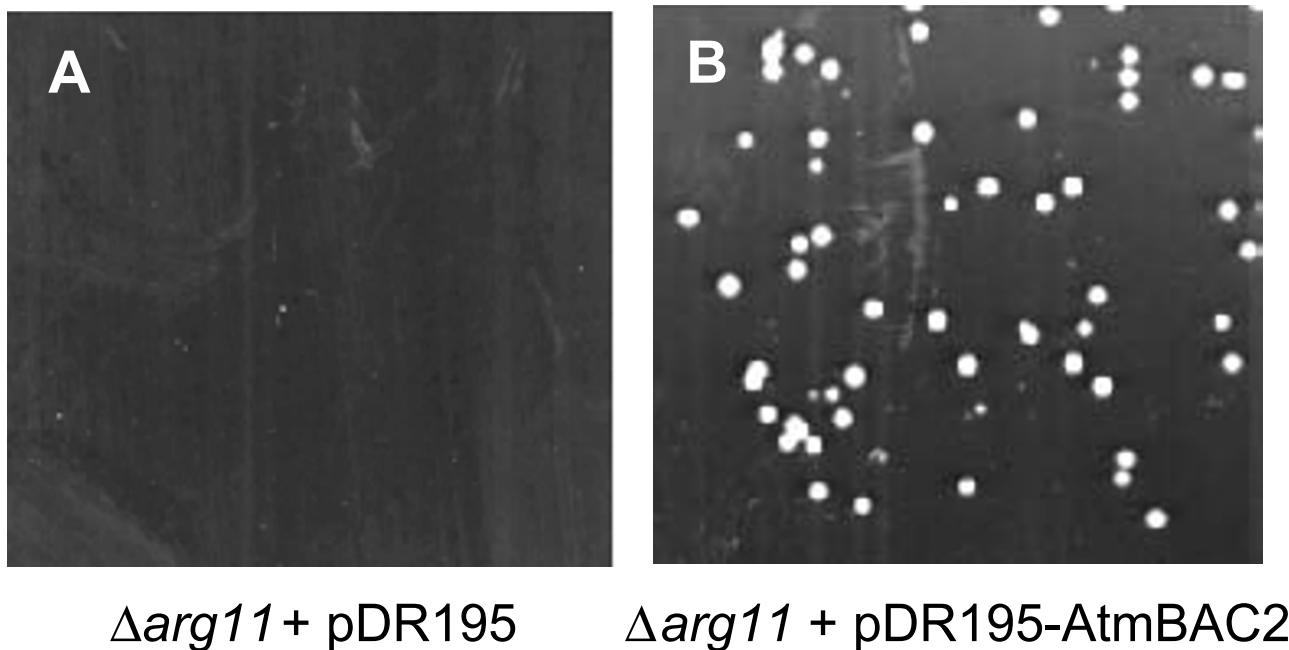
ginine, indicating that AtmBAC2 catalyzes the export of ornithine from mitochondria to the cytosol. RT-PCR analysis and promoter-GUS fusions were used to study expression and regulation of *AtmBAC2*. Absence of expression in developing seeds and in cotyledons of seedlings indicated that, in addition to AtmBAC2, another transporter, supposedly *AtmBAC1* [30], is involved in storage and mobilization of arginine.

Results and Discussion

Complementation of the yeast *arg11* mutant by a plant cDNA

The yeast mutant *arg11* is bradytrophic for arginine, due to deletion of the mitochondrial transporter for ornithine, an intermediate in arginine metabolism [24]. To identify a corresponding Arabidopsis transporter gene, the *arg11* yeast mutant was transformed with an Arabidopsis cDNA library in the yeast expression vector pFL61 [31]. Around 10⁶ transformants were screened for growth on a medium lacking arginine. Potentially due to the background growth of the bradytroph mutant, no genes able to complement the yeast *arg11* mutant were found. Therefore, a homology search was carried out with the ORT1p/Arg11p sequence from *Saccharomyces cerevisiae* against the predicted protein sequences encoded by the Arabidopsis genome and in the Aramemnon [32] integral membrane protein database <http://aramemnon.botanik.uni-koeln.de>. Two

putative proteins AtmBAC1 and AtmBAC2 encoded by the loci At5g46800 and At1g79900 respectively scored highest similarity values. By RT-PCR, the *AtmBAC2* cDNA corresponding to the locus At1g79900 was cloned. *AtmBAC2* encodes a protein of 296 amino acids with a calculated molecular mass of 32 kDa that shares 32% identity and 52% similarity with the yeast ORT1p/Arg11p protein. Hydrophobicity analysis of the polypeptide (HMMTOP 2.0; <http://www.enzim.hu/hmmtop/>) predicted six putative membrane spanning domains, consistent with the known structures of MCF carriers [33]. Six other programs predict between zero (soluble) and five transmembrane spans [32]. In general, the prediction of transmembrane spans in case of MCF carriers is problematic since hydrophobic domains are present, however, confidence levels are below the assumed critical value. Thus, such proteins would be missing from databases, which rely solely on membrane protein predictions. The structural prediction is supported by the presence of "mitochondrial energy transfer signatures" after the first, third, and fifth transmembrane domains. The combination of homology searches, hydrophobicity analysis and the presence of the signature motif indicate that AtmBAC2 comprises all features of the mitochondrial carrier family (Fig. 1). AtmBAC2 does not contain a predicted targeting sequence for import into mitochondria, similar to many

**Figure 2**

Functional complementation of yeast. The yeast strain Y02386 (*arg11*) was transformed with the empty vector pDR195 (A), or with *AtmBAC2* cloned in pDR195 (B).

other mitochondrial proteins belonging to the MCF family.

The *AtmBAC2* cDNA was cloned in the yeast vectors pFL61, containing the *PGK* promoter, and pDR195, with the stronger *PMA1* promoter fragment. When expressed from the *PMA1* promoter, *AtmBAC2* was able to efficiently complement the yeast arginine bradytrophism (Fig. 2). Similar experiments using the comparatively weaker *PGK* promoter showed only weak complementation, i.e. slower growth as compared to cells expressing *AtmBAC2* under control of the *PMA1* promoter (data not shown). To study the substrate specificity, *AtmBAC2* was fused to a his-tag and the fusion protein was expressed under the strong *PMA1* promoter fragment in yeast. Mitochondria were isolated and *AtmBAC2* was purified as a 32 kDa polypeptide (data not shown). Functional reconstitution can be used to characterize the properties of *AtmBAC2* in detail [12]. In a parallel study, Hoyos *et al.* [30] identified *AtmBAC1*, a closely related ornithine transporter. *AtmBAC1* was successfully reconstituted into artificial proteoliposomes and was able to carry out ornithine/ornithine exchange as well as exchange of various amino acids against arginine. *AtmBAC1* showed a preference for

basic amino acids with highest affinity for arginine and lysine, but transported also histidine. Thus *AtmBAC1*, similar to many other characterized MCF transporters, is promiscuous. This may reflect that transporters do not have a binding pocket, but filtering and recognition probably take place along the translocation pathway within the pore. From an evolutionary perspective, the low selectivity may be advantageous since mutations would allow rapid adaptation to changes in compartmentation of metabolism. However, the modulation of substrate specificity makes it difficult to define the physiological function based only on the sequence. The promiscuity may also explain why so far only few mutants in mitochondrial carrier functions have been identified, e.g. *arg11* in yeast or the disease related HHH syndrome.

So far, the most efficient methodology to characterize mitochondrial transporters was a candidate gene approach. Candidates were expressed in *E. coli* [19], purified proteins were reconstituted in lipid vesicles and transport properties were determined [34]. The approach is difficult and laborious and no standard protocols applicable for all candidates are available [12]. Therefore, an alternative method was developed allowing identification of mito-

chondrial carriers via suppression of auxo- or bradytrophic phenotypes of yeast mutants. Although there is no evidence for a mitochondrial targeting sequence in the *AtmBAC2* sequence, and little is known about signals for import of nuclear encoded proteins in the mitochondria of yeast and plants, the yeast import mechanisms are able to recognize also plant mitochondrial proteins and target them to mitochondria. In this way, the identification of *AtmBAC2* and of *AtmBAC1* [30] from *Arabidopsis* as ornithine carriers confirms the validity of yeast complementation for the functional assignment of candidate genes.

Phylogenetic tree of MCF translocators

A detailed analysis of transporter databases indicates that the *Arabidopsis* MCF family is highly divergent and a full alignment showed only eight perfectly conserved residues. Since a similarity tree branches into two major clades plus a few single and very distantly related members, the phylogenetic analysis was carried out with the subgroup containing the amino acid transporters, several other *Arabidopsis* MCF members and selected fungal and mammalian members falling into the same branch (Fig. 3). These selected polypeptides can be classified into six major clades: (i) amino acid carriers, (ii) two clades of di- and tricarboxylate carriers, (iii) uncoupling proteins (UCPs), and (iv) at least two groups of carriers for which no function has been assigned yet (Fig. 3). Within the amino acid carriers, the *Saccharomyces* Ort1p/Arg11p and related transporters from *Neurospora* and *Aspergillus* are most closely related to the *Arabidopsis* *AtmBAC2* and *AtmBAC1*, whereas glutamate and glutamate/aspartate carriers are more distantly related [14,29]. No other *Arabidopsis* proteins fall into this clade. Interestingly, the mammalian carnitine transporter [35] also belongs to the amino acid carrier clade, being more closely related to the basic amino acid transporters. Since so far no evidence exists for carnitine transport in plants, one may predict that the other members of this clade and those belonging to the groups of unknown transporters may be candidates for the missing carrier involved in amino acid transport functions in mitochondria.

Expression pattern of *AtmBAC2* in *Arabidopsis*

To study the expression pattern of *AtmBAC2*, total RNA was extracted from different tissues of *Arabidopsis thaliana* plants grown in soil. As the expression level was too low to be detected by RNA gel blot analysis, RT-PCR was carried out. *AtmBAC2* expression was found in all tissues analyzed, with highest transcript levels in flowers (Fig. 4a). To investigate a potential influence of the nitrogen source on the expression of *AtmBAC2*, RT-PCR was carried out on mRNA extracted from *Arabidopsis* seedlings grown on nitrogen-free MS medium supplemented with different inorganic and organic nitrogen sources NH_4NO_3 , arginine or ornithine. Material was harvested at different develop-

mental stages. *AtmBAC2* was expressed at higher levels in a medium supplemented with arginine or ornithine as compared to NH_4NO_3 (Fig. 4b). A slight increase in expression was observed also under conditions of nitrogen starvation (Fig. 4b). The regulation and expression pattern are compatible with a role of *AtmBAC2* in arginine and ornithine catabolism of mitochondria.

To study the tissue specificity in more detail, the *AtmBAC2* promoter region was isolated. The promoter was cloned as a longer 2 kb and a shorter 1.5 kb fragment as transcriptional fusions with GUS. In both cases, the expression pattern of independent transformants was comparable. While expression was undetectable in seedlings, first GUS activity was detectable in three-week-old plants (Fig. 5A,5B,5C,5D,5E). The discrepancy between promoter-GUS analysis and RT-PCR in seedlings may be due to higher sensitivity of the RT-PCR or due to missing regulatory elements present e.g. in the intron of *AtmBAC2*. Leaf veins showed patchy staining, in some cases at the leaf rims (Fig. 5F,5G). Consistent with RT-PCR, histochemical GUS analysis showed elevated expression levels in flowers, specifically in stamens and petals (Fig. 5H,5I), and both developing and germinating pollen (Fig. 5J, data not shown). Furthermore, expression was observed in siliques in the main vasculature and in aborted seeds, but not in developing seeds (Fig. 5K,5L,5M).

Basic amino acid transporters in the inner mitochondrial membrane are supposed to play roles in arginine metabolism in developing seedlings and during the mobilization of proteins, e.g. during seed germination. Unexpectedly, no expression was found in developing seeds or in young seedlings during germination, suggesting that a different carrier, potentially *AtmBAC1*, might be responsible for these processes [30]. Proline represents by far the most abundant amino acid in pollen [36]. Thus the expression of *AtmBAC2* in pollen may be taken as a hint that arginine can serve as a precursor for proline biosynthesis, since arginase is localized in mitochondria, and thus arginine has to be taken up into mitochondria. Alternatively, the expression pattern may also be relevant for other metabolic pathways since ornithine can also serve as a precursor for polyamine and alkaloid biosynthesis [4].

Conclusions

Functional expression of a candidate gene under control of a strong promoter allowed identification of a plant mitochondrial transporter for basic amino acids. This carrier seems to have overlapping, but different functions as *AtmBAC1* in the plant. The study also pinpoints candidates for the missing amino acid transport systems in plant mitochondria. RNAi studies together with *knock-out* mutants will enable a detailed physiological characterization of the mitochondrial compartmentation of amino

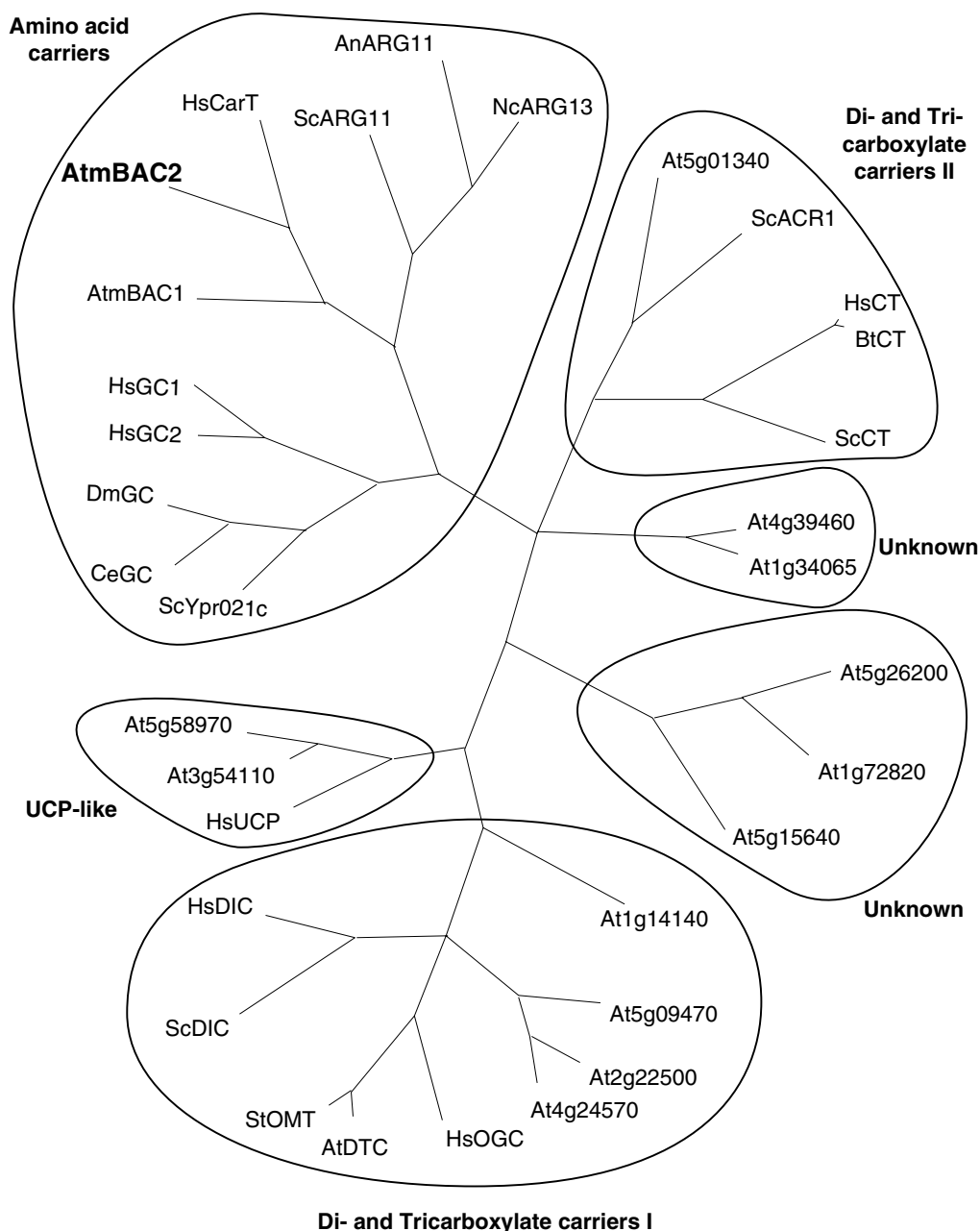


Figure 3

Phylogenetic analyses of AtmBAC2 and other mitochondrial carriers. The alignment was restricted to the conserved domains (between pos. 11 and 259 in AtmBAC2 amino acid sequence). Maximum parsimony analyses were performed using PAUP 4b10 with all amino acid characters unweighted and gaps scored as missing characters. Heuristic tree searches were executed using 1000 random sequence additions and the tree bisection-reconnection branch-swapping algorithm with random sequence analysis. The complete alignment was based on 342 sites; 306 were phylogenetically informative. At5g01340, NP195754; ScACR1, CAA80973; HsCT, NP005975; BtCT, P79110; ScCT, NP009850; At4g39460, NP568060; At1g34065, NP564436; At5g26200, NP197992; At1g72820, NP565048; At5g15640, NP568317; At1g14140, NP172866; At5g09470, NP196509; At2g22500, NP179836; At4g24570, NP194188; HsOGC, NP003553; AtDTC, CAC84549; StOMT, X99853; ScDIC, AAB71336; HsDIC, NP036272; HsUCP, NP003346; At3g54110, NP190979; At5g58970, NP568894; ScYpr021c, NP015346; CeGC, NP497274; DmGC, AAF57048; HsGC1, CAD21007; HsGC2, CAD21008; AtmBAC1, NP568670; AtmBAC2, NP178108; HsCarT, O43772; ScARG11, CAA60862; AnARG11, AAD44763; NcARG13, AAF87777.

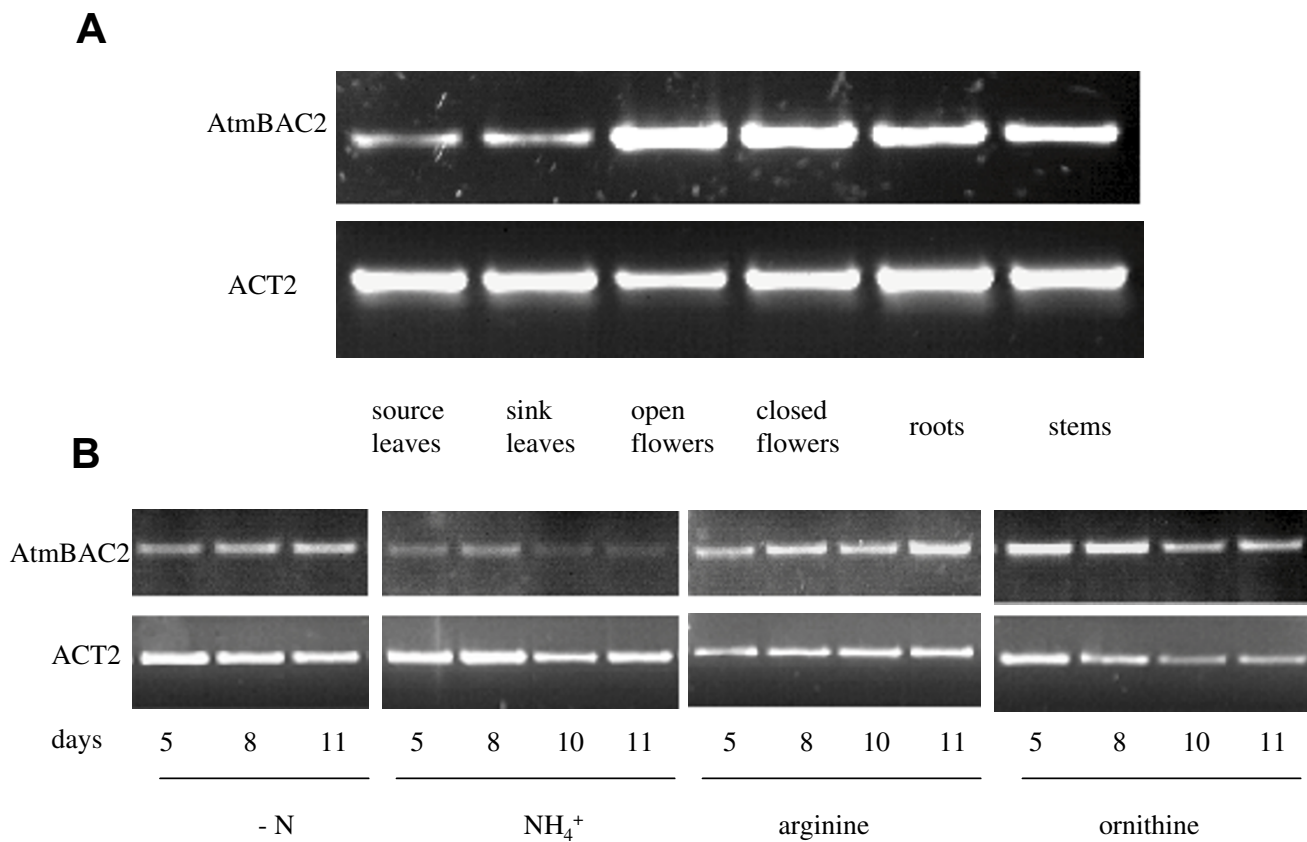


Figure 4
Expression of *AtmBAC2* mRNA expression in different *Arabidopsis* organs (A) and in whole seedlings grown on different nitrogen sources (B). RNAs were extracted and converted to cDNA by reverse transcription, and a 267 bp *AtmBAC2* fragment was amplified by 25 PCR cycles. As control, a 377 bp actin2 fragment was amplified simultaneously by 20 PCR cycles (ACT2).

acid biosynthesis. The studies also demonstrate that in addition to the 53 potential amino acid transporters for plasma membrane and tonoplast [37], plants contain additional carriers for organellar compartmentation.

Methods
Yeast strains

The yeast strain Y02386 [Mat α ; his3 Δ 1; leu2 Δ 0; lys2 Δ 0; ura3 Δ 0; YOR130c::kanMX4] from Euroscarf (Frankfurt, Germany), carrying a deletion of the yeast gene *ARG11*, was used for yeast complementation. Selective conditions for Y02386 were established by using yeast nitrogen base without amino acids and ammonium sulfate (Difco, Heidelberg, Germany) supplemented with (mg L⁻¹): 5000 (NH₄)₂SO₄, 20 histidine, 100 leucine, 20 methionine with 2% glucose and eventually 50 uracil in case of untransformed yeast. As negative control Y02386 was transformed with the empty vector pDR195 [38].

Cloning of the *AtmBAC2* gene and yeast transformation

AtmBAC2 cDNA was amplified by PCR on an *Arabidopsis* cDNA library (ecotype Landsberg; [31]) using primers spanning the predicted ORF from ATG to stop: 5'-agcctc-gagatggattctggccggagtattatg, containing a *Xho*I restriction site and 5'-ttcggatcctcaatcctctgtgacaatc, containing a *Bam*HI restriction site. The PCR product was restricted with *Xho*I and *Bam*HI and ligated into the yeast expression vector pDR195. The resulting plasmid was amplified in *E. coli* DH5 and transferred into Y02386, according to Gietz *et al.* [39]. cDNA and protein sequence were deposited in Genbank under the accession number AC011717_10.

Plant material and mRNA expression

Arabidopsis thaliana L. Heynh. ecotype Col-0 was used for plant studies. For organ specificity studies, all plant organs were harvested from plants grown in soil in the greenhouse with the exception of roots, which were obtained from plants cultured on MS agar plates. For expression

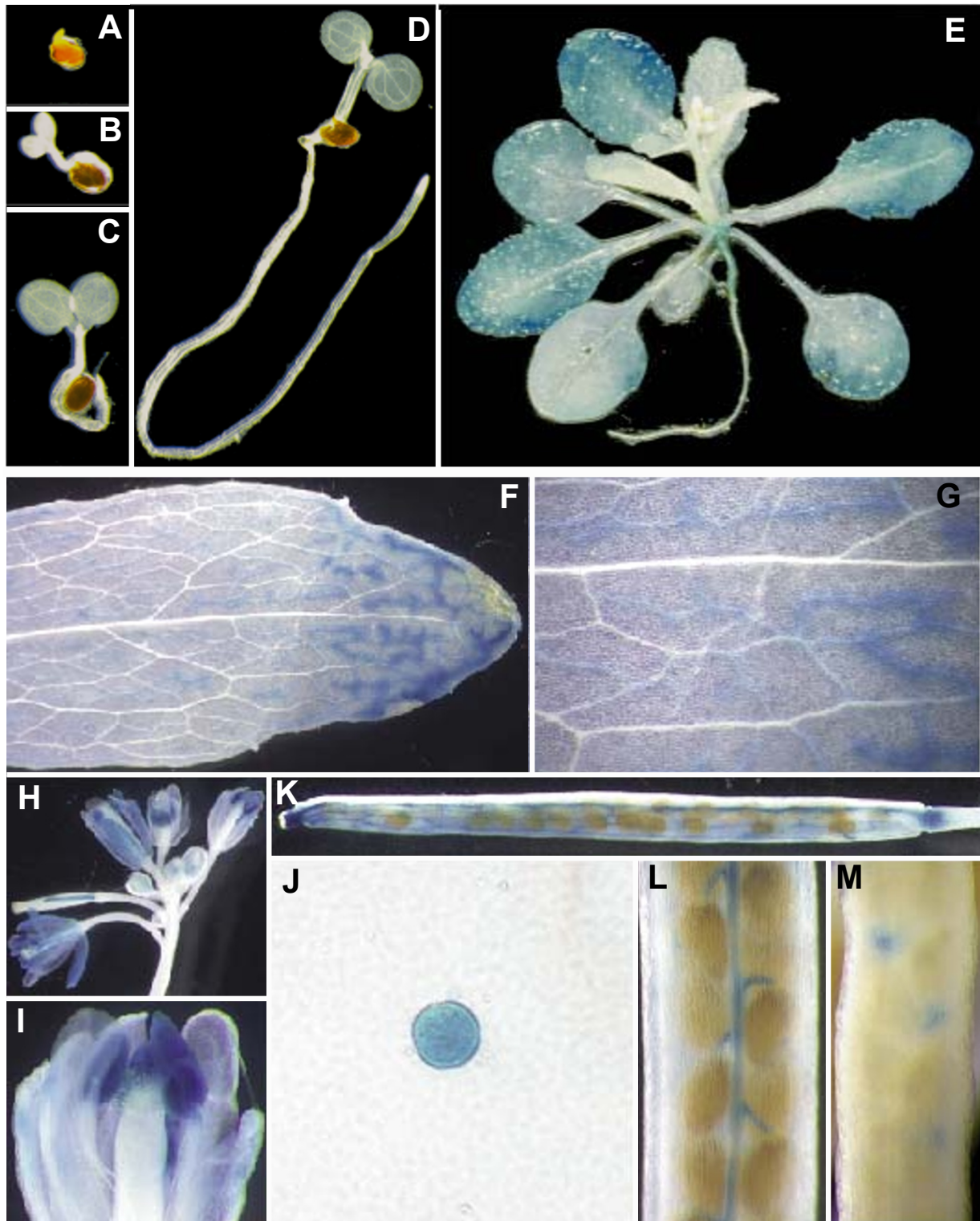


Figure 5
GUS staining of Arabidopsis plants transformed with the *AtmBAC2* promoter-GUS fusion. Histochemical analysis revealed promoter activity in 1, 2, 4, 7 and 21 days old plants (**A** to **E**). Details of expression in mature leaves (**F** and **G**); activity in inflorescences and flower (**H** and **I**), individual pollen grains (**J**) and siliques (**K** to **M**).

studies with different nitrogen sources, *Arabidopsis* seeds were placed on sterile N-free MS-medium supplied with 10 mM nitrogen either as NH_4NO_3 , arginine or ornithine. After 5, 8, 10 and 11 days, plants were harvested and total RNA extracted. For RT-PCR analysis, RNAs were converted to cDNA using Retroscript (Ambion) following the manufacturer's instructions. A 267 bp cDNA fragment was amplified by 25 PCR cycles using specific primers for *AtmBAC2* (5'-GGACAAGAAAACCTCAGGACCAT, 5'-GAATAGACACCGCAAGGCTACCT). As a control, a 377 bp cDNA fragment of the constitutively expressed actin 2 gene (*AtACT2*) was simultaneously amplified by 20 PCR cycles [40]. Identity of the amplicons was confirmed by sequencing.

Promoter-GUS fusion

For promoter-GUS fusions two different lengths (2020 and 1480 bp) of the *AtmBAC2* promoter region including the start codon were amplified by PCR on *Arabidopsis thaliana* Heynh., ecotype Col0 genomic DNA using the primers 5'-CTGACCTCTAGACCAGCTGGTGACAGCATCAG; 5'-CTGACCTCTAGAAAACCTGGGTTTGAACAGCC and 5'-CTGACCACCCGGGACCATACCAAGGATGGGATTG-TAC. Forward primers contained a *Xba*I restriction site, the reverse primer a *Sma*I site. The PCR product was restricted with *Sma*I and *Xba*I and ligated in frame to the GUS gene in binary vector pCB308 [41]. *Agrobacterium tumefaciens* GV2260 was transformed with the resulting plasmids. *Arabidopsis thaliana* L. Heynh., ecotype Col0, grown in soil in the greenhouse, was transformed by floral dipping [42]. Transgenic *Arabidopsis* plants were selected for BAS-TA resistance (Aventis Crop Science, Frankfurt).

Histochemical analysis of GUS activity

Transformed T2 *Arabidopsis* plants were grown in soil. At different developmental stages, plants or organs were harvested and stained for GUS activity. Seedlings were grown on solid MS plates. Histochemical assays for β -glucuronidase activity in transgenic plants were performed as described in Martin *et al.* [43]. Tissues were incubated for ~18 h at 37°C in staining solution containing (mM) 100 sodium phosphate (pH 7), 10 EDTA, 3 $\text{K}_4[\text{Fe}(\text{CN})_6]$, 0.5 $\text{K}_3[\text{Fe}(\text{CN})_6]$, 1 5-bromo-4-chloro-3-indolyl- β -D-glucuronic acid (X-Gluc) and 0.2% (v/v) Triton X-100. Slight vacuum was applied to facilitate substrate infiltration. Chlorophyll containing tissues was cleared in 70% EtOH. Photographs were taken on a CCD camera (Visitron).

Authors' contributions

EC, MD, RK, AS, and MH carried out the molecular cloning and the promoter GUS study. DW performed the phylogenetic analysis. KS and RK participated in the design of the study. WBF and UIF conceived of the study, and participated in its design and coordination. All authors read and approved the final manuscript.

Acknowledgments

We would like to thank Rainer Schwacke, Köln, for help with identifying MCF proteins. This work was supported by Bundesministerium für Bildung und Forschung in the framework of "Genomanalyse im biologischen System Pflanze – GABI" and by KWS AG and Südzucker AG.

References

1. Diebold R, Schuster J, Daschner K and Binder S **The branched-chain amino acid transaminase gene family in *Arabidopsis* encodes plastid and mitochondrial proteins.** *Plant Physiol* 2002, **129**:540-550
2. Goldraij A and Polacco JC **Arginase is inoperative in developing soybean embryos.** *Plant Physiol* 1999, **119**:297-304
3. Goldraij A and Polacco JC **Arginine degradation by arginase in mitochondria of soybean seedling cotyledons.** *Planta* 2000, **210**:652-658
4. Shargool PD, Jain JC and McKay G **Ornithine biosynthesis and arginine biosynthesis and degradation in plant cells.** *Phytochem* 1988, **27**:1571-1574
5. Gamble JG and Lehninger AL **Transport of ornithine and citrulline across the mitochondrial membrane.** *J Biol Chem* 1973, **248**:610-618
6. Belenkiy R, Haelele A, Eisen MB and Wohlrab H **The yeast mitochondrial transport proteins: new sequences and consensus residues, lack of direct relation between consensus residues and transmembrane helices, expression patterns of the transport protein genes, and protein-protein interactions with other proteins.** *Biochim Biophys Acta* 2000, **1467**:207-218
7. Palmieri F **Mitochondrial carrier proteins.** *FEBS Lett* 1994, **346**:48-54
8. Klingenberg M **Mitochondria metabolite transport.** *FEBS Lett* 1970, **6**:145-154
9. Klingenberg M **Overview of mitochondrial metabolite transport systems.** *Methods Enzymol* 1979, **56**:245-252
10. Fiermonte G, Walker JE and Palmieri F **Abundant bacterial expression and reconstitution of an intrinsic membrane-transport protein from bovine mitochondria.** *Biochem J* 1993, **294**:293-299
11. Laloi M **Plant mitochondrial carriers: an overview.** *Cell Mol Life Sci* 1999, **56**:918-944
12. Palmieri L, Runswick MJ, Fiermonte G, Walker JE and Palmieri F **Yeast mitochondrial carriers: bacterial expression, biochemical identification and metabolic significance.** *J Bioenerg Biomembr* 2000, **32**:67-77
13. Porter RK **Mammalian mitochondrial inner membrane cationic and neutral amino acid carriers.** *Biochim Biophys Acta* 2000, **1459**:356-362
14. Fiermonte G, Palmieri L, Todisco S, Agrimi G, Palmieri F and Walker JE **Identification of the mitochondrial glutamate transporter. Bacterial expression, reconstitution, functional characterization, and tissue distribution of two human isoforms.** *J Biol Chem* 2002, **277**:19289-19294
15. Emmermann M, Braun HP and Schmitz UK **The ADP/ATP translocator from potato has a long amino-terminal extension.** *Curr Genet* 1991, **20**:405-410
16. Winning BM, Sarah CJ, Purdue PE, Day CD and Leaver CJ **The adenine nucleotide translocator of higher plants is synthesized as a large precursor that is processed upon import into mitochondria.** *Plant J* 1992, **2**:763-773
17. Vercesi AE **The discovery of an uncoupling mitochondrial protein in plants.** *Biosci Rep* 2001, **21**:195-200
18. Laloi M, Klein M, Riesmeier JW, Müller-Röber B, Fleury C, Bouillaud F and Ricquier D **A plant cold-induced uncoupling protein.** *Nature* 1997, **389**:135-136
19. Picault N, Palmieri L, Pisano I, Hodges M and Palmieri F **Identification of a novel transporter for dicarboxylates and tricarboxylates in plant mitochondria. Bacterial expression, reconstitution, functional characterization, and tissue distribution.** *J Biol Chem* 2002, **277**:24204-24211
20. Catoni E, Desimone M, Schumacher K, Hilpert M, Schneider A, Kunze R, Flügge UI and Frommer WB **Identification of an *Arabidopsis* mitochondrial succinate-fumarate translocator.** *FEBS Lett* 2003, **534**:87-92
21. Deuschle K, Funck D, Hellmann H, Däschner K, Binder S and Frommer WB **A nuclear gene encoding mitochondrial Δ^1 -pyrro-**

- line-5-carboxylate dehydrogenase and its potential role in protection from proline toxicity.** *Plant J* 2001, **27**:345-355
22. Breitzkreuz KE and Shelp BJ **Subcellular compartmentation of the 4-aminobutyrate shunt in protoplasts from developing soybean cotyledons.** *Plant Physiol* 1995, **108**:99-103
 23. Delforge J, Messenguy F and Wiame JM **The regulation of arginine biosynthesis in *Saccharomyces cerevisiae*. The specificity of argR⁻ mutations and the general control of amino-acid biosynthesis.** *Eur J Biochem* 1975, **57**:231-239
 24. Crabeel M, Soetens O, De Rijcke M, Pratiwi R and Pankiewicz R **The ARG11 gene of *Saccharomyces cerevisiae* encodes a mitochondrial integral membrane protein required for arginine biosynthesis.** *J Biol Chem* 1996, **271**:25011-25018
 25. Palmieri L, De Marco V, Iacobazzi V, Palmieri F, Runswick MJ and Walker JE **Identification of the yeast ARG-11 gene as a mitochondrial ornithine carrier involved in arginine biosynthesis.** *FEBS Lett* 1997, **410**:447-451
 26. Soetens O, Crabeel M, El Moualij B, Duyckaerts C and Sluse F **Transport of arginine and ornithine into isolated mitochondria of *Saccharomyces cerevisiae*.** *Eur J Biochem* 1998, **258**:702-709
 27. Camacho JA, Obie C, Biery B, Goodman BK, Hu CA, Almashanu S, Steel G, Casey R, Lambert M and Mitchell GA **Hyperornithinaemia-hyperammonaemia-homocitrullinuria syndrome is caused by mutations in a gene encoding a mitochondrial ornithine transporter.** *Nat Genet* 1999, **22**:151-158
 28. Kobayashi K, Sinasac DS, Iijima M, Boright AP, Begum L, Lee JR, Yasuda T, Ikeda S, Hirano R and Terazono H **The gene mutated in adult-onset type II citrullinaemia encodes a putative mitochondrial carrier protein.** *Nat Genet* 1999, **22**:159-163
 29. Palmieri L, Pardo B, Lasorsa FM, del Arco A, Kobayashi K, Iijima M, Runswick MJ, Walker JE, Saheki T and Satrustegui J **Citrin and aralar1 are Ca²⁺-stimulated aspartate/glutamate transporters in mitochondria.** *EMBO J* 2001, **20**:5060-5069
 30. Hoyos ME, Palmieri L, Wertin T, Arrigoni R, Polacco JC and Palmieri F **Identification of a mitochondrial transporter for basic amino acids in *Arabidopsis thaliana* by functional reconstitution into liposomes and by complementation in yeast.** *Plant J* 2003, **37**:11-19
 31. Minet M, Dufour ME and Lacroute F **Complementation of *Saccharomyces cerevisiae* auxotrophic mutants by *Arabidopsis thaliana* cDNAs.** *Plant J* 1992, **2**:417-422
 32. Schwacke R, Schneider A, van der Graaff E, Fischer K, Catoni E, Desimone M, Frommer WB, Flüggé U-I and Kunze R **Aramemnon, a novel database for *Arabidopsis* integral membrane proteins.** *Plant Physiol* 2003, **131**:16-26
 33. Kaplan RS **Structure and function of mitochondrial anion transport proteins.** *J Memb Biol* 2001, **179**:165-183
 34. Palmieri F, Indiveri C, Bisaccia F and Iacobazzi V **Mitochondrial metabolite carrier proteins: purification, reconstitution, and transport studies.** *Methods Enzymol* 1995, **260**:349-369
 35. Indiveri C, Iacobazzi V, Giangregorio N and Palmieri F **The mitochondrial carnitine carrier protein: cDNA cloning, primary structure and comparison with other mitochondrial transport proteins.** *Biochem J* 1997, **321**:713-719
 36. Schwacke R, Grallath S, Breitzkreuz KE, Stransky E, Stransky H, Frommer WB and Rentsch D **LeProT1, a transporter for proline, glycine betaine, and gamma-amino butyric acid in tomato pollen.** *Plant Cell* 1999, **11**:377-391
 37. Wipf D, Ludewig U, Tegeder M, Rentsch D, Koch W and Frommer WB **Conservation of amino acid transporters in fungi, plants and animals.** *Trends Biochem Sci* 2002, **27**:139-147
 38. Rentsch D, Laloi M, Rouhara I, Schmelzer E, Delrot S and Frommer WB **NTR1 encodes a high affinity oligopeptide transporter in *Arabidopsis*.** *FEBS Lett* 1995, **370**:264-268
 39. Gietz D, St Jean A, Woods RA and Schiestl RH **Improved method for high efficiency transformation of intact yeast cells.** *Nucl Acids Res* 1992, **20**:1425
 40. An YQ, McDowell JM, Huang S, McKinney EC, Chambliss S and Meagher RB **Strong, constitutive expression of the *Arabidopsis* ACT2/ACT8 actin subclass in vegetative tissues.** *Plant J* 1996, **10**:107-121
 41. Xiang C, Han P, Lutziger I, Wang K and Oliver DJ **A mini binary vector series for plant transformation.** *Plant Mol Biol* 1999, **40**:711-717
 42. Clough SJ and Bent AF **Floral dip: a simplified method for Agrobacterium-mediated transformation of *Arabidopsis thaliana*.** *Plant J* 1998, **16**:735-743
 43. Martin T, Wöhner RV, Hummel S, Willmitzer L and Frommer WB **The GUS reporter system as a tool to study plant gene expression.** In: *GUS protocols: using the GUS gene as a reporter of gene expression* (Edited by: Gallagher SR) San Diego: Academic press 1992, 23-43

Publish with **BioMed Central** and every scientist can read your work free of charge

"BioMed Central will be the most significant development for disseminating the results of biomedical research in our lifetime."

Sir Paul Nurse, Cancer Research UK

Your research papers will be:

- available free of charge to the entire biomedical community
- peer reviewed and published immediately upon acceptance
- cited in PubMed and archived on PubMed Central
- yours — you keep the copyright

Submit your manuscript here:
http://www.biomedcentral.com/info/publishing_adv.asp

